



Industrial filtration

Precision gas control

Advanced membrane technology
enabling ultra-pure water and
extra-bubbly beverages

Advanced membrane technology for dissolved gas control

Gas transfer membrane technology that removes or adds dissolved gases in liquids can help improve operating efficiency in high purity water treatment applications. Help reduce corrosion in industrial facilities. And even add the right amount of “fizz” to your favorite beverage.

Thermo Scientific™ Liqui-Cel™ Membrane Contactors

Liqui-Cel membrane contactors provide precision dissolved gas control for a wide variety of industries — from microelectronics, oil production and power plants to pharmaceutical, food and beverage industries. These leading gas transfer devices help facilities around the world improve water treatment process performance and product quality by:

- Reducing corrosion in boilers and piping
- Improving process efficiency
- Enabling ultra-pure water for high-technology processes
- Improving beverage shelf life and taste

Capable of both adding and removing dissolved gases, Liqui-Cel membrane contactors are commonly used for carbon dioxide removal, deoxygenation, nitrogenation and carbonation. Highly compact and efficient, they use microporous membranes with nearly 10x the gas exchange surface area per unit volume of conventional deaeration towers. The modular nature of Liqui-Cel membrane contactors makes it easy to incorporate them into skidded systems, helping to lower installation costs. Even after initial installation, Liqui-Cel membrane contactor systems can be readily expanded to meet growing capacity.



A high level of consistency and control

The presence of dissolved gases in a liquid can mean the difference between high quality and headaches. The same gases that give beverages their distinctive flavor and fizz can corrode boiler equipment or cause defects in microelectronics.

For over 20 years, Thermo Fisher Scientific's advanced gas transfer membrane technology has been used to precisely control dissolved gases in many applications.

Degassing and debubbling

Dissolved gases such as oxygen and carbon dioxide can cause any number of difficulties in industrial processes. They can oxidize and corrode metal piping and critical equipment, resulting in extra costs and downtime for maintenance. In industries such as pharmaceutical or semiconductor manufacturing — which depend on ultra-pure, de-aerated water — dissolved gases can affect both production efficiency and product quality.

Air bubbles in liquid can lead to process interruptions and surface defects, such as in ink and coating applications. Bubbles can also negatively impact measurement reliability in laboratory analysis.

Liqui-Cel membrane contactors achieve low levels of dissolved gas concentration (<1 ppm CO₂ and <1 ppb O₂) that can be difficult to reach with conventional gas removal processes. Liqui-Cel membrane contactors have a smaller footprint and typically weigh less than vacuum towers and forced draft deaerators. In addition, Liqui-Cel membrane contactors help achieve an effective alternative to chemical treatment.

Adding dissolved gas for fizz, foam and flavor

The food and beverage industry adjusts nitrogen and CO₂ levels to give many of our favorite drinks the sparkle, taste, and texture that we love.

Using Liqui-Cel membrane contactors to add dissolved gases enables beverage producers and bottlers to conveniently help protect product quality and process with a compact device.

Liqui-Cel membrane contactors diffuse gases into water at the microscopic level, giving industries precise control of nitrogen and CO₂ levels while limiting gas waste. Liqui-Cel membrane contactors can also remove oxygen while adding nitrogen and CO₂, eliminating a big step — along with time and expenses — from large-scale beverage production.

There are also many other applications where Liqui-Cel membrane contactor technology could be applied, such as ammonia removal, alcohol adjustment, VOC reduction and H₂S removal. To learn more about these applications, contact your Thermo Fisher representative.

A leader in membrane technology

Thermo Fisher is dedicated to the continued development and advancement of membrane technology. We also offer our technical expertise to support our customers from initial system design through module start-up and optimization.

Applications

- Deoxygenation
- Decarbonation
- Carbonation
- Nitrogenation
- Hydrogenation
- Ammonia removal and recovery



Gas transfer technology that puts you in control

Applications for Liqui-Cel membrane contactors



Beverage industry

Liqui-Cel membrane contactors provide in-line carbonation, nitrogenation and removal of O_2 . This membrane-based technology improves efficiency over conventional deoxygenation technologies while extending the shelf life of beer, wine, soft drinks, and many other beverages. When adding gases, Liqui-Cel membrane contactors use carbon dioxide or nitrogen gases more efficiently compared to traditional systems. They enable rapid diffusion of gases into liquids to precise levels, saving time and simplifying the production process.



Laboratory water and analytical instrumentation

Dissolved gases can interfere with instrument readings and could alter the composition of solutions for analysis. With Thermo Scientific™ Liqui-Cel™ MM Membrane Contactors, laboratory water can be effectively degassed, improving measurement reliability and overall lab efficiency. The ultra-small footprint also makes Liqui-Cel MM membrane contactors easy to integrate into analytical devices or into laboratory water supply systems.



Oil and gas production

Liqui-Cel membrane contactors degas boiler feedwater and reduce dissolved oxygen levels in water used for injection at extraction sites. As a small-footprint, modular technology, Liqui-Cel membrane contactors are also easy to install and integrate into existing systems. They can also be easily expanded as system needs grow.



Pharmaceutical manufacturing

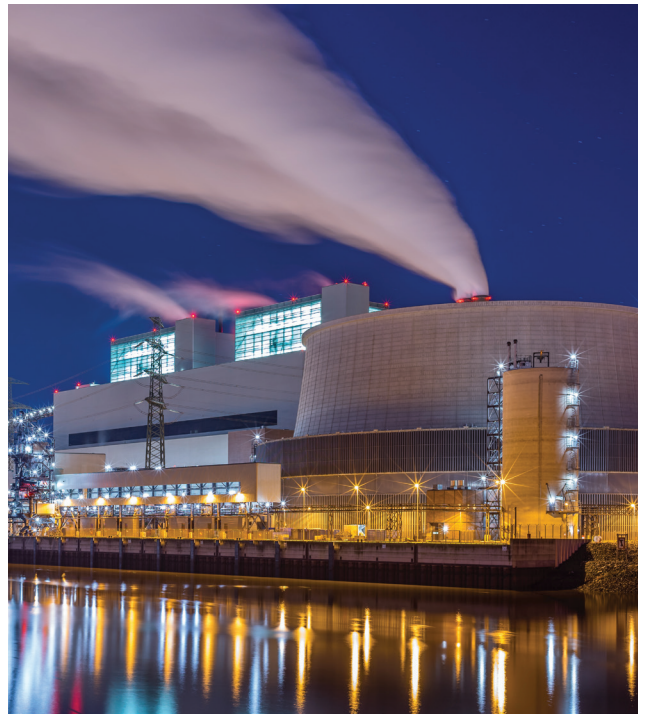
The pharmaceutical industry relies on low CO_2 levels in process water to control water conductivity and pH. Liqui-Cel membrane contactors reduce CO_2 to maximize the efficiency of the electrodeionization process. They also remove dissolved O_2 to reduce the risk of oxidation and spoilage in final products without using chemicals while saving space, time, and money. Liqui-Cel membrane contactors can also remove non-condensable gases without applying heat to help pharmaceutical plants meet standards for pure steam generation.

Power and steam generation

Liqui-Cel membrane contactors remove dissolved O_2 and CO_2 from make-up water without using chemicals. This reduces risk of corrosion and pitting caused by oxidation and carbonic acid. By decreasing long-term damage to pipes, fittings, and boiler surfaces, Liqui-Cel technology helps power plants reduce the high costs of capital equipment maintenance and replacement. Reduced chemical use may also decrease the boiler blowdown frequency, saving on water and energy loss.

Lowering dissolved CO_2 levels with Liqui-Cel membrane contactors reduces the total ionic load in water, enhancing the effectiveness of ion exchange purification technologies. With more efficient deionization, power plants can reduce costly bed regeneration cycles and increase the service life of deionization equipment.

The small physical and energy footprint of Liqui-Cel membrane contactors, along with savings from reduced chemical use and longer capital equipment lifespans, help make them a highly valuable solution for removing dissolved gases.



Printing, inks and coatings

Liqui-Cel membrane contactors are widely used to remove dissolved gases from inks and coatings so that production lines operate efficiently and printheads eject ink smoothly and precisely. They offer a simple, in-line solution to keep printers and lines running at optimal quality and speeds. We offer a wide variety of sizes suitable for many different ink and coating applications. Liqui-Cel membrane contactors can also degassify a wide range of low surface tension fluids that are used in the electronics and quality testing industries.



Semiconductor and microelectronics

Because of their precision, efficiency, and simplicity, Liqui-Cel membrane contactors are commonly used in ultra-pure water treatment for semiconductor processing, flat panel display manufacturing and other high-technology industries. The contactors remove CO_2 and O_2 in water to the extremely low levels required in today's plants. Low O_2 levels protect product, and low CO_2 levels help maximize the efficiency of water electrodeionization and ion exchange processes. Liqui-Cel membrane contactors also allows for precision control of the dissolved gases in rinse UPW and wafer processing chemicals.



Inside the technology

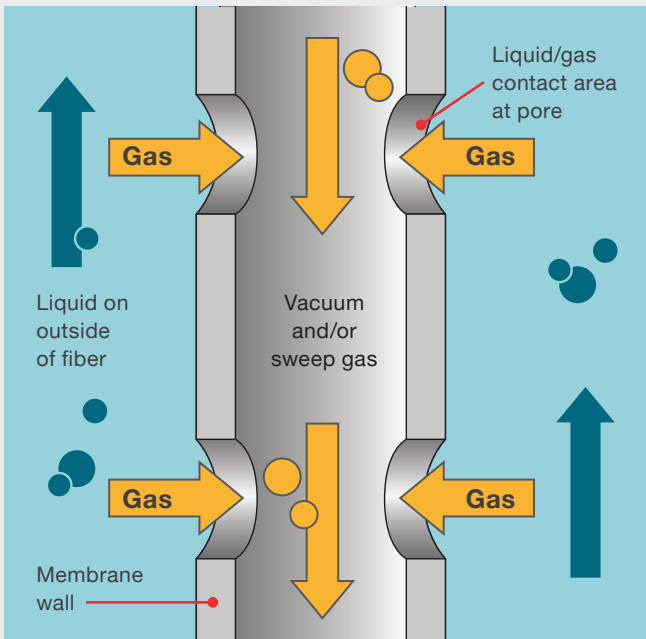
Liqui-Cel membrane contactors are microporous hollow fiber membranes that are knitted into an array and wrapped around a center tube inside a contactor housing.

During operation, liquid flows around the outside of the hollow fiber membrane while a vacuum or sweep gas is applied to the inside of the fiber.

Applying a vacuum or sweep gas creates a difference in the gas concentration levels between the inside (lumen side) and outside (shell side) of the hydrophobic membrane. This concentration difference drives rapid and efficient dissolved gas transfer to and from liquid streams.

Features and benefits

- Modular design offers flexibility for meeting future increase in capacity or tighter specification requirements
- High inlet pressure and low pressure drop reduces the need for repressurization pumps
- Large membrane surface area delivers high gas transfer performance and efficiency
- Membrane-based technology reduces or eliminates chemical use
- Fast equilibrium allows for quick start-up
- Different contactor sizes and material options provide tremendous flexibility with installation and capacity
- Operation over a wide range of flow rates
- Low operating costs
- Simple operation reduces instrumentation and maintenance requirements

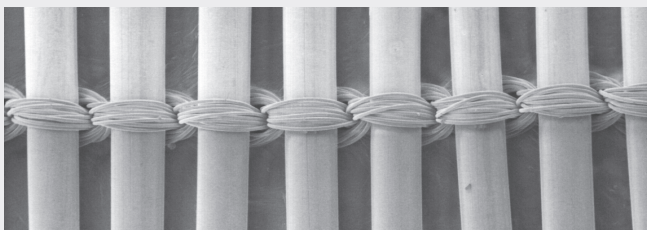


Fiber types

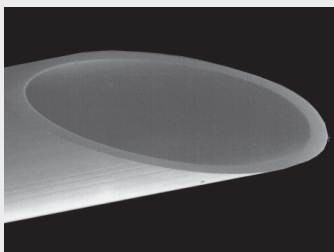
We offer two primary fiber types for specific gas transfer applications:

Polypropylene: Primarily used for gas transfer to and from water streams

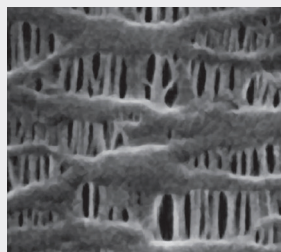
Polyolefin: Used to remove gases from low surface tension liquids (<40 dynes/cm)



Hollow fiber membrane array



Microporous hydrophobic hollow fiber membrane



Hydrophobic membrane with pores

Contactors configurations

Liqui-Cel membrane contactors come in different configurations, each of which helps maximize efficiency and performance in compact designs. An animated product tour is available online at thermofisher.com/industrialfiltration.

Thermo Scientific™ Liqui-cel™ EXF Membrane Contactor

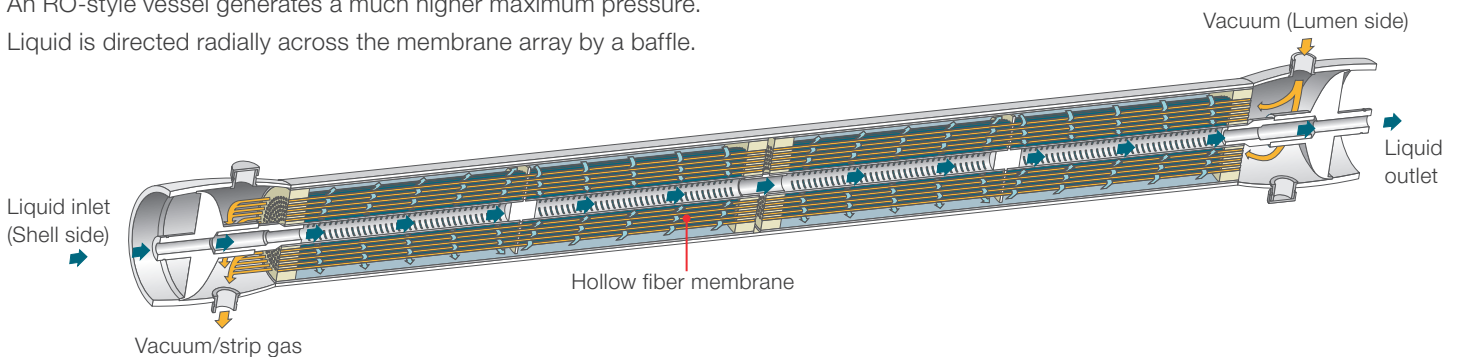
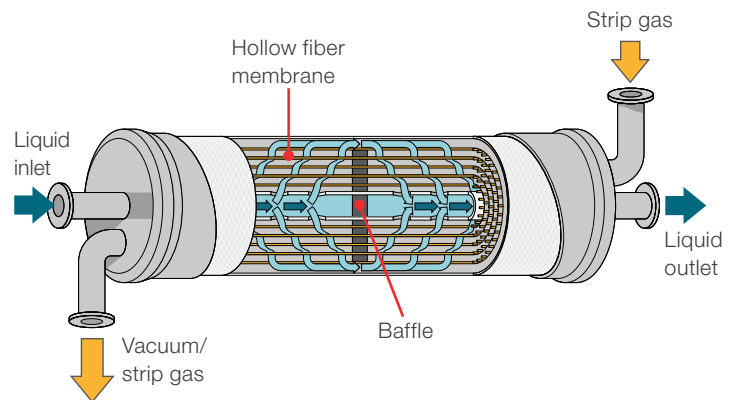
Includes contactor designs with a center baffle to improve contactor degassing efficiency by maximizing contact with the membrane surface area.

Extra-flow

Liquid flows around the outside (shell side) of the hollow fibers. A baffle in the middle of the contactor directs liquid radially across the membrane array. A strip gas and/or vacuum is applied on the inside (lumen side) of the hollow fibers.

Extra-flow in high pressure vessel

An RO-style vessel generates a much higher maximum pressure. Liquid is directed radially across the membrane array by a baffle.

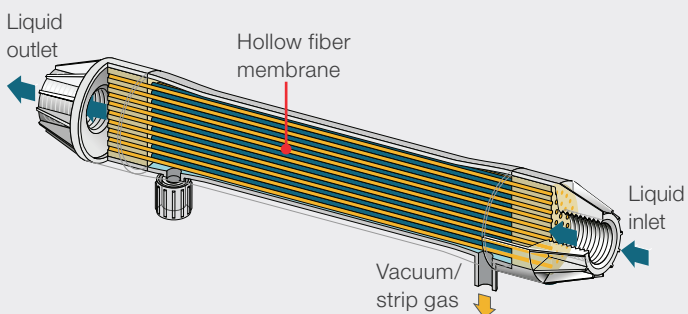


Thermo Scientific™ Liqui-Cel™ MM Membrane Contactor

Includes transverse flow and parallel flow designs. No baffle is used.

Parallel flow

The liquid and gas sides of the membrane are reversed: liquid flows through the inside (lumen side) of the hollow fiber while a vacuum or a strip gas is applied on the outside (shell side) of the fibers.

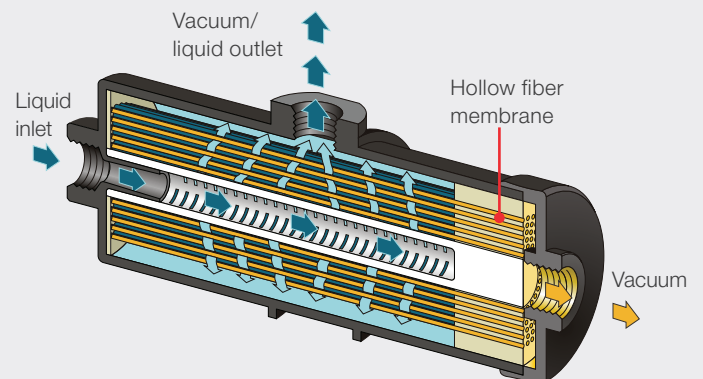


Thermo Scientific™ Liqui-Cel™ SP Membrane Contactor

Includes extra flow and radial contactor designs with only polyolefin fiber.

Radial flow

A plugged center tube on one side of the device forces liquid radially over the hollow fibers. Primarily used for degassing low surface tension fluids.

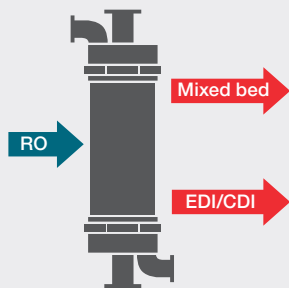


Common installation scenarios

In many industrial applications, Liqui-Cel membrane contactors have become the standard product for gas transfer to improve yields, reduce corrosion and increase water treatment process efficiency.

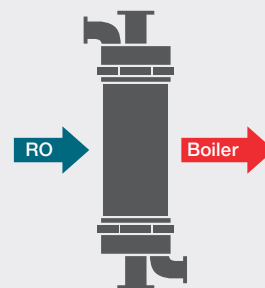
High purity

Removing CO₂ after the RO and before mixed bed or EDI/CDI reduces chemical usage and allows optimization of the EDI/CDI units. Lower CO₂ levels before EDI may also improve EDI outlet water quality and the efficiency of silica and boron removal.



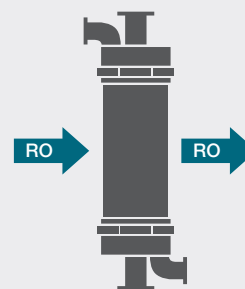
Chemical-free boiler feedwater degassing

Removing CO₂ and O₂ from boiler feedwater helps protect boilers and piping from corrosion with little or no chemical use.



Double pass RO

Removing CO₂ between a double pass RO system helps reduce or eliminates chemical usage and associated dosing equipment and minimizes scaling of the RO membranes.



Application engineering

The cornerstone for Thermo Fisher Scientific's philosophy is service to customers, not only in product quality and prompt delivery, but also in validation, application support, and the sharing of scientific information.

By using Thermo Scientific products, customers have access to Thermo Fisher Application Engineering support, a global team of market-focused scientists and engineers who excel in supporting collaborative efforts between customers and us.

Our Application Engineers can work with you from start to finish to suggest the most effective and economical filters to achieve the clearest results.

Intended Use: Liqui-Cel membrane contactors are intended to remove dissolved gases and bubbles from liquids or to add gases to a liquid stream. Liqui-Cel products are for use in industrial separation applications of industrial fluids only, in accordance with the applicable product instructions, specifications, and where materials of construction are compatible. Liqui-Cel membrane contactors may further be used in the production of water for various pharmaceutical products upstream of the final water sterilization step. Certain Liqui-Cel products are compliant for use in Food and Beverage applications. For specific details regarding use or limitations for food contact applications please refer to the Liqui-Cel product's data sheet or contact your Thermo Fisher Scientific Inc. representative for more information.

Since there are many factors that can affect a product's use, the customer and user remain responsible for determining whether the Thermo Scientific product is suitable and appropriate for the user's specific application, including user conducting an appropriate risk assessment and evaluating the Thermo Scientific product in user's application.

Restrictions on Use: Thermo Fisher Scientific Inc. advises against the use of these Thermo Scientific products in any application other than the stated intended use(s) since other applications have not been evaluated by Thermo Fisher and may result in an unsafe or unintended condition. Do not use in any manner whereby the Thermo Scientific product, or any extractable or leachable from the Thermo Scientific product, may become part of or remain in a medical device, drug, cosmetic, supplement, infant formula; or in applications involving life-sustaining medical applications or prolonged contact with internal bodily fluids or tissues.

Technical Information: The technical information, guidance, and other statements contained in this document or otherwise provided by Thermo Fisher are based upon records, tests, or experience that Thermo Fisher believes to be reliable, but the accuracy, completeness, and representative nature of such information is not guaranteed. Such information is intended for people with knowledge and technical skills sufficient to assess and apply their own informed judgment to the information. No license under any Thermo Fisher or third party intellectual property rights is granted or implied with this information.

Product Selection and Use: Many factors beyond Thermo Fisher's control and uniquely within user's knowledge and control can affect the use and performance of a Thermo Scientific product in a particular application. As a result, customer is solely responsible for evaluating the product and determining whether it is appropriate and suitable for customer's application. Failure to properly evaluate, select, and use a Thermo Scientific product and appropriate safety products, or to meet all applicable safety regulations, may result in injury, sickness, death, and/or harm to property.

Learn more at thermofisher.com/industrialfiltration

thermo scientific