

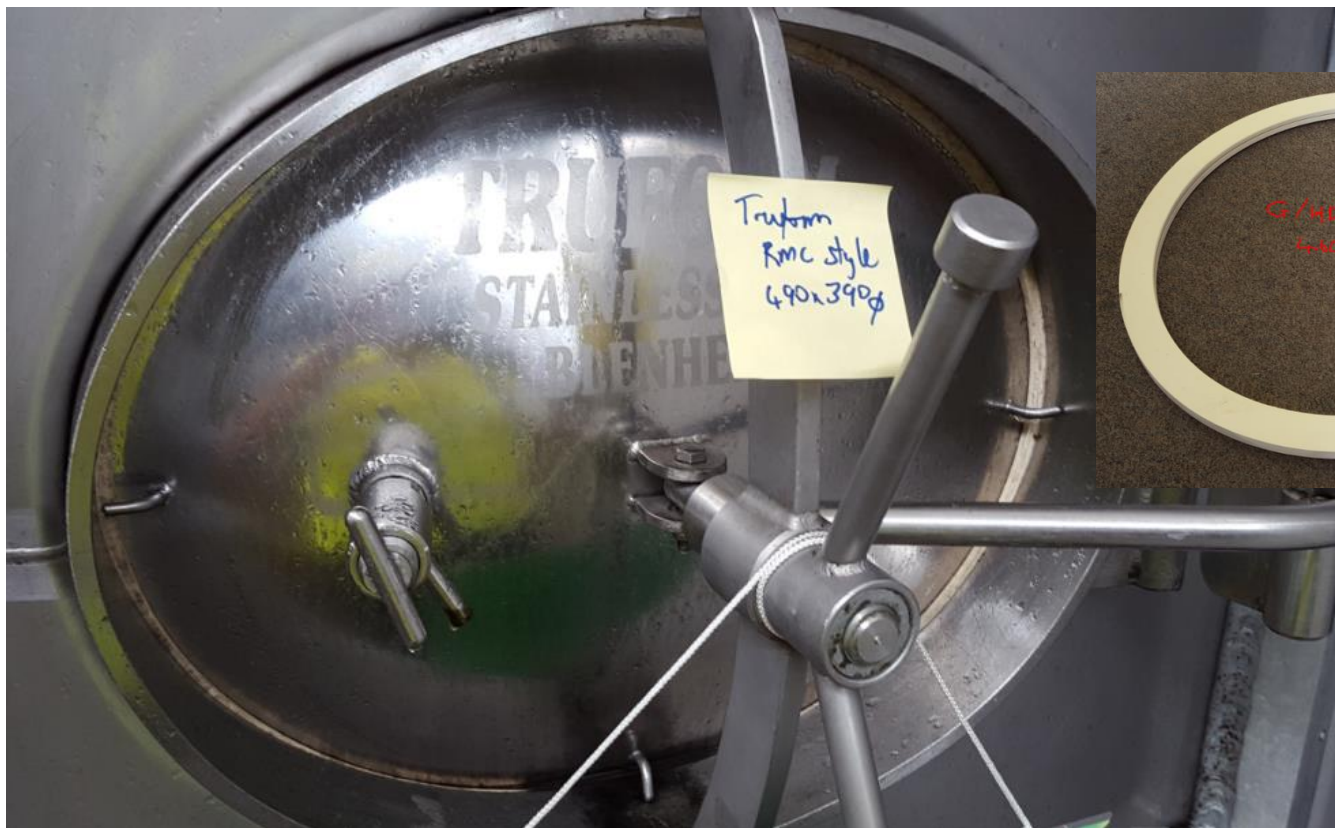
# HD Process - Overview of various manways with relevant gaskets 2016

25kl Truform tanks 490x390 u profile

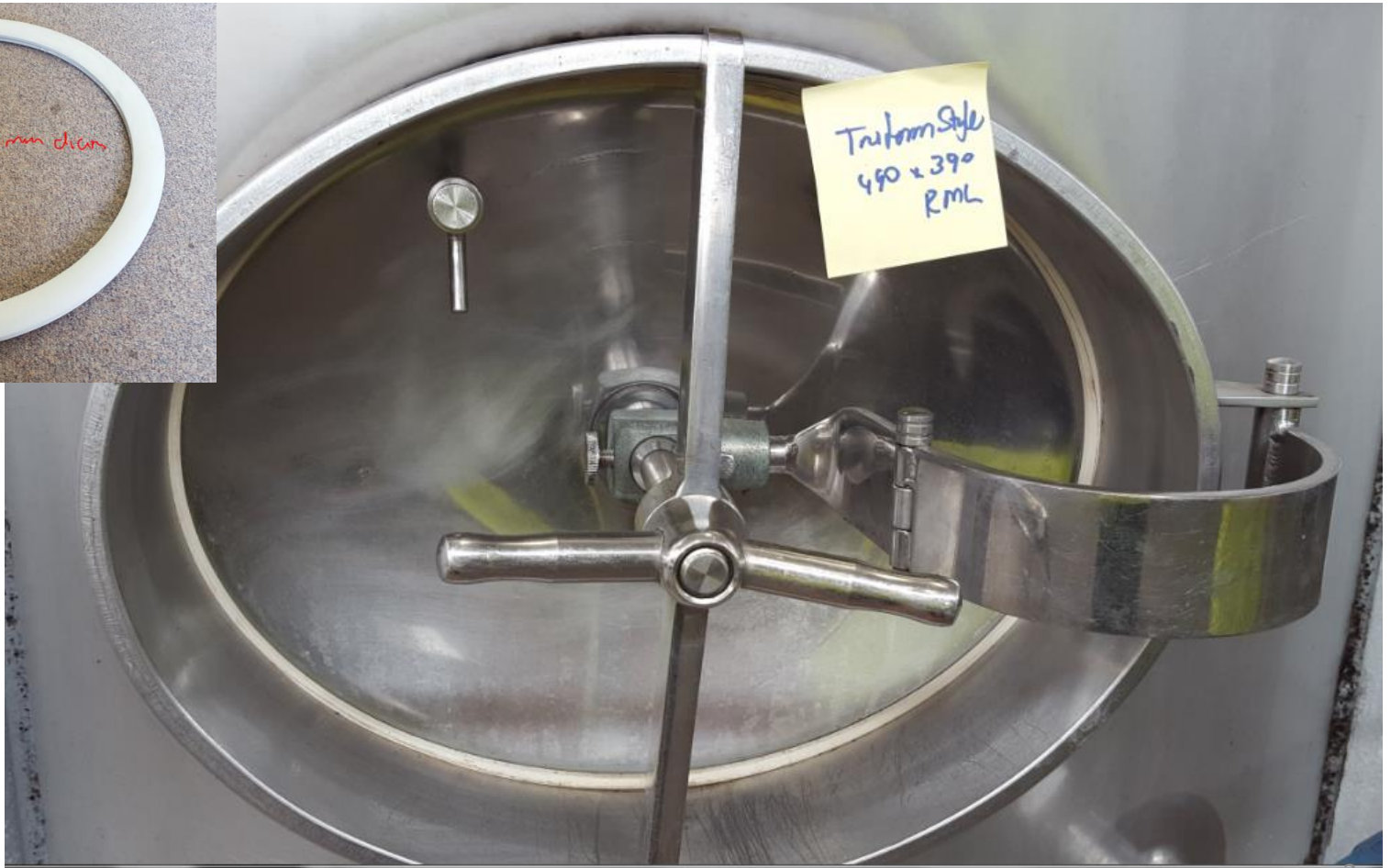
Use HD Process universal

- #G/HD1E

Manway Seal Z176 EPDM 460mm



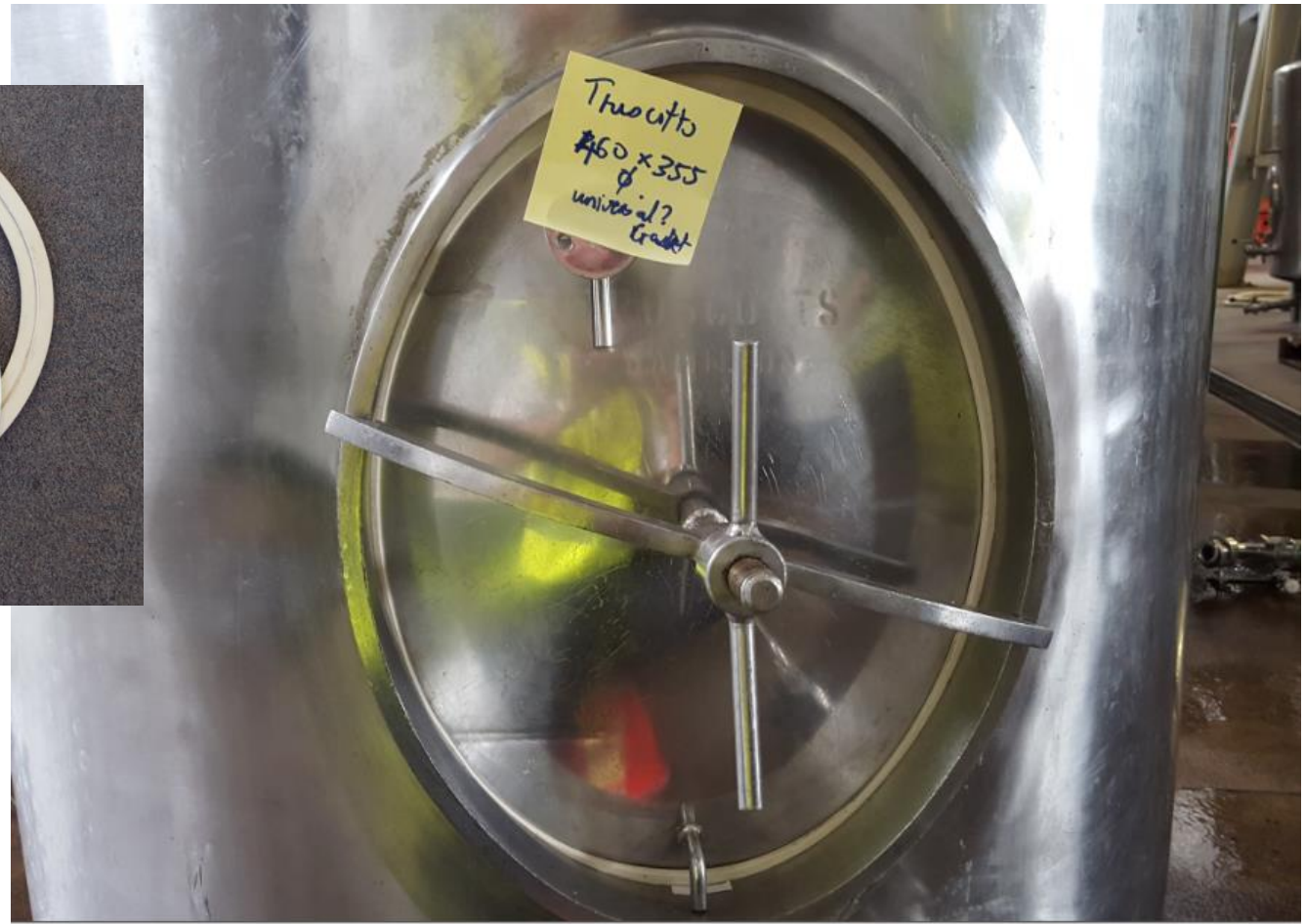
F Tanks Truform style 490x390 u profile  
Have Zorzini manways with  
Use - #G/15-E Old profile seal art.200 EPDM, 400mm diameter



GTs 460x355 u profile

try HD process universal seal – Use - #G/HD2E  
EPDM 400mm

Manway Seal Z188E



K Tanks – Laveggi B2 520x410 D profile  
Use - #GRRE530X41001 EPDM Gasket B2/B6/B8/B11



Ak tank 505x400 U shape on frame - Use RSR300



SOF G 515x 415 truform tank u shape

These are Laveggi A15

Use #GROE520X42001 EPDM Seal A15/A16 Manway



SOF 1 490x395 u shaped on frame  
Manway not recognised – more info on seal type?  
Try #RSR300      NBR Lid Seal 430ID/480 OD



SOF 1 470x580 u shaped  
(only 2 off of this type\_  
Check for seal size – RSR type –  
but larger circumference?



SOF 9 480 x 480 round seal (air filled)



AR00626 510x510 round seal (4-5 tanks)  
-not recognised



ARO2001 420x430 (Steve does not think this is his seal – however looks like RSR style)



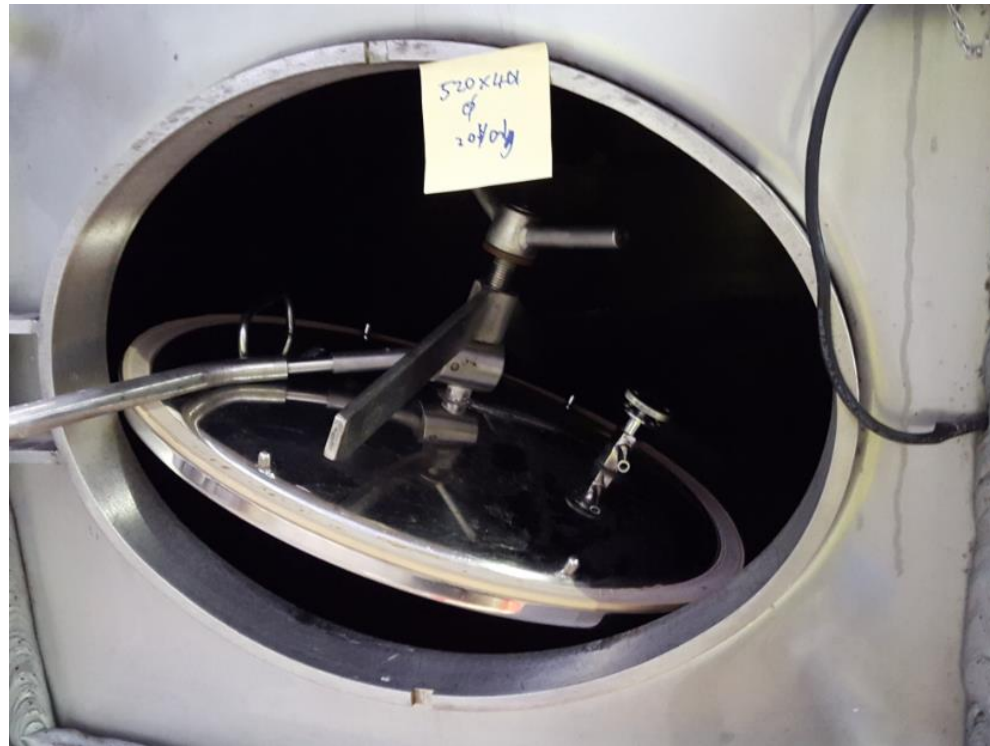
# ARO1502 525 x 425 air filled round seal (25mm) 3 off manways only



SILOA AT9002 500x405 (GK Johns fabricator) U seal on frame (460 diam) 30  
off units TRY SEAL #RSR300 NBR Lid Seal 430ID/480 OD  
(or get and RSR made up to size)



SILO V2 AT14012 520 x 401 (2 off units only) D seal Laveggi A15/ A16  
#GROE520X42001 EPDM Seal A15/A16



AH03602 500x400 air filled 15mm diameter

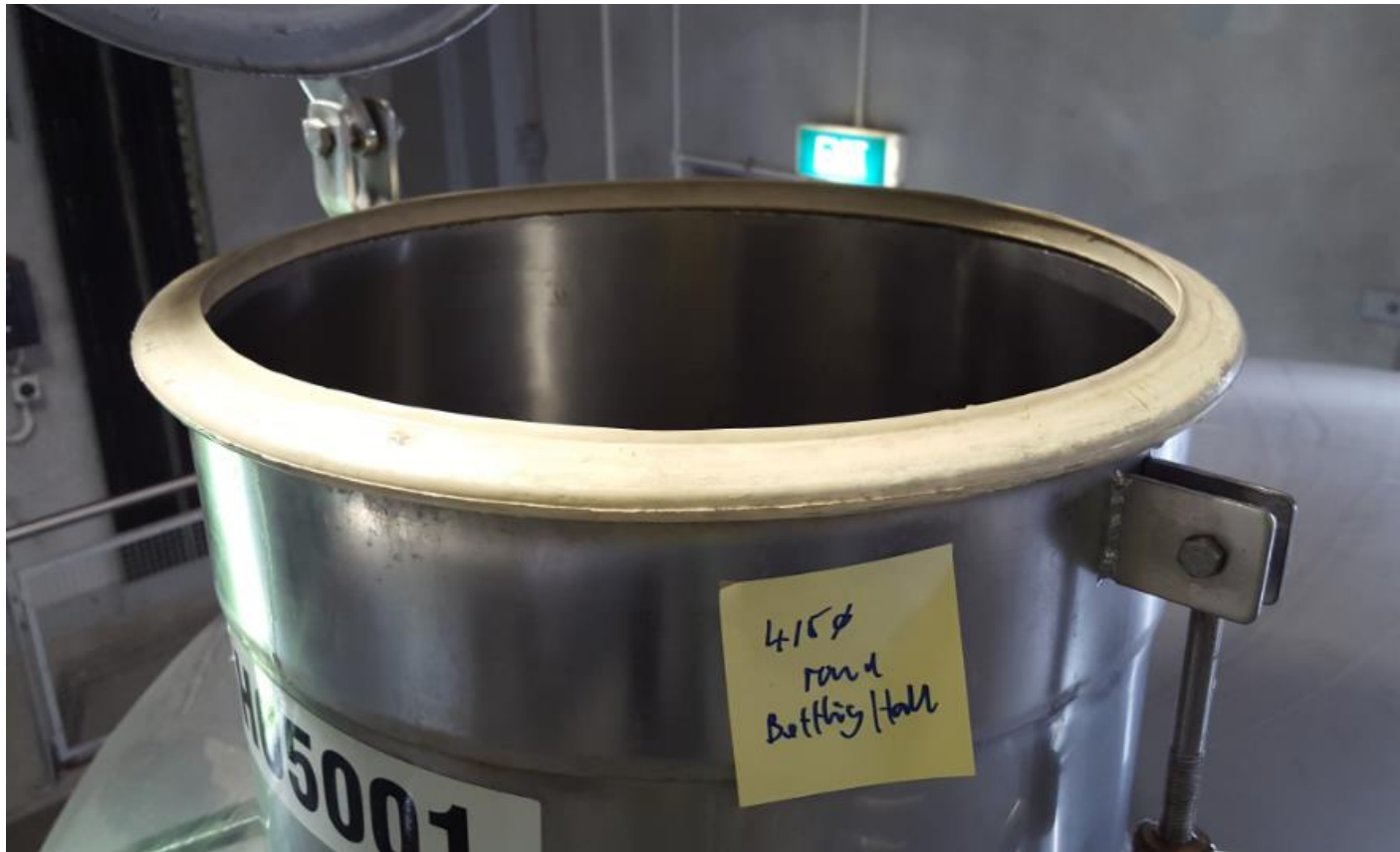


Turret AH05001 415 diameter lipped seal

This is a Laveggi D8 420

#GRCE0420ASE01

Double Lipped Seal EPDM 420mm



LOF Turret 415 diameter lip seal

Laveggi D8-420

#GRCE0420ASE01

Double Lipped Seal EPDM 420mm



Turret 1502 560mm air filled round section 15mm



AR01504 600mm lip sealed  
Laveggi D20 (same seal as D8 and D22) #GRCE0600ASE01      Double lipped  
EPDM 600mm

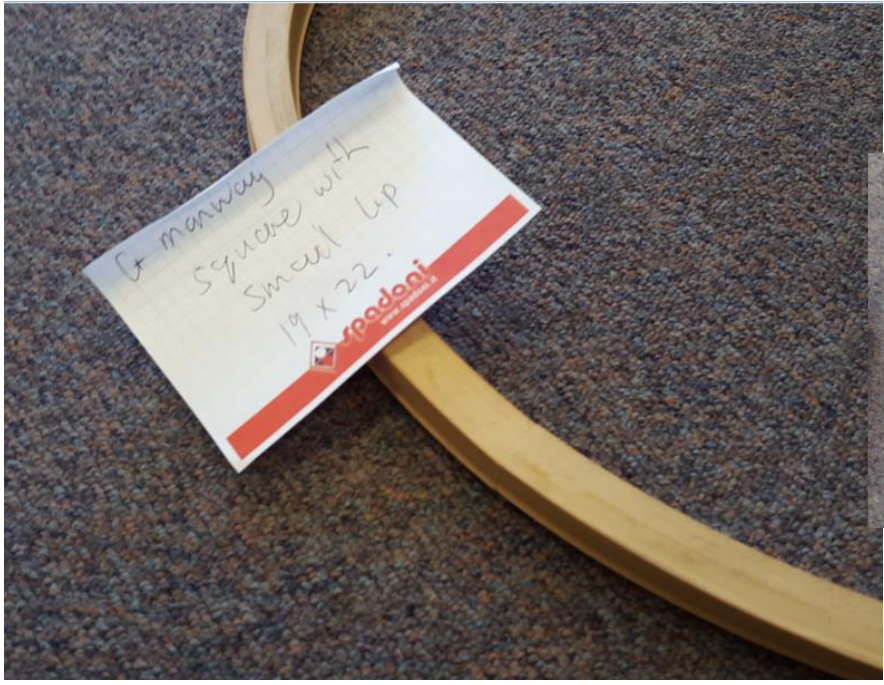


### Laveggi G3 manway seal (guillotine manway type)

use #GRRP400X40001NR Gasket G3 400 x 400mm

Manway Seal 3

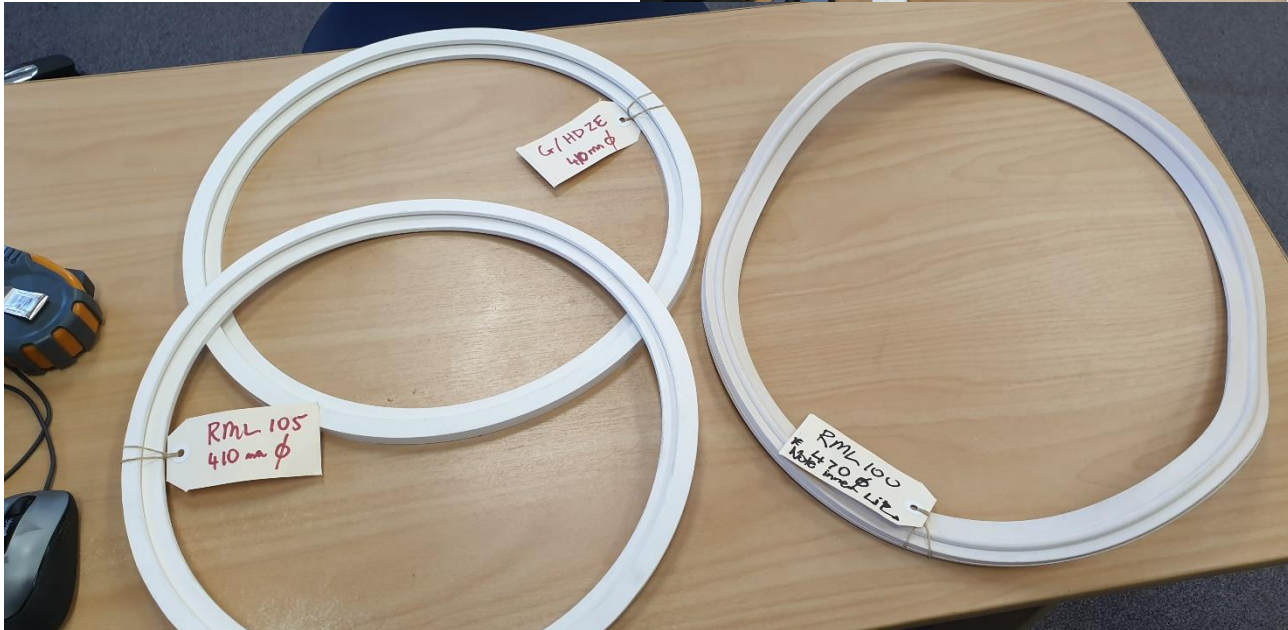
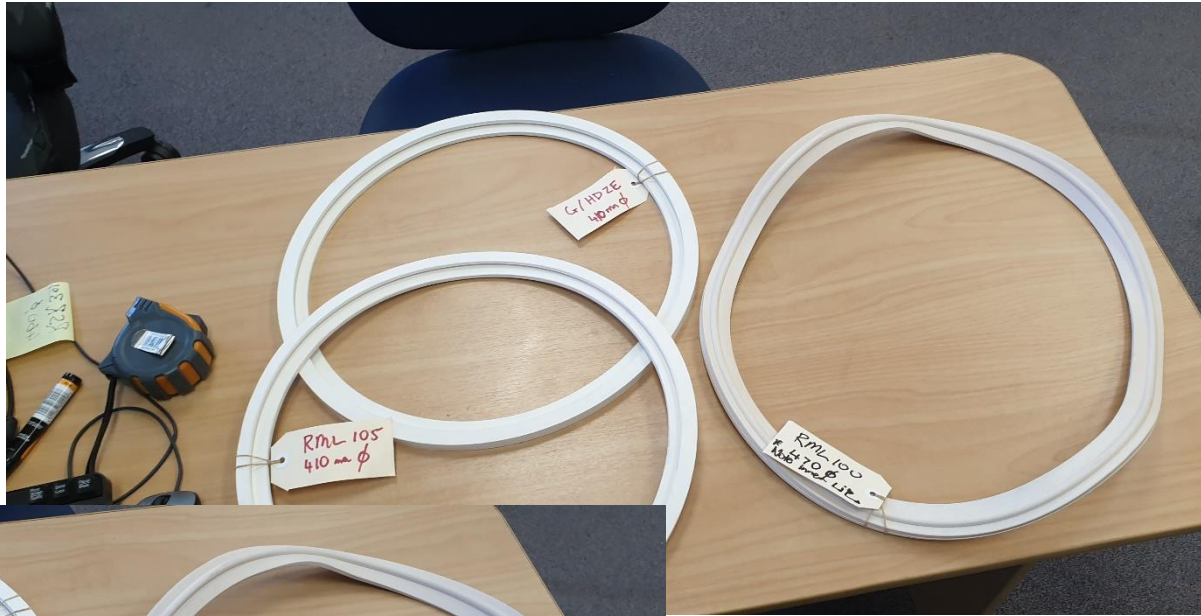
\$43.00



# RSR 301 (same 31mm long profile as 2049) and 2049 gasket photos



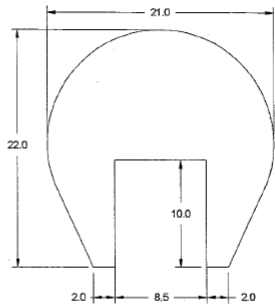
RML 100 (with external lip),  
RML 105 - same profile as G/HD2E



## RSR profile guide

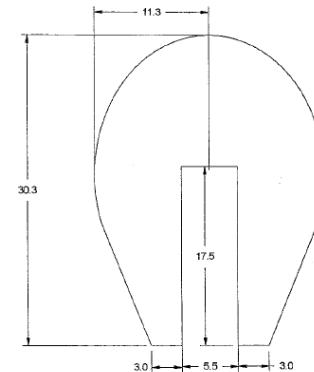
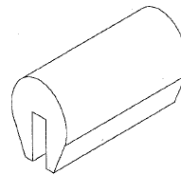
P2048 (std 22mm x 21 mm)  
and P2049 (long 22mm x 30mm)

DRAWING APPROVED Y/N  
NAME: S. ALANSON  
COMPANY: HD Process  
SIGNED: S. Alanson  
DATE: 15/12/2015



COMPOUND: 6758 DRAWN: JHM HD Process P2048  
TYPE: EPDM DATE: 01/12/15

DRAWING APPROVED Y/N  
NAME: S. ALANSON  
COMPANY: HD PROCESS NZ LTD  
SIGNED: S. Alanson  
DATE: 15/12/15



COMPOUND: 6758 DRAWN: JHM HD Process P1049  
TYPE: EPDM DATE: 14/12/15