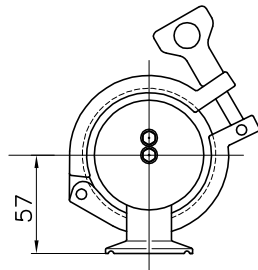
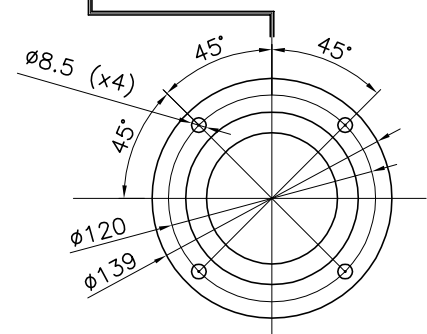


WASHING POSITION

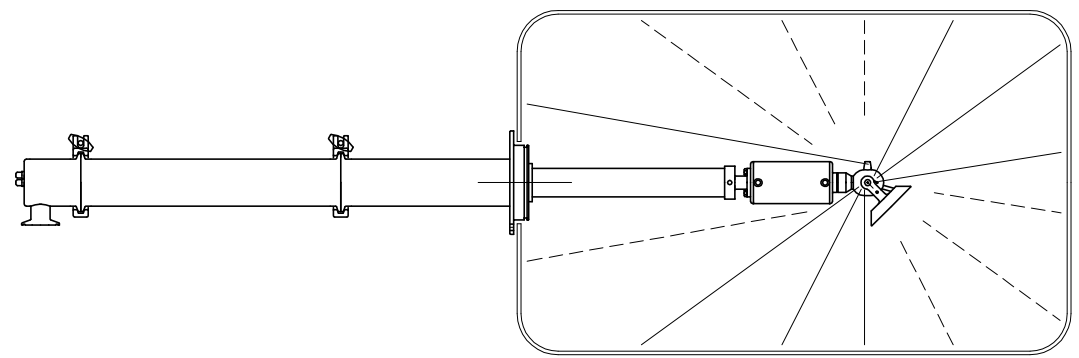
PARKING POSITION



TECHNICAL DATA	
O-RINGS	FDA EPDM
BUSHINGS	PEEK
NOZZLES POSITIONS	7 x $\phi 3.0$
NOZZLES TYPE	INTEGRATED
OPERATING FLOW RANGE	50 TO 100 L/min
OPERATING PRESSURE RANGE	3 TO 10 bar
MAX OPERATING TEMPERATURE	90 °C
MATERIAL	INOX AISI 316 + PEEK
ROTATION SPEED RANGE	12 TO 27 RPM
ROTATION DRIVE	AQUAMOTOR TURBINE
WEIGHT	8.3 KG



CE Ex II 1 GD TX Zone 0-20



RUGOSITA' (UNI 4600)	MODIFICA	1	2	3	4	5	
GREZZO	FOGLIO DATA						
~ = \checkmark	TOLLERANZE GENERALI classe m UNI-EN 22768/1						
SGROSS.		0 \pm 6	6 \pm 30	30 \pm 120	120 \pm 400	400 \pm 1000	1000 \pm 2000
∇ = 3.2/ ∇	NOTE:	\pm 0.1	\pm 0.2	\pm 0.3	\pm 0.5	\pm 0.8	\pm 1.2
FINITURA	MATERIALE:						
∇ = 1.6/ ∇	DESCRIZIONE:	XT 076AAAC					
RETTIFICA	INSTALLATION DRAWING						
∇ = 0.8/ ∇							

Bolondi
CLEANING HEADS
MONTECCHIO E. (RE) - ITALY

DISEGN.: CR | CONTR.: DM
DATA: 24.01.18 | MOD.
SCALA: 1:3 | A3 | 0
CODICE: XT 076AAAC