



## RACCORDI

- Ricavati da particolari stampati a caldo o laminati e solubilizzati.
- Accurata lavorazione delle parti filettate per eliminare l'ingrippaggio durante gli accoppiamenti.
- Eliminazione delle parti finali delle filettature con operazioni meccaniche per evitare infortuni durante la manipolazione dei pezzi.
- Finitura standard: lucidatura esterna norme DIN; satinatura esterna norme SMS, BS, ISS.

## UNIONS

- Made from hot-rolled or press-forged material and solution heat-treated.
- Precise machining of the threaded parts to eliminate seizure during coupling.
- Elimination of end parts of threading with mechanical operations to prevent accidents during handling of the pieces.
- Standard finish: external polishing to DIN standards; external glazing to SMS, BS, ISS standards.

## RACCORDS

- Obtenus à partir de pièces moulées à chaud ou laminées et solubilisées.
- Usinage soigné des parties filetées pour éliminer le grippage pendant les assemblages.
- Elimination des parties finales des filetages à l'aide d'opérations mécaniques pour éviter les accidents pendant le maniement des pièces.
- Finissage standard: polissage extérieur normes DIN; satinage extérieur normes SMS, BS, ISS.

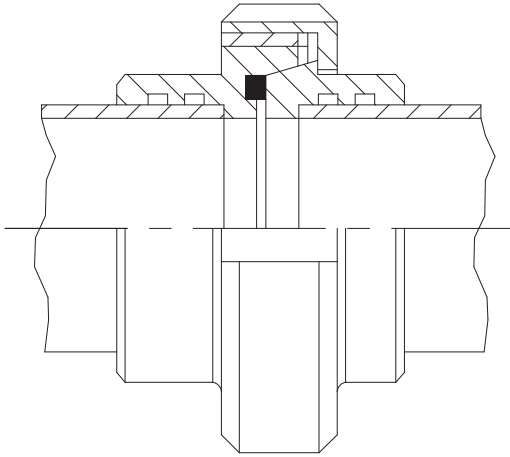
## RACORES

- Obtenidos a partir de piezas estampadas en caliente o laminadas y solubilizadas.
- Cuidadosa elaboración de las piezas roscadas para eliminar el agarrotamiento durante los acoplamientos.
- Eliminación de las partes terminales de las roscas con operaciones mecánicas para evitar accidentes durante la manipulación de las piezas.
- Acabado estándar: pulido exterior normas DIN; satinado exterior normas SMS, BS, ISS.



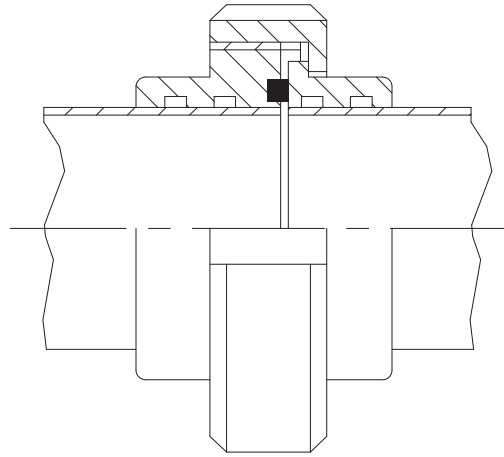
**RACCORDO DIN**  
**DIN UNION**

**RACCORD DIN**  
**RACOR DIN**



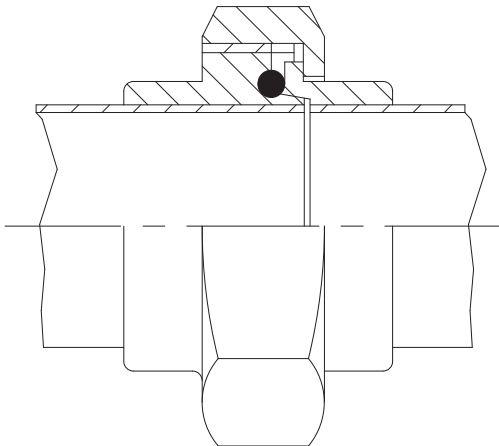
**RACCORDO SMS**  
**SMS UNION**

**RACCORD SMS**  
**RACOR SMS**



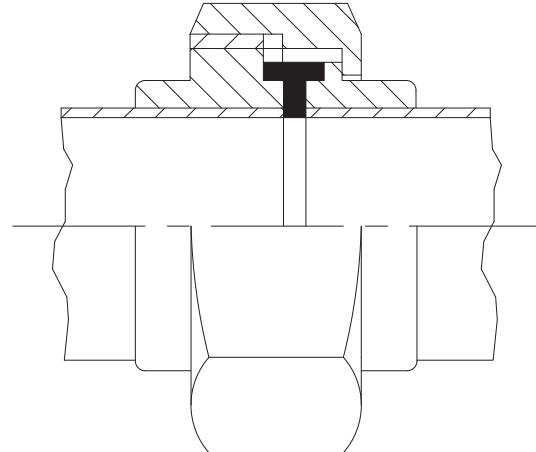
**RACCORDO BS**  
**BS UNION**

**RACCORD BS**  
**RACOR BS**



**RACCORDO ISS**  
**ISS UNION**

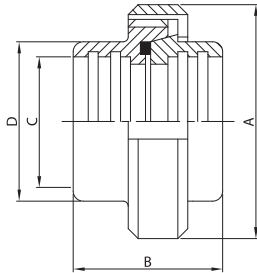
**RACCORD ISS**  
**RACOR ISS**





**RACCORDO MR.**  
EG. UNION  
RACCORD DR.  
RACOR MR.

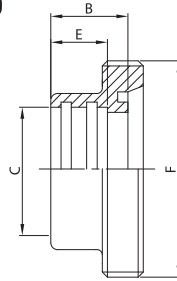
**100 D**



DN	A	B	C	D	gr
10	38,0	35,0	12,0	18,0	135
15	44,0	35,0	18,0	24,0	184
20	54,0	37,0	22,0	30,0	319
25	63,0	45,0	28,0	35,0	377
32	70,0	51,0	34,0	41,0	470
40	78,0	53,0	40,0	48,0	585
50	92,0	57,0	52,0	61,0	800
65	112,0	65,0	70,0	79,0	1.215
80	127,0	75,0	85,0	93,0	1.750
100	148,0	89,0	101,6	114,0	2.770
104	148,0	89,0	104,0	114,0	2.770

**BOCC. FILETTATO MR.**  
EG. MALE PART  
NEZ FILETÉ DR.  
MACHO RACOR MR.

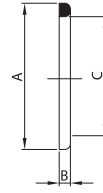
**101 D**



DN	B	C	E	F	gr
10	17,0	12,0	12,0	28-8	40
15	17,0	18,0	12,0	34-8	55
20	18,0	22,0	12,0	44-6	110
25	22,0	28,0	15,0	52-6	130
32	25,0	34,0	18,0	58-6	170
40	26,0	40,0	20,0	65-6	210
50	28,0	52,0	22,0	78-6	280
65	32,0	70,0	25,0	95-6	380
80	37,0	85,0	28,0	110-4	600
100	44,0	101,6	35,0	130-4	1.000
104	44,0	104,0	35,0	130-4	1.000

**GUARNIZIONE PER RACC.**  
SEAL RING FOR UNION  
JOINT DE RACCORD  
JUNTA RACOR

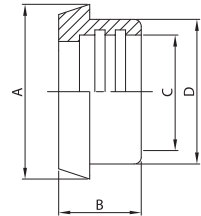
**131 D**



DN	A	B	C
10	20,0	4,0	12,0
15	26,0	4,0	18,0
20	33,0	4,0	23,0
25	40,0	5,0	30,0
32	46,0	5,0	36,0
40	52,0	5,0	42,0
50	64,0	5,0	54,0
65	81,0	5,0	71,0
80	95,0	5,0	85,0
100/104	114,0	5,0	104,0
125	142,0	6,0	130,0
150	167,0	6,0	155,0

**BOCC. CONICO MR.**  
EG. TAPER PART  
DOUILLE DR.  
CASQUILLO RACOR MR.

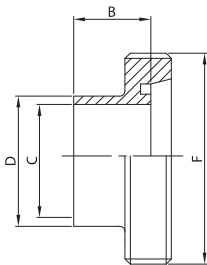
**111 D**



DN	A	B	C	D	gr
10	22,0	17,0	12,0	18,0	25
15	28,0	17,0	18,0	24,0	30
20	36,0	18,0	22,0	30,0	60
25	44,0	22,0	28,0	35,0	85
32	50,0	25,0	34,0	41,0	110
40	56,0	26,0	40,0	48,0	135
50	68,0	28,0	52,0	61,0	200
65	86,0	32,0	70,0	79,0	295
80	100,0	37,0	85,0	93,0	380
100	121,0	44,0	101,6	114,0	780
104	121,0	44,0	104,0	114,0	780

**BOCC. FILETTATO SR.**  
WG. MALE PART  
NEZ FILETÉ SR.  
MACHO RACOR SR.

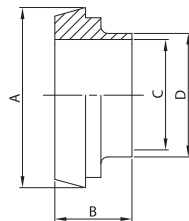
**102 D**



DN	B	C	D	F	gr
10	17,0	10,0	12,0	28-8	30
15	17,0	16,0	18,0	34-8	50
20	18,0	20,0	22,0	44-6	100
25	22,0	25,0	28,0	52-6	120
32	25,0	31,0	34,0	58-6	150
40	26,0	37,0	40,0	65-6	180
50	28,0	49,0	52,0	78-6	240
65	32,0	66,0	70,0	95-6	340
80	37,0	81,0	85,0	110-4	540
100	44,0	97,6	101,6	130-4	740
104	44,0	100,0	104,0	130-4	740

**BOCC. CONICO SR.**  
WG. TAPER PART  
DOUILLE SR.  
CASQUILLO RACOR SR.

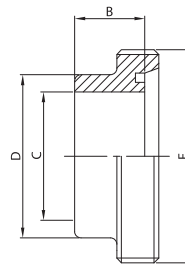
**112 D**



DN	A	B	C	D	gr
10	22,0	17,0	10,0	12,0	20
15	28,0	17,0	16,0	18,0	30
20	36,0	18,0	20,0	22,0	60
25	44,0	22,0	25,0	28,0	90
32	50,0	25,0	31,0	34,0	100
40	56,0	26,0	37,0	40,0	120
50	68,0	28,0	49,0	52,0	180
65	86,0	32,0	66,0	70,0	280
80	100,0	37,0	81,0	85,0	380
100	121,0	44,0	97,6	101,6	660
104	121,0	44,0	100,0	104,0	660

**BOCC. FILETT. GROSSO SP.**  
WG. MALE PART  
NEZ FILETÉ SR.  
MACHO R. ESPESO SR.

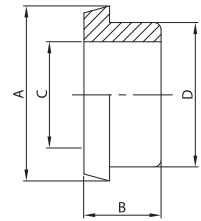
**117 D**



DN	B	C	D	F	gr
10	17,0	10,0	18,0	28-8	40
15	17,0	16,0	24,0	34-8	60
20	18,0	20,0	30,0	44-6	120
25	22,0	25,0	35,0	52-6	140
32	25,0	31,0	41,0	58-6	180
40	26,0	37,0	48,0	65-6	240
50	28,0	49,0	61,0	78-6	360
65	32,0	66,0	79,0	95-6	420
80	37,0	81,0	93,0	110-0	670
100	44,0	97,6	114,0	130-4	1.240
104	44,0	100,0	114,0	130-4	1.240
125	23,0	125,0	137,0	160-4	1.600
150	37,0	150,0	163,0	190-4	2.000

**BOCC. CONICO GROSSO SP.**  
WG. THICK TAPER PART  
DOUILLE ÉPAISSE SR.  
CASQUILLO R. ESPESO SR.

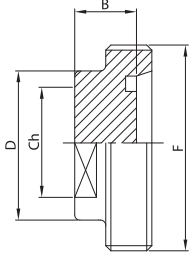
**119 D**



DN	A	B	C	D	gr
10	22,0	17,0	10,0	18,0	30
15	28,0	17,0	16,0	24,0	40
20	36,0	18,0	20,0	30,0	70
25	44,0	22,0	25,0	35,0	100
32	50,0	25,0	31,0	41,0	140
40	56,0	26,0	37,0	48,0	180
50	68,0	28,0	49,0	61,0	230
65	86,0	32,0	66,0	79,0	360
80	100,0	37,0	81,0	93,0	500
100	121,0	44,0	97,6	114,0	910
104	121,0	44,0	100,0	114,0	910
125	150,0	23,0	125,0	137,0	1.300
150	176,0	37,0	150,0	163,0	1.800

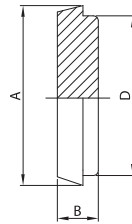


**TAPPO FILETTATO  
BLANK MALE  
OBTURATEUR FILETÉ  
MACHO R. CIEGO**

**104 D**


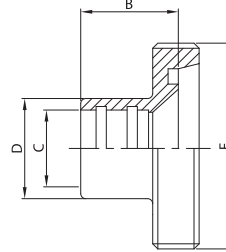
DN	B	Ch	D	F	gr
10	18,0	13,0	18,0	28-8	30
15	18,0	19,0	24,0	34-8	50
20	18,0	24,0	30,0	44-6	100
25	17,0	27,0	35,0	52-6	240
32	17,0	32,0	41,0	58-6	290
40	17,0	40,0	48,0	65-6	370
50	17,0	50,0	61,0	78-6	530
65	18,0	65,0	79,0	95-6	800
80	22,0	80,0	93,0	110-4	1.050
100	20,0	100,0	114,0	130-4	1.870

**TAPPO CONICO  
TAPER BLANK  
OBTURATEUR  
CASQUILLO R. CIEGO**

**114 D**


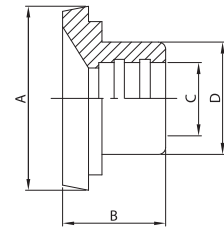
DN	A	B	D	gr
10	22,0	10,0	18,0	25
15	28,0	10,0	24,0	42
20	36,0	12,0	30,0	85
25	44,0	14,0	35,0	140
32	50,0	14,0	41,0	180
40	56,0	14,0	48,0	230
50	68,0	15,0	61,0	380
65	86,0	17,0	79,0	700
80	100,0	17,0	93,0	970
100	121,0	21,0	114,0	1.750
125	150,0	24,0	137,0	3.120
150	176,0	25,0	163,0	4.450

**RIDUZIONE FILETTATA MR.  
EG. MALE REDUCER  
NEZ FILETÉ RÉDUIT DR.  
MACHO R. REDUCCIÓN MR.**

**105 D**


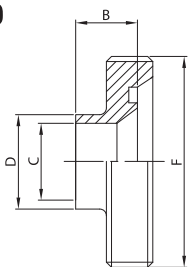
DN	B	C	D	F	gr
32/25	21,0	28,0	35,0	58-6	150
40/25	21,0	28,0	35,0	65-6	200
40/32	23,0	34,0	41,0	65-6	200
50/25	27,0	28,0	35,0	78-6	260
50/32	27,0	34,0	41,0	78-6	340
50/40	28,0	40,0	48,0	78-6	300
65/40	28,0	40,0	48,0	95-6	440
65/50	32,0	52,0	61,0	95-6	460
80/65	34,0	70,0	79,0	110-4	720
100/80	35,0	85,0	93,0	130-4	1.200

**RIDUZIONE CONICA MR.  
EG. TAPER REDUCER  
DOUILLE RÉDUITE DR.  
CASQUILLO R. REDUC. MR.**

**115 D**


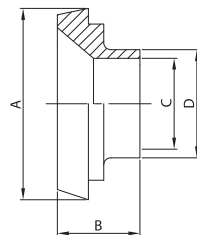
DN	A	B	C	D	gr
32/25	50,0	25,0	28,0	35,0	140
40/25	56,0	25,0	28,0	35,0	180
40/32	56,0	28,0	34,0	41,0	180
50/25	68,0	28,0	28,0	35,0	280
50/32	68,0	28,0	34,0	41,0	280
50/40	68,0	31,0	40,0	48,0	300
65/40	86,0	32,0	40,0	48,0	500
65/50	86,0	33,0	52,0	61,0	500
80/65	100,0	38,0	70,0	79,0	540
100/80	121,0	41,0	85,0	93,0	980

**RIDUZIONE FILETTATA SR.  
WG. MALE REDUCER  
NEZ FILETÉ RÉDUIT SR.  
MACHO R. REDUCCIÓN SR.**

**106 D**


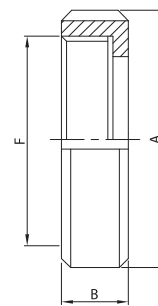
DN	B	C	D	F	gr
32/28	23,0	25,0	28,0	58-6	160
40/28	23,0	25,0	28,0	65-6	210
40/34	25,0	31,0	34,0	65-6	220
50/28	25,0	25,0	28,0	78-6	220
50/34	25,0	31,0	34,0	78-6	330
50/40	25,0	37,0	40,0	78-6	330
65/40	28,0	37,0	40,0	95-6	460
65/52	29,0	49,0	52,0	95-6	610
80/70	33,0	66,0	70,0	110-4	840
100/85	35,0	81,0	85,0	130-4	1.250

**RIDUZIONE CONICA SR.  
WG. TAPER REDUCER  
DOUILLE RÉDUITE SR.  
CASQUILLO R. REDUC. SR.**

**116 D**


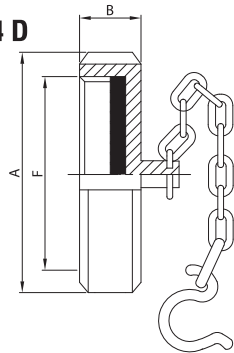
DN	A	B	C	D	gr
32/28	50,0	18,0	25,0	28,0	135
40/28	56,0	18,0	25,0	28,0	185
40/34	56,0	18,0	31,0	34,0	200
50/28	68,0	19,0	25,0	28,0	285
50/34	68,0	19,0	31,0	34,0	275
50/40	68,0	19,0	37,0	40,0	280
65/40	86,0	21,0	37,0	40,0	515
65/52	86,0	21,0	49,0	52,0	480
80/70	100,0	21,0	66,0	70,0	625
100/85	121,0	25,0	81,0	85,0	880

**GIRELLA  
ROUND NUT  
ÉCROU  
TUERCA**

**121 D**


DN	A	B	F	gr
10	38,0	18,0	28-8	70
15	44,0	18,0	34-8	98
20	54,0	21,0	44-6	150
25	63,0	21,0	52-6	160
32	70,0	21,0	58-6	190
40	78,0	21,0	65-6	240
50	92,0	22,0	78-6	320
65	112,0	25,0	95-6	540
80	127,0	30,0	110-4	770
100	148,0	31,0	130-4	990
125	178,0	35,0	160-4	1.400
150	210,0	41,0	190-4	1.800

**GIRELLA CIECA + CAT.  
ROUND NUT + CHAIN  
ÉCROU BOUCHON + CH.  
TUERCA CIEGA + CAD.**

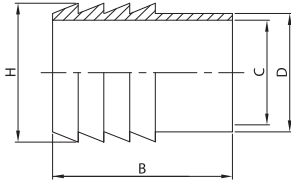
**124 D**


DN	A	B	F	gr
10	38,0	18,0	28-8	100
15	44,0	18,0	34-8	120
20	54,0	21,0	44-6	180
25	63,0	21,0	52-6	200
32	70,0	21,0	58-6	250
40	78,0	21,0	65-6	290
50	92,0	22,0	78-6	370
65	112,0	25,0	95-6	700
80	127,0	30,0	110-4	970
100	148,0	31,0	130-4	1.400
125	178,0	35,0	160-4	1.800
150	210,0	41,0	190-4	2.200



ATT. PORTAGOMMA EL.  
HOSE CONNECTION PE.  
MANCHON À LIGATURER  
MANGUITO MANGUERA EL.

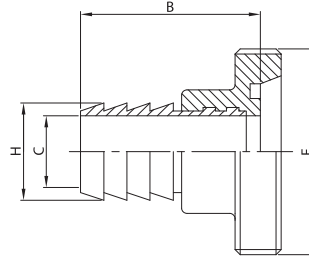
140 L



DN	B	C	D	H	gr
28	42,0	25,0	28,0	34,0	80
34	45,0	31,0	34,0	40,0	105
40	52,0	37,0	40,0	46,0	145
52	59,0	49,0	52,0	58,0	210
70	72,0	66,0	70,0	76,0	380
85	73,0	81,0	85,0	93,0	570
101	95,0	97,6	101,6	114,0	1.400

ATT. PORTAG. + BF. MT.  
HOSE CONNECTION + MP. ED.  
NEZ FILETÉ À LIGATURER  
M. M. MACHO MD.

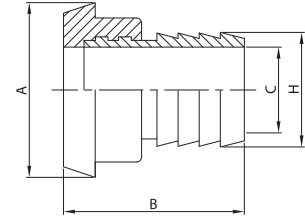
141 D



DN	B	C	F	H	gr
25	49,0	25,0	52-6	34,0	212
32	52,0	31,0	58-6	40,0	275
40	58,0	37,0	65-6	46,0	355
50	65,0	49,0	78-6	58,0	490
65	79,0	66,0	95-6	76,0	760
80	82,0	81,0	110-4	93,0	1.170
100	104,0	97,6	130-4	114,0	2.400

ATT. PORTAG. + BC. MT.  
HOSE CONNECTION + TP. ED.  
DOUILLE À LIGATURER  
M. M. CASQUILLO MD.

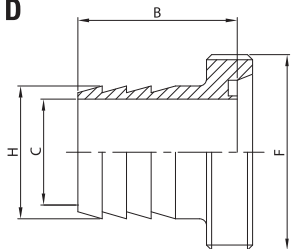
142 D



DN	A	B	C	H	gr
25	44,0	49,0	25,0	34,0	165
32	50,0	52,0	31,0	40,0	215
40	56,0	58,0	37,0	46,0	280
50	68,0	65,0	49,0	58,0	410
65	86,0	79,0	66,0	76,0	675
80	100,0	82,0	81,0	93,0	950
100	121,0	104,0	97,6	114,0	2.180

PORTAGOMMA EF.  
HOSE CONNECTION ME.  
PORTE C. NEZ FILETÉ  
M. M. MACHO SR.

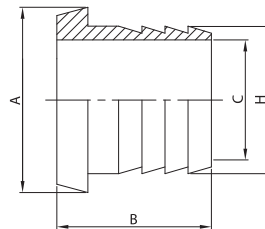
143 D



DN	B	C	F	H	gr
10	38,0	10,0	28-8	18,0	80
15	38,0	16,0	34-8	24,0	115
20	38,0	20,0	44-6	30,0	180
25	37,0	25,0	52-6	34,0	212
32	37,0	31,0	58-6	40,0	275
40	42,0	37,0	65-6	46,0	355
50	47,0	49,0	78-6	58,0	490
65	58,0	66,0	95-6	76,0	760
80	62,0	81,0	110-4	93,0	1.170
100	77,0	97,6	130-4	114,0	2.400

PORTAGOMMA EC.  
HOSE CONNECTION TE.  
PORTE C. DOUILLE  
M. M. CASQUILLO SR.

144 D

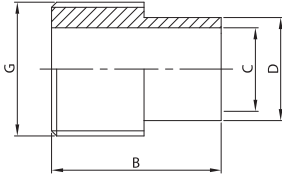


DN	A	B	C	H	gr
10	22,0	36,0	10,0	18,0	65
15	28,0	36,0	16,0	24,0	90
20	36,0	38,0	20,0	30,0	140
25	44,0	40,0	25,0	34,0	165
32	50,0	40,0	31,0	40,0	215
40	56,0	45,0	37,0	46,0	280
50	68,0	51,0	49,0	58,0	410
65	86,0	62,0	66,0	76,0	675
80	100,0	62,0	81,0	93,0	950
100	121,0	80,0	97,6	114,0	2.180



ATT. FILETTATO GAS EL.  
BSP MALE CONNECTION PE.  
PIÈCE FILETÉE GAS  
ROSCA GAS EL.

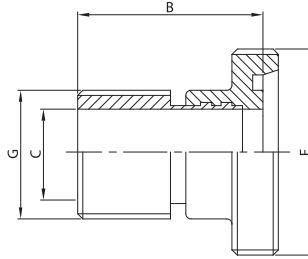
150 L



DN	B	C	D	G	gr
28	30,0	25,0	28,0	1"	45
34	33,0	31,0	34,0	1 1/4"	80
40	38,0	37,0	40,0	1 1/2"	110
52	43,0	49,0	52,0	2"	195
70	50,0	66,0	70,0	2 1/2"	240
85	58,0	81,0	85,0	3"	320
101	75,0	97,6	101,6	4"	850

ATT. FILETTATO GAS + BF. MT.  
BSP MALE CONN. + MP. ED.  
PIÈCE FIL. GAS + NEZ FIL.  
MACHO DIN + M. GAS MD.

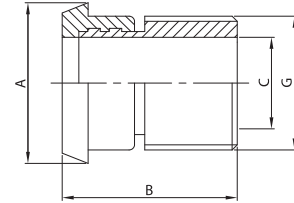
151 D



DN	B	C	F	G	gr
25	37,0	25,0	52-6	1"	177
32	40,0	31,0	58-6	1 1/4"	250
40	44,0	37,0	65-6	1 1/2"	320
50	49,0	49,0	78-6	2"	475
65	57,0	66,0	95-6	2 1/2"	620
80	67,0	81,0	110-4	3"	920
100	84,0	97,6	130-4	4"	1.850

ATT. FILETTATO GAS + BC. MT.  
BSP MALE CONN. + TP. ED.  
PIÈCE FIL. GAS + DOUILLE  
C. DIN + M. GAS MD.

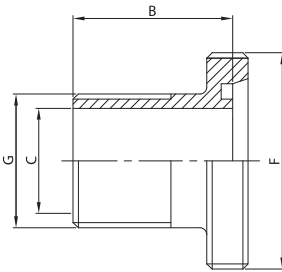
152 D



DN	A	B	C	G	gr
25	44,0	37,0	25,0	1"	130
32	50,0	40,0	31,0	1 1/4"	190
40	56,0	44,0	37,0	1 1/2"	245
50	68,0	49,0	49,0	2"	395
65	86,0	57,0	66,0	2 1/2"	535
80	100,0	67,0	81,0	3"	700
100	121,0	84,0	97,6	4"	1.630

BOCC. FILETTATO EF. GAS  
BSP MALE PART ME.  
ADAPTATEUR NEZ FILETÉ  
MACHO DIN MACHO GAS

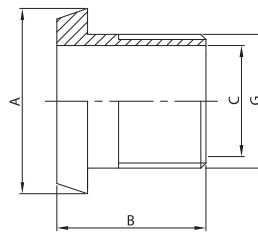
153 D



DN	B	C	F	G	gr
25	43,0	25,0	52-6	1"	177
32	43,0	31,0	58-6	1 1/4"	250
40	43,0	37,0	65-6	1 1/2"	320
50	43,0	49,0	78-6	2"	475
65	44,0	66,0	95-6	2 1/2"	620
80	48,0	81,0	110-4	3"	920
100	46,0	97,6	130-4	4"	1.850

BOCC. CONICO EF. GAS  
BSP TAPER PART ME.  
ADAPTATEUR DOUILLE  
CASQUILLO DIN M. GAS

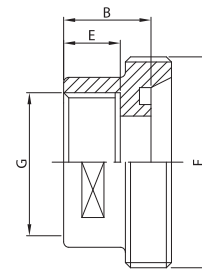
154 D



DN	A	B	C	G	gr
25	44,0	43,0	25,0	1"	130
32	50,0	43,0	31,0	1 1/4"	190
40	56,0	43,0	37,0	1 1/2"	245
50	68,0	44,0	49,0	2"	395
65	86,0	46,0	66,0	2 1/2"	535
80	100,0	46,0	81,0	3"	700
100	121,0	50,0	97,6	4"	1.630

BOCC. FILETT. D.I. FT. GAS  
MALE PART I.D. T. BSP  
ADAPT. NEZ FIL./FEM. GAS  
MACHO DIN HEMBRA GAS

161 D

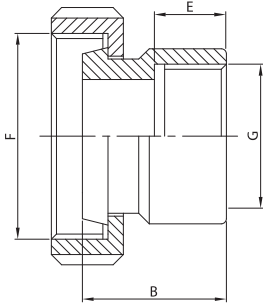


DN	B	E	F	G	gr
25	24,0	17,0	52-6	1"	220
32	28,0	17,0	58-6	1 1/4"	270
40	28,0	22,0	65-6	1 1/2"	320
50	33,0	22,0	78-6	2"	400
65	34,0	24,0	95-6	2 1/2"	510
80	37,0	27,0	110-4	3"	740
100	42,0	32,0	130-4	4"	1.150



BC. + G. D.I. FT. GAS  
TP. + N. I.D. T. BSP  
ADAPT. DOUILLE/FEM. GAS  
C. + T. DIN H. GAS

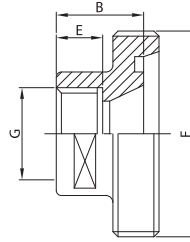
162 D



DN	B	E	F	G	gr
25	32,0	17,0	52-6	1"	325
32	35,0	17,0	58-6	1 1/4"	410
40	37,0	22,0	65-6	1 1/2"	500
50	41,0	22,0	78-6	2"	850
65	46,0	24,0	95-6	2 1/2"	1.245
80	49,0	27,0	110-4	3"	1.640
100	60,0	32,0	130-4	4"	2.200

BOCC. FILETT. D.I. FT. GAS  
MALE PART I.D. T. BSP  
ADAPT. NEZ FIL./FEM. GAS  
MACHO DIN HEMBRA GAS

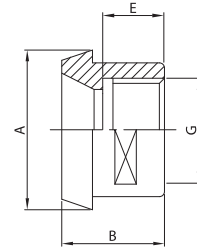
163 D



DN	B	E	F	G	gr
25	24,0	17,0	52-6	3/4"	50
32	28,0	17,0	58-6	1"	65
40	28,0	22,0	65-6	1 1/4"	120
50	33,0	22,0	78-6	1 1/2"	140
65	34,0	24,0	95-6	2"	180
80	37,0	27,0	110-4	2 1/2"	220
100	42,0	32,0	130-4	3 1/2"	290

BOCC. CONICO D.I. FT. GAS  
TAPER PART I.D. T. BSP  
ADAPT. DOUILLE/FEM. GAS  
C. DIN H. GAS REDUCCIÓN

164 D



DN	A	B	E	G	gr
25	44,0	22,0	17,0	3/4"	95
32	50,0	25,0	17,0	1"	120
40	56,0	26,0	22,0	1 1/4"	145
50	68,0	28,0	22,0	1 1/2"	210
65	86,0	32,0	24,0	2"	305
80	100,0	37,0	27,0	2 1/2"	390
100	121,0	44,0	32,0	3 1/2"	790