

HDBW3-40 Electric Sanitary Diaphragm Pump

Specification Parameter

Model	Max. Flow (L/min)	Max. Head (m)	Max. Suction Height (m)	Outlet Pressure (kg)	Max. Permitted Grain (mm)	Motor Power (kw)
HDBW3-40	48	40	4	4	3.2	1.5

Fluid Contact Parts

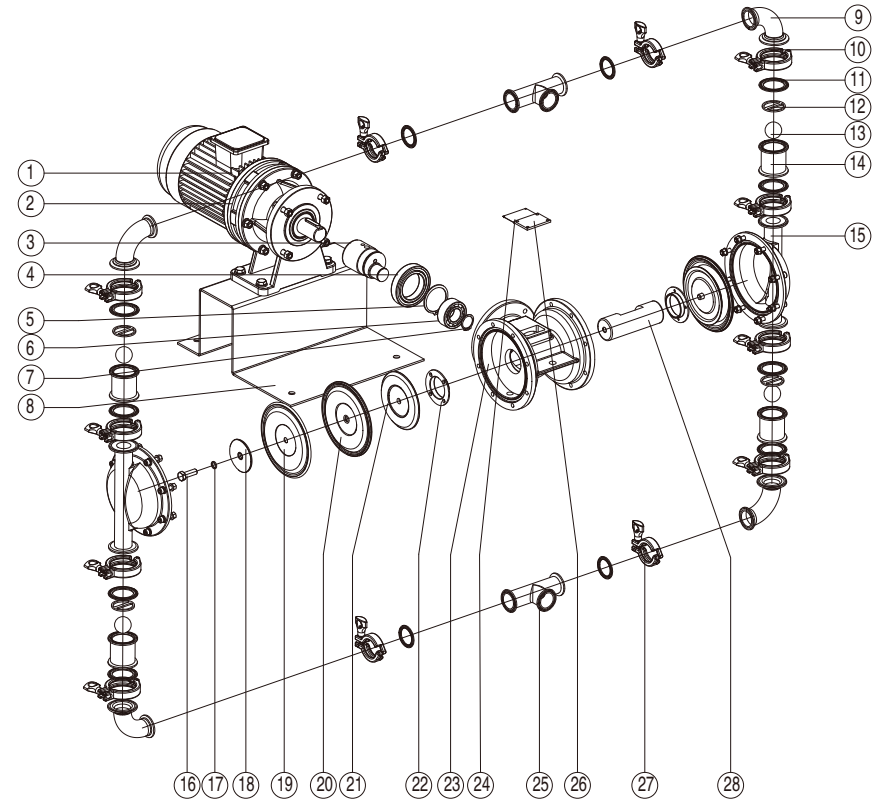
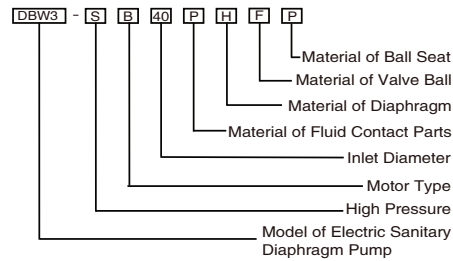
Cast Steel	Nodular Cast Iron	Aluminum Alloy	Engineering Plastics	Stainless Steel 304	Stainless Steel 316	Stainless Steel 316L	PVDF
G	Q	L	S	P	P316	P316L	F

Diaphragm

Butyronitrile	Santoprene	Polyether	Teflon	Super Teflon
D	A	M	T	N
Santoprene +Teflon	Santoprene +Super Teflon	Polyether +Teflon	Polyether +Super Teflon	
T	N	K	H	

Valve Ball & Ball Seat

Butyronitrile	Santoprene	PTFE	Stainless Steel 304	Stainless Steel 316	Stainless Steel 316L	Engineering Plastics
D	A	F	P	P316	P316L	S

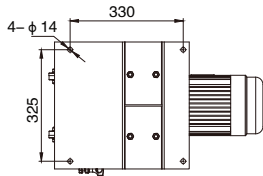


Parts List

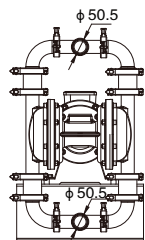
No.	Name	No.	Name	No.	Name	No.	Name
01	Motor	02	Reducer	03	Eccentric Axis	04	Large Bearing
05	Circlip (Large)	06	Small Bearing	07	Circlip (Small)	08	Electric Base
09	Tri-clamp	10	Clamp (Large)	11	Tri-clamp Washer	12	Ball Seat Baffle Plate
13	Valve Ball	14	Ball Seat	15	Stand Column	16	Splint Screw
17	Splint O-ring	18	Outer Splint	19	Teflon Diaphragm	20	Polyether Diaphragm
21	Inner Splint	22	Connecting Rod Axis Copper Sleeve	23	Center Body	24	Nameplate
25	Inlet/Outlet Pipe	26	Inspection Window	27	Clamp (Small)	28	Connecting Rod Axis

Installation Dimensions

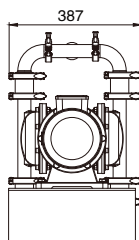
Upward View



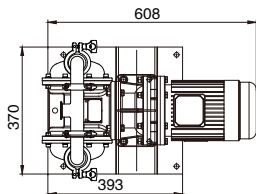
Right Side View



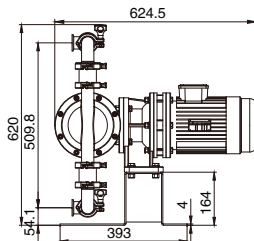
Left Side View



Vertical View



Front View



HDBW3-50 Electric Sanitary Diaphragm Pump

Specification Parameter

Model	Max. Flow (L/min)	Max. Head (m)	Max. Suction Height (m)	Outlet Pressure (kg)	Max. Permitted Grain (mm)	Motor Power (kw)
HDBW3-50	162	40	5	4	4.8	2.2

Fluid Contact Parts

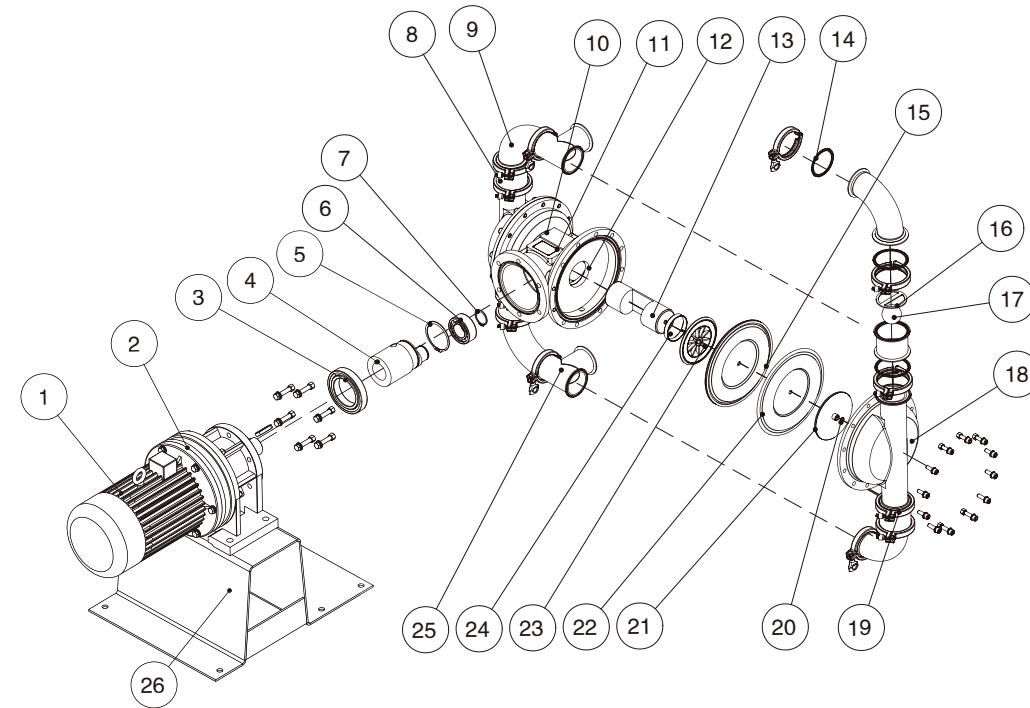
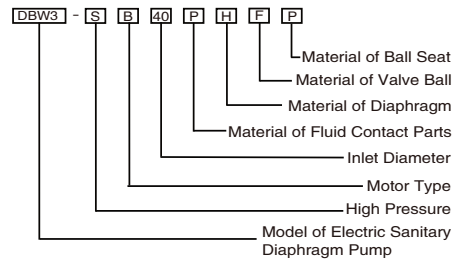
Cast Steel	Nodular Cast Iron	Aluminum Alloy	Engineering Plastics	Stainless Steel 304	Stainless Steel 316	Stainless Steel 316L	PVDF
G	Q	L	S	P	P316	P316L	F

Diaphragm

Butyronitrile	Santoprene	Polyether	Teflon	Super Teflon
D	A	M	T	N
Santoprene +Teflon	Santoprene +Super Teflon	Polyether +Teflon	Polyether +Super Teflon	
T	N	K	H	

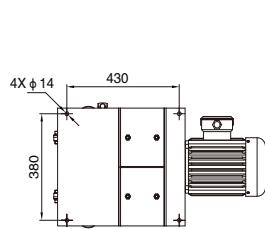
Valve Ball & Ball Seat

Butyronitrile	Santoprene	PTFE	Stainless Steel 304	Stainless Steel 316	Stainless Steel 316L	Engineering Plastics
D	A	F	P	P316	P316L	S

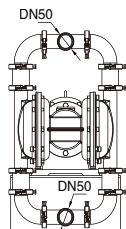


Installation Dimensions

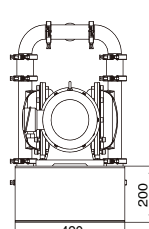
Upward View



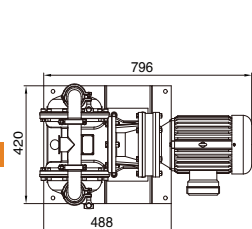
Right Side View



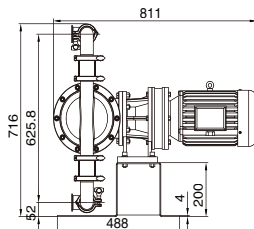
Left Side View



Vertical View



Front View



Parts List

No.	Name	No.	Name	No.	Name	No.	Name
01	Reducer	02	Base	03	Tri-clamp	04	Tri-clamp Washer (Large)
05	Ball Seat Baffle Plate	06	Clamp (Large)	07	Valve Ball	08	Ball Seat
09	Stand Column	10	Connecting Rod Axis Copper Sleeve	11	Connecting Rod Axis	12	Center Body
13	Clamp (Small)	14	Tri-clamp Washer (Small)	15	Inlet/Outlet Pipe	16	Inner Splint
17	Polyether Diaphragm	18	Teflon Diaphragm	19	Stainless Steel Outer Splint	20	Inspection Window
21	Small Circlip	22	Small Bearing	23	Large Circlip	24	Large Bearing
25	Eccentric Axis						

HDBW3-80

Electric Sanitary Diaphragm Pump

Specification Parameter

Model	Max. Flow (L/min)	Max. Head (m)	Max. Suction Height (m)	Outlet Pressure (kg)	Max. Permitted Grain (mm)	Motor Power (kw)
HDBW3-80	245	40	5	4	6.4	3

Fluid Contact Parts

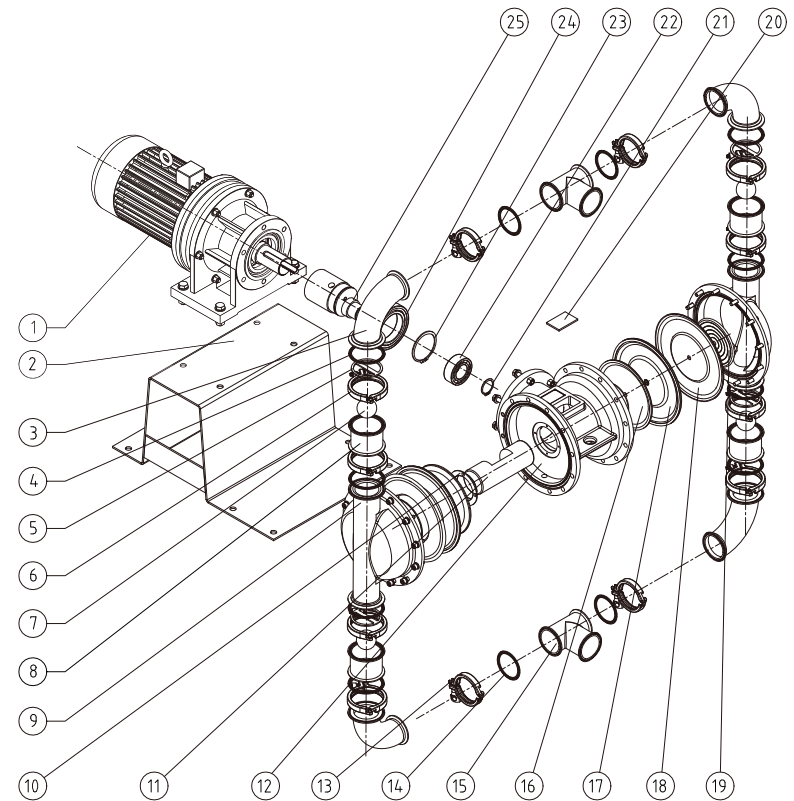
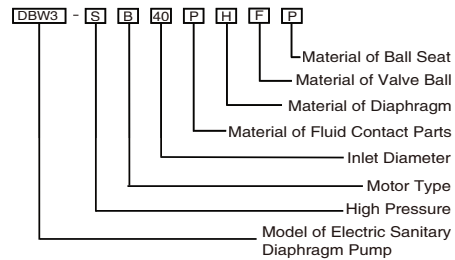
Cast Steel	Nodular Cast Iron	Aluminum Alloy	Engineering Plastics	Stainless Steel 304	Stainless Steel 316	Stainless Steel 316L	PVDF
G	Q	L	S	P	P316	P316L	F

Diaphragm

Butyronitrile	Santoprene	Polyether	Teflon	Super Teflon
D	A	M	T	N
Santoprene +Teflon	Santoprene +Super Teflon	Polyether +Teflon	Polyether +Super Teflon	
T	N	K	H	

Valve Ball & Ball Seat

Butyronitrile	Santoprene	PTFE	Stainless Steel 304	Stainless Steel 316	Stainless Steel 316L	Engineering Plastics
D	A	F	P	P316	P316L	S

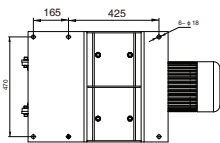


Parts List

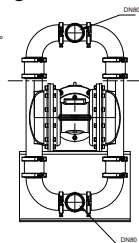
No.	Name	No.	Name	No.	Name	No.	Name
01	Reducer	02	Base	03	Tri-clamp	04	Tri-clamp Washer (Large)
05	Ball Seat Baffle Plate	06	Clamp (Large)	07	Valve Ball	08	Ball Seat
09	Stand Column	10	Connecting Rod Axis Copper Sleeve	11	Connecting Rod Axis	12	Center Body
13	Clamp (Small)	14	Tri-clamp Washer (Small)	15	Inlet/Outlet Pipe	16	Inner Splint
17	Polyether Diaphragm	18	Teflon Diaphragm	19	Stainless Steel Outer Splint	20	Inspection Window
21	Small Circlip	22	Small Bearing	23	Large Circlip	24	Large Bearing
25	Eccentric Axis						

Installation Dimensions

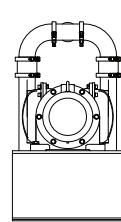
Upward View



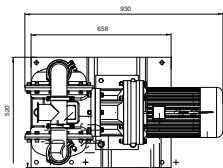
Right Side View



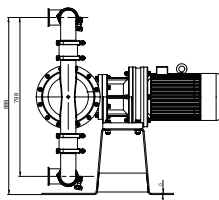
Left Side View



Vertical View



Front View



HDBW3S-40

Electric Sanitary Diaphragm Pump

Specification Parameter

Model	Max. Flow (L/min)	Max. Head (m)	Max. Suction Height (m)	Outlet Pressure (kg)	Max. Permitted Grain (mm)	Motor Power (kw)
HDBW3S-40	48	70	4	7	3.2	2.2

Fluid Contact Parts

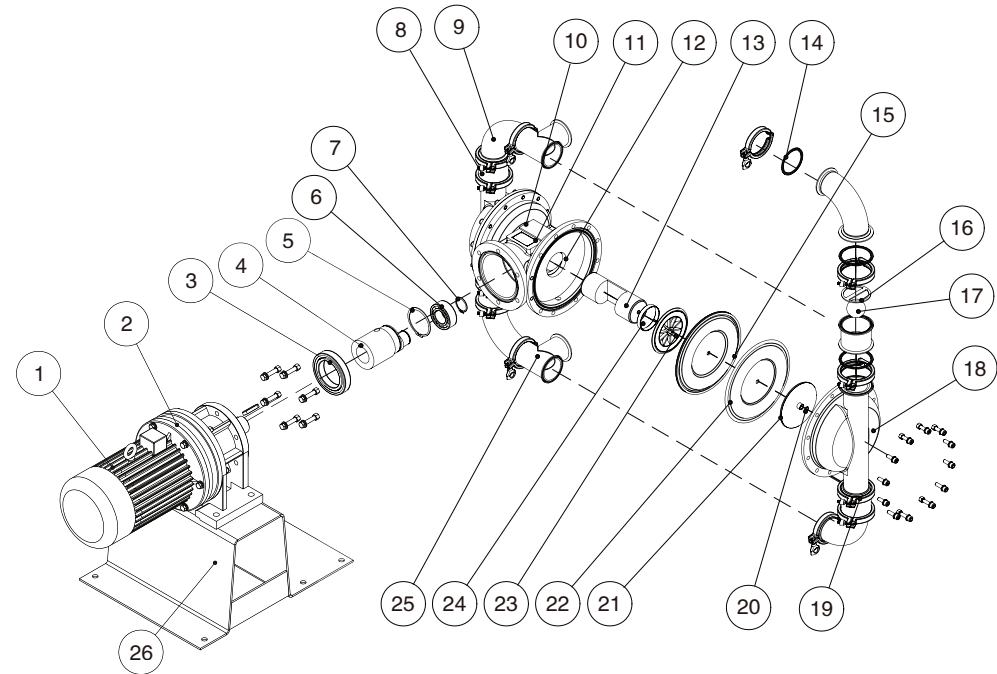
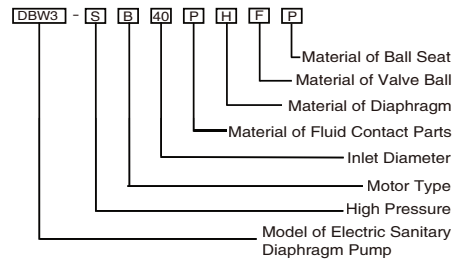
Cast Steel	Nodular Cast Iron	Aluminum Alloy	Engineering Plastics	Stainless Steel 304	Stainless Steel 316	Stainless Steel 316L	PVDF
G	Q	L	S	P	P316	P316L	F

Diaphragm

Butyronitrile	Santoprene	Polyether	Teflon	Super Teflon
D	A	M	T	N
Santoprene +Teflon	Santoprene +Super Teflon	Polyether +Teflon	Polyether +Super Teflon	
T	N	K	H	

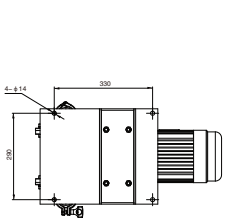
Valve Ball & Ball Seat

Butyronitrile	Santoprene	PTFE	Stainless Steel 304	Stainless Steel 316	Stainless Steel 316L	Engineering Plastics
D	A	F	P	P316	P316L	S

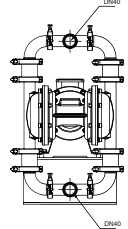


Installation Dimensions

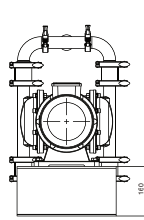
Upward View



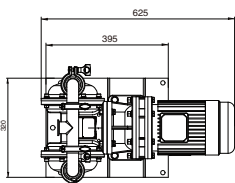
Right Side View



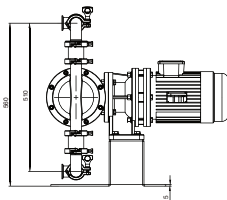
Left Side View



Vertical View



Front View



Parts List

No.	Name	No.	Name	No.	Name	No.	Name
01	Motor	02	Reducer	03	Bearing	04	Eccentric Axis
05	Circlip	06	Small Bearing	07	Circlip	08	Ball Seat
09	Tri-clamp	10	Inspection Window	11	Inspection Window Washer	12	Nodular Cast Iron Center Body
13	Connecting Rod Axis	14	Tri-clamp Washer	15	Teflon Baffle Plate	16	Ball Seat Baffle Plate
17	PTFE Ball	18	Stand Column	19	Clamp	20	Splint O-ring
21	Stainless Steel Outer Splint	22	Polyether Diaphragm	23	Aluminum Alloy Inner Splint	24	Connecting Rod Axis Copper Sleeve
25	Inlet/Outlet Pipe	26	Base				

HDBW3S -50

Electric Sanitary Diaphragm Pump

Specification Parameter

Model	Max. Flow (L/min)	Max. Head (m)	Max. Suction Height (m)	Outlet Pressure (kg)	Max. Permitted Grain (mm)	Motor Power (kw)
HDBW3S-50	162	70	5	7	4.8	3

Fluid Contact Parts

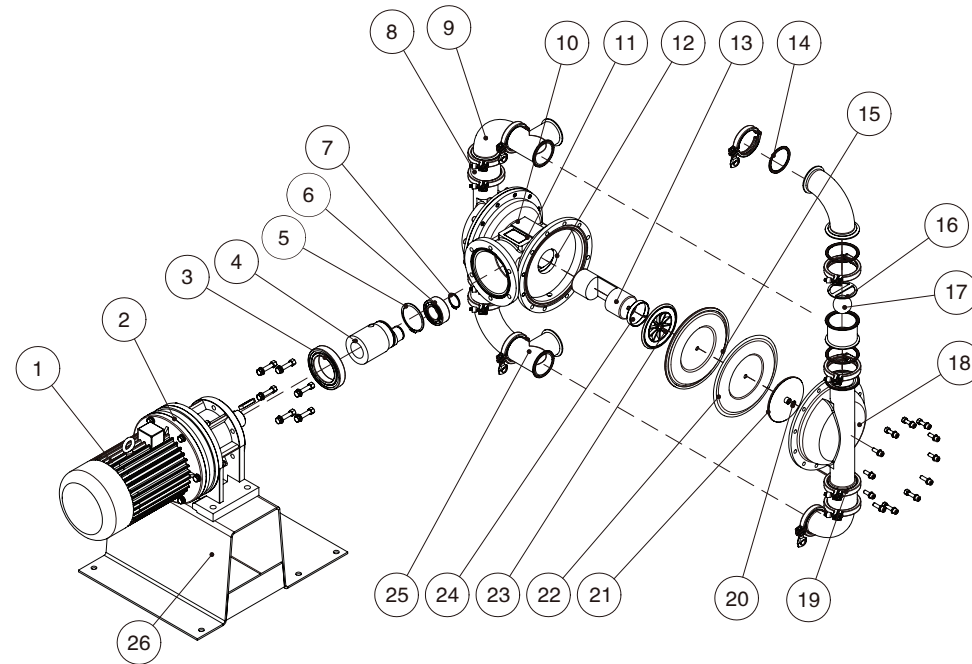
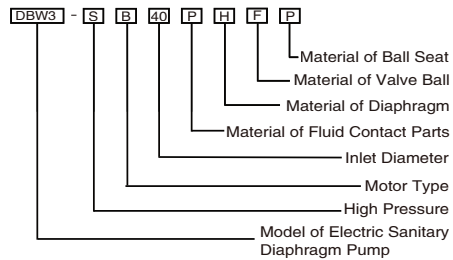
Cast Steel	Nodular Cast Iron	Aluminum Alloy	Engineering Plastics	Stainless Steel 304	Stainless Steel 316	Stainless Steel 316L	PVDF
G	Q	L	S	P	P316	P316L	F

Diaphragm

Butyronitrile	Santoprene	Polyether	Teflon	Super Teflon
D	A	M	T	N
Santoprene +Teflon	Santoprene +Super Teflon	Polyether +Teflon	Polyether +Super Teflon	
T	N	K	H	

Valve Ball & Ball Seat

Butyronitrile	Santoprene	PTFE	Stainless Steel 304	Stainless Steel 316	Stainless Steel 316L	Engineering Plastics
D	A	F	P	P316	P316L	S

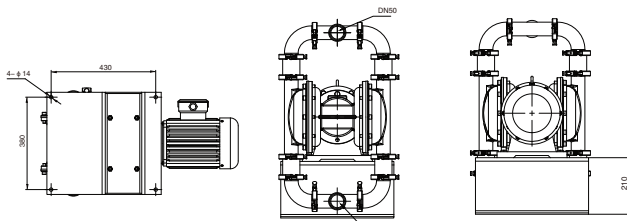


Installation Dimensions

Upward View

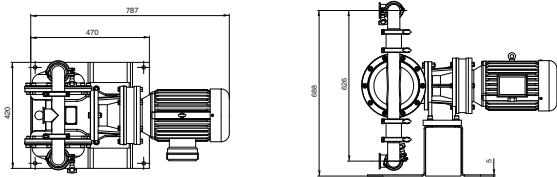
Right Side View

Left Side View



Vertical View

Front View



Parts List

No.	Name	No.	Name	No.	Name	No.	Name
01	Motor	02	Reducer	03	Bearing	04	Eccentric Axis
05	Circlip	06	Small Bearing	07	Circlip	08	Ball Seat
09	Tri-clamp	10	Inspection Window	11	Inspection Window Washer	12	Nodular Cast Iron Center Body
13	Connecting Rod Axis	14	Tri-clamp Washer	15	Teflon Baffle Plate	16	Ball Seat Baffle Plate
17	PTFE Ball	18	Stand Column	19	Clamp	20	Splint O-ring
21	Stainless Steel Outer Splint	22	Polyether Diaphragm	23	Aluminum Alloy Inner Splint	24	Connecting Rod Axis Copper Sleeve
25	Inlet/Outlet Pipe	26	Base				

HDBW3S-80 Electric Sanitary Diaphragm Pump

Specification Parameter

Model	Max. Flow (L/min)	Max. Head (m)	Max. Suction Height (m)	Outlet Pressure (kg)	Max. Permitted Grain (mm)	Motor Power (kw)
HDBW3S-80	245	70	5	7	6.4	4

Fluid Contact Parts

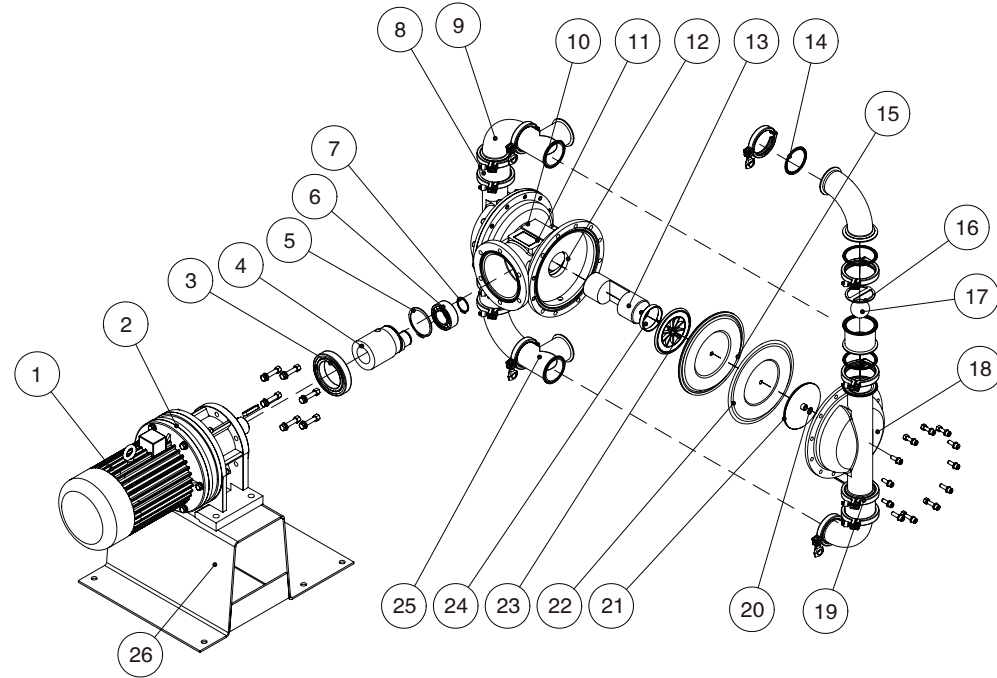
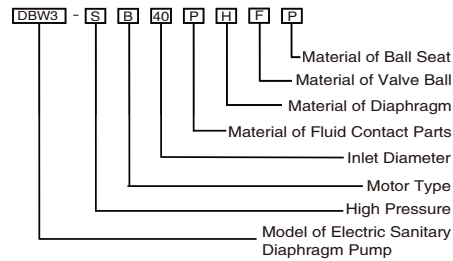
Cast Steel	Nodular Cast Iron	Aluminum Alloy	Engineering Plastics	Stainless Steel 304	Stainless Steel 316	Stainless Steel 316L	PVDF
G	Q	L	S	P	P316	P316L	F

Diaphragm

Butyronitrile	Santoprene	Polyether	Teflon	Super Teflon
D	A	M	T	N
Santoprene +Teflon	Santoprene +Super Teflon	Polyether +Teflon	Polyether +Super Teflon	
T	N	K	H	

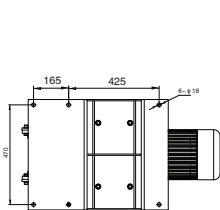
Valve Ball & Ball Seat

Butyronitrile	Santoprene	PTFE	Stainless Steel 304	Stainless Steel 316	Stainless Steel 316L	Engineering Plastics
D	A	F	P	P316	P316L	S

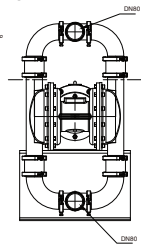


Installation Dimensions

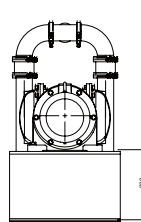
Upward View



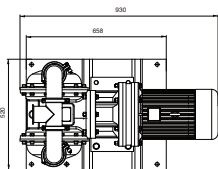
Right Side View



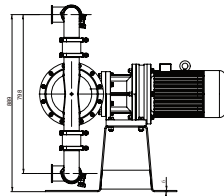
Left Side View



Vertical View



Front View



Parts List

No.	Name	No.	Name	No.	Name	No.	Name
01	Motor	02	Reducer	03	Bearing	04	Eccentric Axis
05	Circlip	06	Small Bearing	07	Circlip	08	Ball Seat
09	Tri-clamp	10	Inspection Window	11	Inspection Window Washer	12	Nodular Cast Iron Center Body
13	Connecting Rod Axis	14	Tri-clamp Washer	15	Teflon Baffle Plate	16	Ball Seat Baffle Plate
17	PTFE Ball	18	Stand Column	19	Clamp	20	Splint O-ring
21	Stainless Steel Outer Splint	22	Polyether Diaphragm	23	Aluminum Alloy Inner Splint	24	Connecting Rod Axis Copper Sleeve
25	Inlet/Outlet Pipe	26	Base				