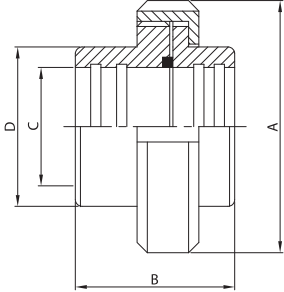




**RACCORDO MR.**  
EG. UNION  
RACCORD DR.  
RACOR MR.

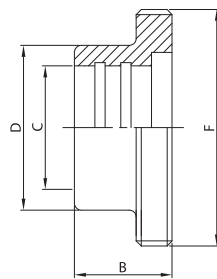
**100 S**



DN	A	B	C	D	gr
25	51,0	38,0	25,4	32,0	225
38	74,0	44,0	38,1	48,0	590
51	84,0	46,0	50,8	61,0	660
63	100,0	56,0	63,5	73,5	1.100
76	114,0	66,0	76,2	86,0	1.450
101	154,0	61,0	101,6	116,0	2.860
104	140,0	61,0	104,0	112,0	1.700

**BOCC. FILETTATO MR.**  
EG. MALE PART  
NEZ FILETÉ DR.  
MACHO RACOR MR.

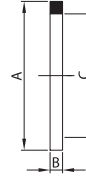
**101 S**



DN	B	C	D	F	gr
25	20,0	25,4	32,0	40-6	70
38	23,0	38,1	48,0	60-6	200
51	25,0	50,8	61,0	70-6	225
63	30,0	63,5	73,5	85-6	390
76	35,0	76,2	86,0	98-6	500
101	30,0	101,6	116,0	132-6	1.140
104	30,0	104,0	112,0	125-4	540

**GUARNIZIONE PER RACC.**  
SEAL RING FOR UNION  
JOINT DE RACCORD  
JUNTA RACOR

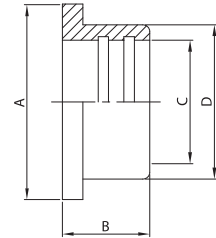
**131 S**



DN	A	B	C
25	32,0	5,5	25,4
38	48,0	5,5	38,1
51	61,0	5,5	50,8
63	73,5	5,5	63,5
76	86,0	5,5	76,0
101	113,5	5,5	101,5
104	116,0	5,5	104,0

**BOCC. LISCIO MR.**  
EG. LINER  
DOUILLE DR.  
CASQUILLO RACOR MR.

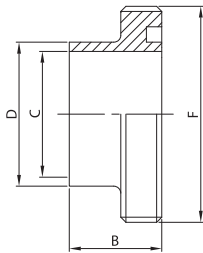
**111 S**



DN	A	B	C	D	gr
25	35,5	17,0	25,4	32,0	45
38	55,0	20,0	38,1	48,0	120
51	65,0	20,0	50,8	61,0	135
63	80,0	25,0	63,5	73,5	220
76	93,0	30,0	76,2	86,0	310
101	127,0	30,0	101,6	116,0	740
104	118,0	30,0	104,0	112,0	400

**BOCC. FILETTATO SR.**  
WG. MALE PART  
NEZ FILETÉ SR. LONG  
MACHO RACOR SR.

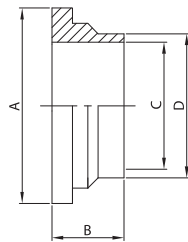
**102 S**



DN	B	C	D	F	gr
25	20,0	22,4	25,4	40-6	65
38	23,0	35,1	38,1	60-6	190
51	25,0	47,8	50,8	70-6	200
63	30,0	60,5	63,5	85-6	370
76	35,0	72,9	76,2	98-6	480
101	30,0	97,6	101,6	132-6	1.000
104	30,0	100,0	104,0	125-4	600

**BOCC. LISCIO SR.**  
WG. LINER  
DOUILLE SR. LONGUE  
CASQUILLO RACOR SR.

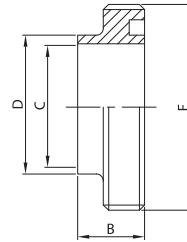
**112 S**



DN	A	B	C	D	gr
25	35,5	17,0	22,4	25,4	20
38	55,0	20,0	35,1	38,1	80
51	65,0	20,0	47,8	50,8	100
63	80,0	25,0	60,5	63,5	180
76	93,0	30,0	72,9	76,2	240
101	127,0	32,0	97,6	101,6	560
104	118,0	30,0	100,0	104,0	340

**BOCC. FILETT. CORTO SR.**  
WG. SHORT MALE PART  
NEZ FILETÉ SR. COURT  
MACHO R. CORTO SR.

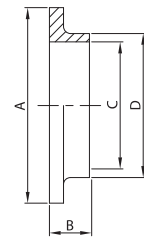
**103 S**



DN	B	C	D	F	gr
25	15,0	22,4	25,4	40-6	60
38	20,0	35,1	38,1	60-6	180
51	20,0	47,8	50,8	70-6	190
63	24,0	60,5	63,5	85-6	350
76	24,0	72,9	76,2	98-6	460
101	25,0	97,6	101,6	132-6	900
104	25,0	100,0	104,0	125-4	550

**BOCC. LISCIO CORTO SR.**  
WG. SHORT LINER  
DOUILLE SR. COURTE  
CASQUILLO R. CORTO SR.

**113 S**

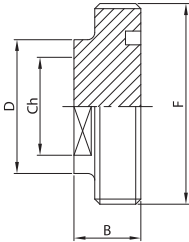


DN	A	B	C	D	gr
25	35,5	7,5	22,4	25,4	30
38	55,0	9,0	35,1	38,1	75
51	65,0	9,0	47,8	50,8	80
63	80,0	9,0	60,5	63,5	85
76	93,0	10,0	72,9	76,2	145
101	127,0	12,0	97,6	101,6	290
104	118,0	12,0	100,0	104,0	180



**TAPPO FILETTATO  
BLANK MALE  
OBTURATEUR FILETÉ  
MACHO R. CIEGO**

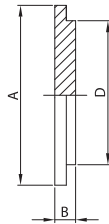
**104 S**



DN	B	Ch	D	F	gr
25	19,0	25,0	32,0	40-6	130
38	23,0	42,0	48,0	60-6	350
51	23,0	50,0	61,0	70-6	590
63	27,0	60,0	73,5	85-6	1.050
76	27,0	72,0	86,0	98-6	1.450
101	28,0	100,0	116,0	132-6	2.810
104	28,0	100,0	112,0	125-4	2.580

**TAPPO LISCI  
BLANK LINER  
OBTURATEUR  
CASQUILLO R. CIEGO**

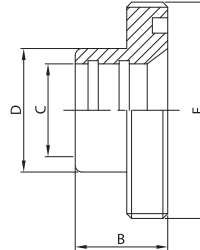
**114 S**



DN	A	B	D	gr
25	35,5	7,5	32,0	60
38	55,0	8,0	48,0	140
51	65,0	9,0	61,0	220
63	80,0	9,0	73,5	320
76	93,0	11,0	86,0	530
101	127,0	13,0	116,0	1.160
104	118,0	13,0	112,0	1.060

**RIDUZIONE FILETTATA MR.  
EG. MALE REDUCER  
NEZ FILETÉ RÉDUIT DR.  
MACHO R. REDUCCIÓN MR.**

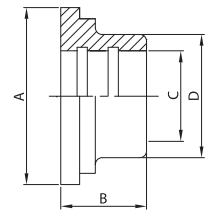
**105 S**



DN	B	C	D	F	gr
38/25	23,0	25,4	32,0	60-6	240
51/25	25,0	25,4	32,0	70-6	270
51/38	25,0	38,1	48,0	70-6	310
63/38	30,0	38,1	48,0	85-6	470
63/51	30,0	50,8	61,0	85-6	550
76/38	30,0	38,1	48,0	98-6	600
76/51	35,0	50,8	61,0	98-6	700
76/63	35,0	63,5	73,5	98-6	800
101/63	35,0	63,5	73,5	132-6	1.370
101/76	35,0	76,2	86,0	132-6	1.590

**RIDUZIONE LISCIA MR.  
EG. LINER REDUCER  
DOUILLE RÉDUITE DR.  
CASQUILLO R. REDUC. MR.**

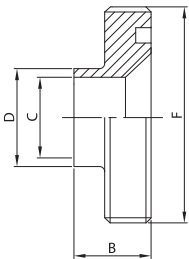
**115 S**



DN	A	B	C	D	gr
38/25	55,0	17,0	25,4	32,0	120
51/25	65,0	17,0	25,4	32,0	190
51/38	65,0	20,0	38,1	48,0	185
63/38	80,0	20,0	38,1	48,0	280
63/51	80,0	20,0	50,8	61,0	260
76/38	93,0	20,0	38,1	48,0	600
76/51	93,0	20,0	50,8	61,0	400
76/63	93,0	25,0	63,5	73,5	580
101/63	127,0	25,0	63,5	73,5	780
101/76	127,0	30,0	76,2	86,0	700

**RIDUZIONE FILETTATA SR.  
WG. MALE REDUCER  
NEZ FILETÉ RÉDUIT SR.  
MACHO R. REDUCCIÓN SR.**

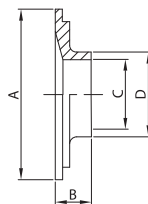
**106 S**



DN	B	C	D	F	gr
38/25	19,0	22,4	25,4	60-6	230
51/25	20,0	22,4	25,4	70-6	240
51/38	20,0	35,1	38,1	70-6	280
63/38	24,0	35,1	38,1	85-6	440
63/51	24,0	47,8	50,8	85-6	520
76/38	24,0	35,1	38,1	98-6	580
76/51	24,0	47,8	50,8	98-6	670
76/63	24,0	60,5	63,5	98-6	770
101/63	26,0	60,5	63,5	132-6	1.200
101/76	26,0	72,9	76,2	132-6	1.400

**RIDUZIONE LISCIA SR.  
WG. LINER REDUCER  
DOUILLE RÉDUITE SR.  
CASQUILLO R. REDUC. SR.**

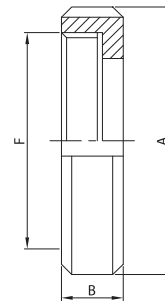
**116 S**



DN	A	B	C	D	gr
38/25	55,0	17,0	22,4	25,4	80
51/25	65,0	17,0	22,4	25,4	120
51/38	65,0	20,0	35,1	38,1	100
63/38	80,0	20,0	35,1	38,1	160
63/51	80,0	20,0	47,8	50,8	130
76/38	93,0	20,0	35,1	38,1	290
76/51	93,0	20,0	47,8	50,8	240
76/63	93,0	20,0	60,5	63,5	200
101/63	127,0	25,0	60,5	63,5	550
101/76	127,0	30,0	72,9	76,2	490

**GIRELLA  
ROUND NUT  
ÉCROU  
TUERCA**

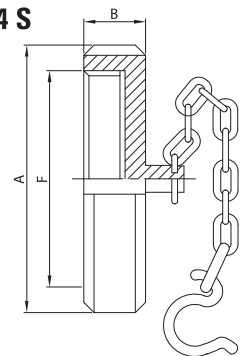
**121 S**



DN	A	B	F	gr
25	51,0	20,0	40-6	110
38	74,0	25,0	60-6	270
51	84,0	26,0	70-6	300
63	100,0	30,0	85-6	490
76	114,0	32,0	98-6	640
101	150,0	32,0	132-6	980
104	140,0	30,0	125-4	780

**GIRELLA CIECA + CAT.  
ROUND NUT + CHAIN  
ÉCROU BOUCHON + CH.  
TUERCA CIEGA + CAD.**

**124 S**

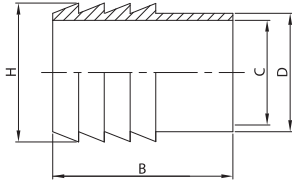


DN	A	B	F	gr
25	51,0	20,0	40-6	190
38	74,0	25,0	60-6	430
51	84,0	26,0	70-6	540
63	100,0	30,0	85-6	840
76	114,0	32,0	98-6	1.200
101	150,0	32,0	132-6	2.200
104	140,0	30,0	125-4	2.000



ATT. PORTAGOMMA EL.  
HOSE CONNECTION PE.  
MANCHON À LIGATURER  
MANGUITO MANGUERA EL.

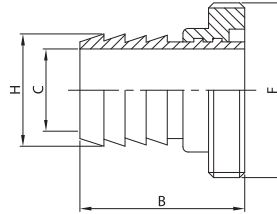
140 L



DN	B	C	D	H	gr
25	49,0	22,4	25,4	28,6	100
38	58,0	35,1	38,1	41,3	200
51	67,0	47,8	50,8	54,0	290
63	81,0	60,5	63,5	66,7	320
76	81,0	72,9	76,2	79,4	670
101	95,0	97,6	101,6	109,0	1.400

ATT. PORTAG. + BF. MT.  
HOSE CONNECTION + MP. ED.  
NEZ FILETÉ À LIGATURER  
M. M. MACHO MD.

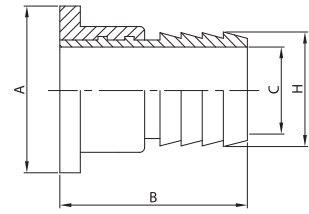
141 S



DN	B	C	F	H	gr
25	49,0	22,4	40-6	28,6	170
38	58,0	35,1	60-6	41,3	400
51	67,0	47,8	70-6	54,0	515
63	81,0	60,5	85-6	66,7	710
76	81,0	72,9	98-6	79,4	1.170
101	95,0	97,6	132-6	109,0	2.540

ATT. PORTAG. + BL. MT.  
HOSE CONNECTION + L. ED.  
DOUILLE À LIGATURER  
M. M. CASQUILLO MD.

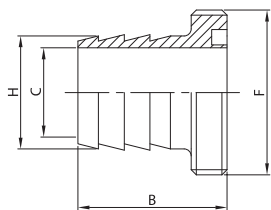
142 S



DN	A	B	C	H	gr
25	35,5	49,0	22,4	28,6	155
38	55,0	58,0	35,1	41,3	320
51	65,0	67,0	47,8	54,0	425
63	80,0	81,0	60,5	66,7	540
76	93,0	81,0	72,9	79,4	980
101	127,0	95,0	97,6	109,0	2.140

PORTAGOMMA EF.  
HOSE CONNECTION ME.  
PORTE C. NEZ FILETÉ  
M. M. MACHO SR.

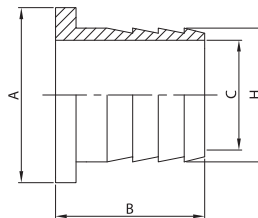
143 S



DN	B	C	F	H	gr
25	41,0	22,4	40-6	28,6	170
38	50,0	35,1	60-6	41,3	400
51	55,0	47,8	70-6	54,0	515
63	69,0	60,5	85-6	66,7	710
76	69,0	72,9	98-6	79,4	1.170
101	85,0	97,6	132-6	109,0	2.540

PORTAGOMMA EL.  
HOSE CONNECTION PE.  
PORTE C. DOUILLE  
M. M. CASQUILLO SR.

144 S

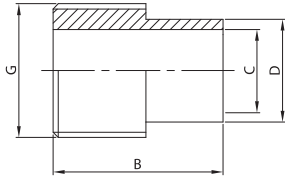


DN	A	B	C	H	gr
25	35,5	33,5	22,4	28,6	145
38	55,0	39,0	35,1	41,3	320
51	65,0	44,0	47,8	54,0	425
63	80,0	54,0	60,5	66,7	540
76	93,0	55,0	72,9	79,4	980
101	127,0	71,0	97,6	109,0	2.140



ATT. FILETTATO GAS EL.  
BSP MALE CONNECTION PE.  
PIÈCE FILETÉE GAS  
ROSCA GAS EL.

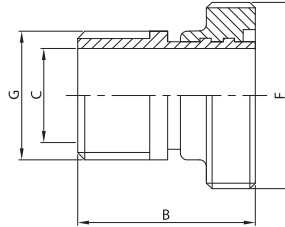
150 L



DN	B	C	D	G	gr
25	38,0	22,4	25,4	1"	70
38	45,0	35,1	38,1	1 1/2"	135
51	52,0	47,8	50,8	2"	200
63	60,0	60,5	63,5	2 1/2"	350
76	66,0	72,9	76,2	3"	540
101	75,0	97,6	101,6	4"	850

ATT. FILET. GAS + BF. MT.  
BSP MALE CONN. + MP. ED.  
PIÈCE FIL. GAS + NEZ FIL.  
MACHO SMS + M. GAS MD.

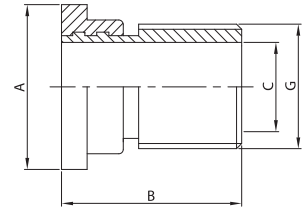
151 S



DN	B	C	F	G	gr
25	38,0	22,4	40-6	1"	140
38	45,0	35,1	60-6	1 1/2"	335
51	52,0	47,8	70-6	2"	425
63	60,0	60,5	85-6	2 1/2"	740
76	66,0	72,9	98-6	3"	1.040
101	75,0	97,6	132-6	4"	1.990

ATT. FILET. GAS + BL. MT.  
BSP MALE CONN. + L. ED.  
PIÈCE FIL. GAS + DOUILLE  
C. SMS + M. GAS MD.

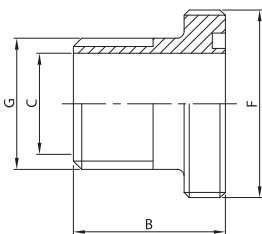
152 S



DN	A	B	C	G	gr
25	35,5	38,0	22,4	1"	115
38	55,0	45,0	35,1	1 1/2"	255
51	65,0	52,0	47,8	2"	335
63	80,0	60,0	60,5	2 1/2"	570
76	93,0	66,0	72,9	3"	850
101	127,0	75,0	97,6	4"	1.590

BOCC. FILETTATO EF. GAS  
BSP MALE PART ME.  
ADAPTATEUR NEZ FILETÉ  
MACHO SMS MACHO GAS

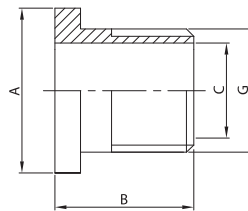
153 S



DN	B	C	F	G	gr
25	30,0	22,4	40-6	1"	140
38	42,0	35,1	60-6	1 1/2"	335
51	47,0	47,8	70-6	2"	425
63	55,0	60,5	85-6	2 1/2"	740
76	58,0	72,9	98-6	3"	1.040
101	72,0	97,6	132-6	4"	1.990

BOCC. LISCIO EF. GAS  
BSP LINER ME.  
ADAPTATEUR DOUILLE  
CASQUILLO SMS M. GAS

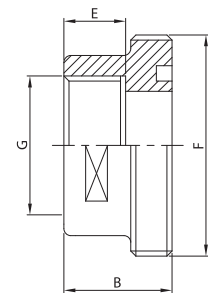
154 S



DN	A	B	C	G	gr
25	35,5	28,5	22,4	1"	115
38	55,0	29,0	35,1	1 1/2"	255
51	65,0	34,0	47,8	2"	335
63	80,0	34,0	60,5	2 1/2"	570
76	93,0	40,0	72,9	3"	850
101	127,0	41,0	97,6	4"	1.590

BOCC. FILET. D.I. FT. GAS  
MALE PART I.D. T. BSP  
ADAPT. NEZ FIL./FEM. GAS  
MACHO SMS HEMBRA GAS

161 S

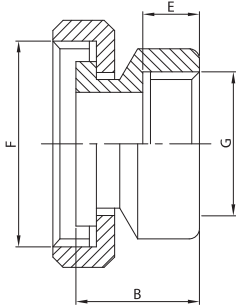


DN	B	E	F	G	gr
25	23,0	17,0	40-6	1"	100
38	32,0	19,0	60-6	1 1/2"	230
51	36,0	23,0	70-6	2"	270
63	42,0	24,0	85-6	2 1/2"	420
76	45,0	27,0	98-6	3"	540
101	50,0	30,0	132-6	4"	1.230



BL. + G. D.I. FT. GAS  
L. + N. I.D. T. BSP  
ADAPT. DOUILLE/FEM. GAS  
C. + T. SMS H. GAS

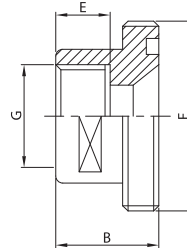
**162 S**



DN	B	E	F	G	gr
25	30,0	18,0	40-6	1"	200
38	33,0	18,0	60-6	1 1/2"	470
51	35,0	23,0	70-6	2"	540
63	40,0	23,0	85-6	2 1/2"	1.020
76	47,0	28,0	98-6	3"	1.370
101	54,0	28,0	132-6	4"	2.090

BOCC. FILET. D.I. FT. GAS  
MALE PART I.D. T. BSP  
ADAPT. NEZ FIL./FEM. GAS  
M. SMS H. GAS REDUCCIÓN

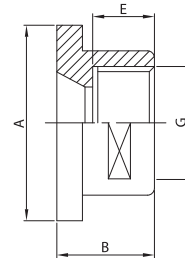
**163 S**



DN	B	E	F	G	gr
25	26,0	18,0	40-6	3/4"	70
38	30,0	18,0	60-6	1 1/4"	200
51	35,0	23,0	70-6	1 1/2"	225
63	39,0	23,0	85-6	2"	390
76	44,0	28,0	98-6	2 1/2"	500
101	45,0	28,0	132-6	3 1/2"	1.140

BOCC. LISCIÒ D.I. FT. GAS  
LINER I.D. T. BSP  
ADAPT. DOUILLE/FEM. GAS  
C. SMS H. GAS REDUCCIÓN

**164 S**



DN	A	B	E	G	gr
25	35,5	28,5	18,0	3/4"	45
38	55,0	29,0	18,0	1 1/4"	120
51	65,0	34,0	23,0	1 1/2"	135
63	80,0	34,0	23,0	2"	220
76	93,0	40,0	28,0	2 1/2"	310
101	127,0	41,0	28,0	3 1/2"	740