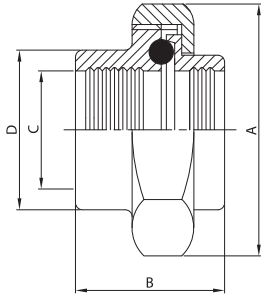




RACCORDO MR.
EG. UNION
RACCORD DR.
RACOR MR.

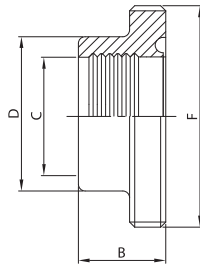
100 B



DN	A	B	C	D	gr
25	51,0	41,0	25,4	32,5	285
38	65,0	49,0	38,1	45,2	450
51	80,0	57,0	50,8	58,0	645
63	92,0	65,0	63,5	70,6	940
76	104,0	65,0	76,2	83,3	1.075
101	130,0	65,0	101,6	109,0	1.440

BOCC. FILETTATO MR.
EG. MALE PART
NEZ FILETÉ DR.
MACHO RACOR MR.

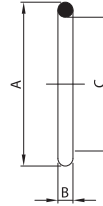
101 B



DN	B	C	D	F	gr
25	20,0	25,4	32,5	46-8	100
38	24,0	38,1	45,2	58-8	155
51	28,0	50,8	58,0	73-6	235
63	32,0	63,5	70,6	85-6	290
76	32,0	76,2	83,3	98-6	365
101	32,0	101,6	109,0	123-6	530

GUARNIZIONE PER RACC.
SEAL RING FOR UNION
JOINT DE RACCORD
JUNTA RACOR

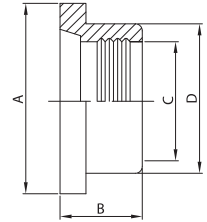
131 B



DN	A	B	C
25	39,9	6,6	26,7
38	52,6	6,6	39,4
51	65,3	6,6	52,1
63	78,0	6,6	64,8
76	90,6	6,6	77,4
101	116,1	6,6	102,9

BOCC. LISCIO MR.
EG. LINER
DOUILLE DR.
CASQUILLO RACOR MR.

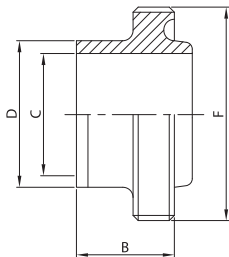
111 B



DN	A	B	C	D	gr
25	41,2	20,0	25,4	32,5	60
38	53,9	24,0	38,1	45,2	95
51	66,7	28,0	50,8	58,0	140
63	79,4	32,0	63,5	70,6	200
76	92,0	32,0	76,2	83,3	240
101	117,0	32,0	101,6	109,0	360

BOCC. FILETTATO SR.
WG. MALE PART
NEZ FILETÉ SR. LONG
MACHO RACOR SR.

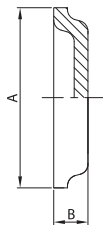
102 B



DN	B	C	D	F	gr
25	31,7	22,1	25,4	46-8	115
38	31,7	34,8	38,1	58-8	160
51	31,7	47,5	50,8	73-6	240
63	31,7	60,2	63,5	85-6	280
76	31,7	72,9	76,2	98-6	350
101	31,7	97,6	101,6	123-6	540

TAPPO LISCIO STAMPATO
BLANK PRESSED LINER
OBTURATEUR ESTAMPÉ
C. R. CIEGO ESTAMPADO

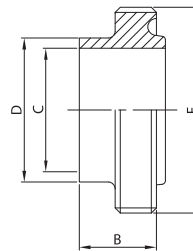
118 B



DN	A	B	gr
25	41,2	7,5	25
38	53,9	7,5	40
51	66,7	7,5	60
63	79,4	8,7	90
76	92,0	8,7	115
101	117,0	8,7	225

BOCC. FILETT. CORTO SR.
WG. SHORT MALE PART
NEZ FILETÉ SR. COURT
MACHO R. CORTO SR.

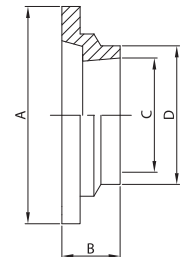
103 B



DN	B	C	D	F	gr
25	23,7	22,1	25,4	46-8	115
38	23,7	34,8	38,1	58-8	165
51	23,7	47,5	50,8	73-6	220
63	23,7	60,2	63,5	85-6	295
76	23,7	72,9	76,2	98-6	355
101	23,7	97,6	101,6	123-6	500

BOCC. LISCIO CORTO SR.
WG. SHORT LINER
DOUILLE SR. COURTE
CASQUILLO R. CORTO SR.

113 B

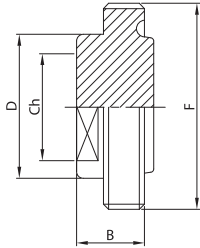


DN	A	B	C	D	gr
25	41,2	12,0	22,1	25,4	35
38	53,9	12,0	34,8	38,1	50
51	66,7	12,0	47,5	50,8	60
63	79,4	12,0	60,2	63,5	75
76	92,0	12,0	72,9	76,2	100
101	117,0	12,0	97,6	101,6	155



**TAPPO FILETTATO
BLANK MALE
OBTURATEUR FILETÉ
MACHO R. CIEGO**

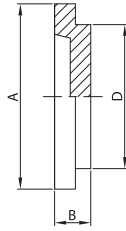
104 B



DN	B	Ch	D	F	gr
25	24,0	30,0	38,0	46-8	50
38	24,0	40,0	50,0	58-8	80
51	24,0	55,0	65,5	73-6	130
63	24,0	65,0	76,0	85-6	190
76	24,0	79,5	89,0	98-6	250
101	24,0	104,0	114,0	123-6	390

**TAPPO LISCIO
BLANK LINER
OBTURATEUR
CASQUILLO R. CIEGO**

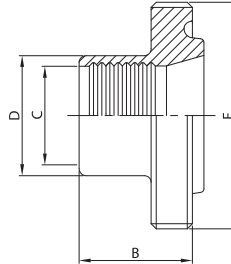
114 B



DN	A	B	D	gr
25	41,2	8,7	32,5	40
38	53,9	8,7	45,2	70
51	66,7	8,7	58,0	110
63	79,4	8,7	70,6	160
76	92,0	8,7	83,3	210
101	117,2	8,7	109,0	330

**RIDUZIONE FILETTATA MR.
EG. MALE REDUCER
NEZ FILETÉ RÉDUIT DR.
MACHO R. REDUCCIÓN MR.**

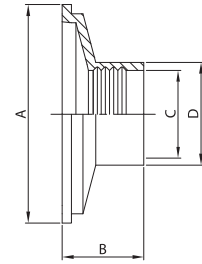
105 B



DN	B	C	D	F	gr
38/25	30,3	25,4	32,5	58-8	190
51/25	30,3	25,4	32,5	73-6	280
51/38	35,3	38,1	45,2	73-6	330
63/38	35,3	38,1	45,2	85-6	350
63/51	35,3	50,8	58,0	85-6	410
76/38	40,3	38,1	45,2	98-6	440
76/51	40,3	50,8	58,0	98-6	510
76/63	40,3	63,5	70,6	98-6	580
101/63	40,3	63,5	70,6	123-6	640
101/76	40,3	76,2	83,3	123-6	740

**RIDUZIONE LISCIA MR.
EG. LINER REDUCER
DOUILLE RÉDUITE DR.
CASQUILLO R. REDUC. MR.**

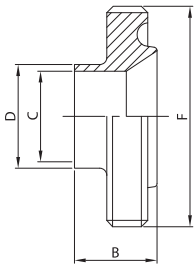
115 B



DN	A	B	C	D	gr
38/25	53,9	28,0	25,4	32,5	150
51/25	66,7	30,0	25,4	32,5	170
51/38	66,7	30,0	38,1	45,2	180
63/38	79,4	35,0	38,1	45,2	210
63/51	79,4	35,0	50,8	58,0	220
76/38	92,0	39,0	38,1	45,2	300
76/51	92,0	39,0	50,8	58,0	310
76/63	92,0	39,0	63,5	70,6	350
101/63	117,2	39,0	63,5	70,6	400
101/76	117,2	39,0	76,2	83,3	430

**RIDUZIONE FILETTATA SR.
WG. MALE REDUCER
NEZ FILETÉ RÉDUIT SR.
MACHO R. REDUCCIÓN SR.**

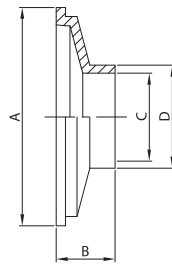
106 B



DN	B	C	D	F	gr
38/25	33,0	22,1	25,4	58-8	140
51/25	35,0	22,1	25,4	73-6	290
51/38	35,0	34,8	38,1	73-6	330
63/38	40,0	34,8	38,1	85-6	340
63/51	40,0	47,5	50,8	85-6	390
76/38	44,0	34,8	38,1	98-6	420
76/51	44,0	47,5	50,8	98-6	490
76/63	44,0	60,2	63,5	98-6	560
101/63	44,0	60,2	63,5	123-6	650
101/76	44,0	72,9	76,2	123-6	760

**RIDUZIONE LISCIA SR.
WG. LINER REDUCER
DOUILLE RÉDUITE SR.
CASQUILLO R. REDUC. SR.**

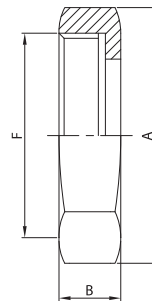
116 B



DN	A	B	C	D	gr
38/25	53,9	20,0	22,1	25,4	150
51/25	66,7	20,0	22,1	25,4	170
51/38	66,7	20,0	34,8	38,1	180
63/38	79,4	20,0	34,8	38,1	210
63/51	79,4	20,0	47,5	50,8	220
76/38	92,0	20,0	34,8	38,1	300
76/51	92,0	20,0	47,5	50,8	310
76/63	92,0	20,0	60,2	63,5	350
101/63	117,2	20,0	60,2	63,5	400
101/76	117,2	20,0	72,9	76,2	430

**GIRELLA ESAGONALE
HEX NUT
ÉCROU HEXAGONAL
TUERCA EXAGONAL**

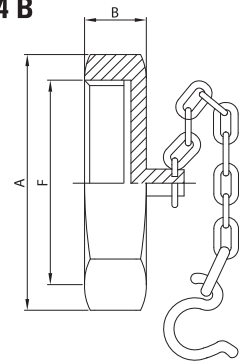
121 B



DN	A	B	F	gr
25	51,0	22,2	46-8	125
38	65,0	22,2	58-8	205
51	80,0	22,2	73-6	270
63	92,0	22,2	85-6	450
76	104,0	22,2	98-6	470
101	130,0	22,2	123-6	550

**GIRELLA CIECA + CAT.
ROUND NUT + CHAIN
ÉCROU BOUCHON + CH.
TUERCA CIEGA + CAD.**

124 B

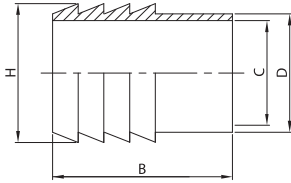


DN	A	B	F	gr
25	51,0	22,2	46-8	230
38	65,0	22,2	58-8	320
51	80,0	22,2	73-6	440
63	92,0	22,2	85-6	600
76	104,0	22,2	98-6	720
101	130,0	22,2	123-6	920



ATT. PORTAGOMMA EL.
HOSE CONNECTION PE.
MANCHON À LIGATURER
MANGUITO MANGUERA EL.

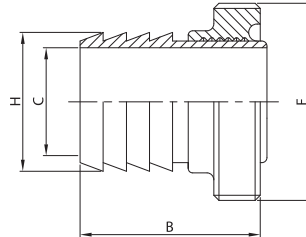
140 L



DN	B	C	D	H	gr
25	49,0	22,1	25,4	28,6	100
38	58,0	34,8	38,1	41,3	200
51	67,0	47,5	50,8	54,0	290
63	81,0	60,2	63,5	66,7	320
76	81,0	72,9	76,2	79,4	670
101	95,0	97,6	101,6	109,0	1.400

ATT. PORTAG. + BF. MT.
HOSE CONNECTION + MP. ED.
NEZ FILETÉ À LIGATURER
M. M. MACHO MD.

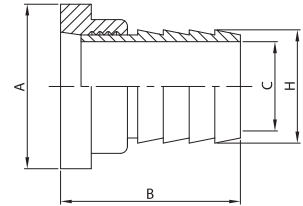
141 B



DN	B	C	F	H	gr
25	44,3	22,1	46-8	28,6	200
38	53,3	34,8	58-8	41,3	355
51	62,3	47,5	73-6	54,0	525
63	76,3	60,2	85-6	66,7	610
76	76,3	72,9	98-6	79,4	1.035
101	90,3	97,6	123-6	109,0	1.930

ATT. PORTAG. + BL. MT.
HOSE CONNECTION + L. ED.
DOUILLE À LIGATURER
M. M. CASQUILLO MD.

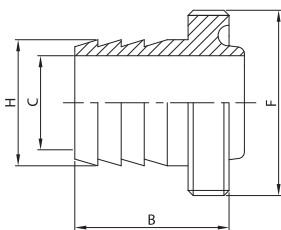
142 B



DN	A	B	C	H	gr
25	41,2	54,5	22,1	28,6	160
38	53,9	63,5	34,8	41,3	295
51	66,7	72,5	47,5	54,0	430
63	79,4	86,5	60,2	66,7	520
76	92,0	86,5	72,9	79,4	910
101	117,0	100,5	97,6	109,0	1.760

PORTAGOMMA EF.
HOSE CONNECTION ME.
PORTE C. NEZ FILETÉ
M. M. MACHO SR.

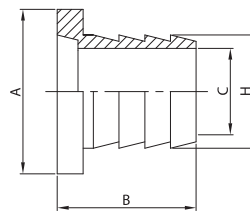
143 B



DN	B	C	F	H	gr
25	49,0	22,1	46-8	28,6	200
38	54,0	34,8	58-8	41,3	355
51	59,0	47,5	73-6	54,0	525
63	69,0	60,2	85-6	66,7	610
76	69,0	72,9	98-6	79,4	1.035
101	84,0	97,6	123-6	109,0	1.930

PORTAGOMMA EL.
HOSE CONNECTION PE.
PORTE C. DOUILLE
M. M. CASQUILLO SR.

144 B

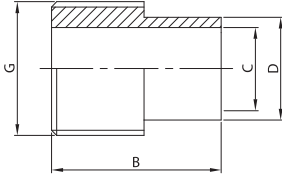


DN	A	B	C	H	gr
25	41,2	40,0	22,1	28,6	160
38	53,9	45,0	34,8	41,3	295
51	66,7	50,0	47,5	54,0	430
63	79,4	60,0	60,2	66,7	520
76	92,0	60,0	72,9	79,4	910
101	117,0	75,0	97,6	109,0	1.760



ATT. FILETTATO GAS EL.
BSP MALE CONNECTION PE.
PIÈCE FILETÉE GAS
ROSCA GAS EL.

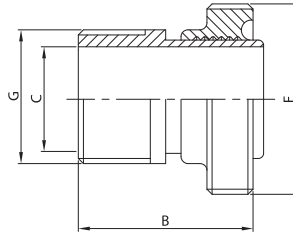
150 L



DN	B	C	D	G	gr
25	38,0	22,1	25,4	1"	70
38	45,0	34,8	38,1	1 1/2"	135
51	52,0	47,5	50,8	2"	200
63	60,0	60,2	63,5	2 1/2"	350
76	66,0	72,9	76,2	3"	540
101	75,0	97,6	101,6	4"	850

ATT. FILET. GAS + BF. MT.
BSP MALE CONN. + MP. ED.
PIÈCE FIL. GAS + NEZ FIL.
MACHO BS + M. GAS MD.

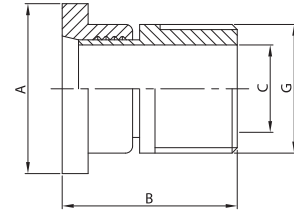
151 B



DN	B	C	F	G	gr
25	33,3	22,1	46-8	1"	160
38	40,3	34,8	58-8	1 1/2"	290
51	47,3	47,5	73-6	2"	435
63	55,3	60,2	85-6	2 1/2"	640
76	61,3	72,9	98-6	3"	905
101	70,3	97,6	123-6	4"	1.380

ATT. FILET. GAS + BL. MT.
BSP MALE CONN. + L. ED.
PIÈCE FIL. GAS + DOUILLE
C. BS + M. GAS MD.

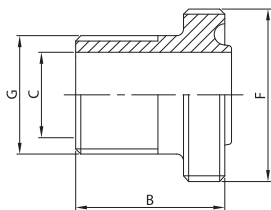
152 B



DN	A	B	C	G	gr
25	41,2	43,5	22,1	1"	130
38	53,9	50,5	34,8	1 1/2"	220
51	66,7	57,5	47,5	2"	340
63	79,4	65,5	60,2	2 1/2"	550
76	92,0	71,5	72,9	3"	780
101	117,0	80,5	97,6	4"	1.210

BOCC. FILETTATO EF. GAS
BSP MALE PART ME.
ADAPTATEUR NEZ FILETÉ
MACHO BS MACHO GAS

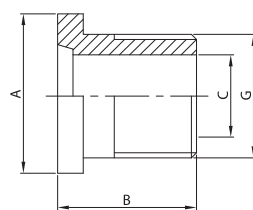
153 B



DN	B	C	F	G	gr
25	46,3	22,1	46-8	1"	160
38	46,3	34,8	58-8	1 1/2"	290
51	46,3	47,5	73-6	2"	435
63	46,3	60,2	85-6	2 1/2"	640
76	46,3	72,9	98-6	3"	905
101	46,3	97,6	123-6	4"	1.380

BOCC. LISCIO EF. GAS
BSP LINER ME.
ADAPTATEUR DOUILLE
CASQUILLO BS M. GAS

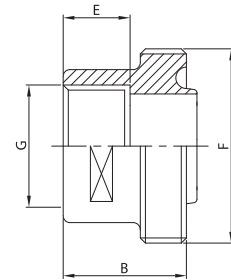
154 B



DN	A	B	C	G	gr
25	41,2	38,0	22,1	1"	130
38	53,9	38,0	34,8	1 1/2"	220
51	66,7	38,0	47,5	2"	340
63	79,4	38,0	60,2	2 1/2"	550
76	92,0	40,0	72,9	3"	780
101	117,0	40,0	97,6	4"	1.210

BOCC. FILET. D.I. FT. GAS
MALE PART I.D. T. BSP
ADAPT. NEZ FIL./FEM. GAS
MACHO BS HEMBRA GAS

161 B

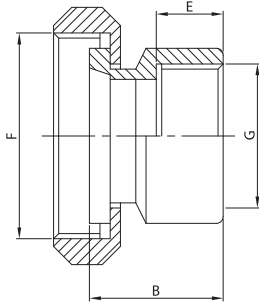


DN	B	E	F	G	gr
25	33,3	20,0	46-8	1"	100
38	36,3	22,0	58-8	1 1/2"	155
51	39,3	24,0	73-6	2"	235
63	39,3	26,0	85-6	2 1/2"	290
76	39,3	26,0	98-6	3"	365
101	39,3	26,0	123-6	4"	530



BL. + G. D.I. FT. GAS
L. + N. I.D. T. BSP
ADAPT. DOUILLE/FEM. GAS
C. + T. BS H. GAS

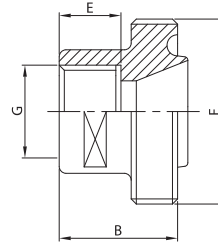
162 B



DN	B	E	F	G	gr
25	30,0	18,0	46-8	1"	230
38	34,0	18,0	58-8	1 1/2"	370
51	38,0	23,0	73-6	2"	470
63	42,0	23,0	85-6	2 1/2"	870
76	45,0	25,0	98-6	3"	1.060
101	45,0	25,0	123-6	4"	1.260

BOCC. FILET. D.I. FT. GAS
MALE PART I.D. T. BSP
ADAPT. NEZ FIL./FEM. GAS
M. BS H. GAS REDUCCIÓN

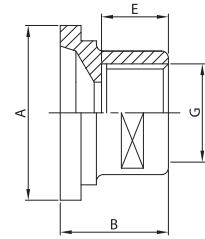
163 B



DN	B	E	F	G	gr
25	25,0	15,0	46-8	3/4"	120
38	29,0	15,0	58-8	1 1/4"	190
51	33,0	20,0	73-6	1 1/2"	280
63	37,0	20,0	85-6	2"	350
76	37,0	25,0	98-6	2 1/2"	440
101	37,0	25,0	123-6	3 1/2"	640

BOCC. LISCIO D.I. FT. GAS
LINER I.D. T. BSP
ADAPT. DOUILLE/FEM. GAS
C. BS H. GAS REDUCCIÓN

164 B



DN	A	B	E	G	gr
25	12,0	20,0	46-8	3/4"	60
38	15,0	24,0	58-8	1 1/4"	95
51	15,0	28,0	73-6	1 1/2"	140
63	20,0	32,0	85-6	2"	200
76	20,0	32,0	98-6	2 1/2"	240
101	20,0	32,0	123-6	3 1/2"	360