

RACCORDI

- Ricavati da particolari stampati a caldo o laminati e solubilizzati.
- Accurata lavorazione delle parti filettate per eliminare l'ingrippaggio durante gli accoppiamenti.
- Eliminazione delle parti finali delle filettature con operazioni meccaniche per evitare infortuni durante la manipolazione dei pezzi.
- Finitura standard: lucidatura esterna norme DIN; satinatura esterna norme SMS, BS, ISS.

UNIONS

- Made from hot-rolled or press-forged material and solution heat-treated.
- Precise machining of the threaded parts to eliminate seizure during coupling.
- Elimination of end parts of threading with mechanical operations to prevent accidents during handling of the pieces.
- Standard finish: external polishing to DIN standards; external glazing to SMS, BS, ISS standards.

RACCORDS

- Obtenus à partir de pièces moulées à chaud ou laminées et solubilisées.
- Usinage soigné des parties filetées pour éliminer le grippage pendant les assemblages.
- Elimination des parties finales des filetages à l'aide d'opérations mécaniques pour éviter les accidents pendant le maniement des pièces.
- Finissage standard: polissage extérieur normes DIN; satinage extérieur normes SMS, BS, ISS.

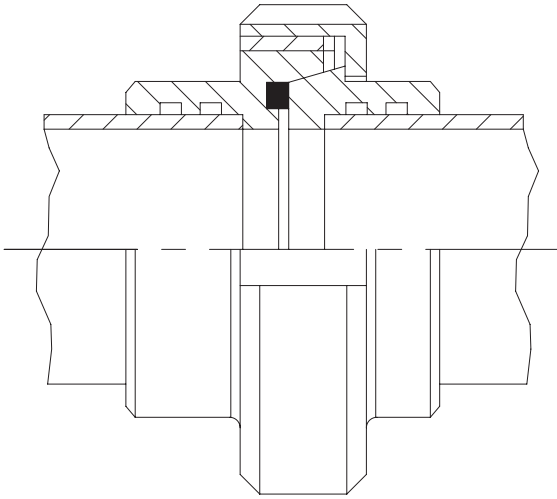
RACORES

- Obtenidos a partir de piezas estampadas en caliente o laminadas y solubilizadas.
- Cuidadosa elaboración de las piezas roscadas para eliminar el agarrotamiento durante los acoplamientos.
- Eliminación de las partes terminales de las roscas con operaciones mecánicas para evitar accidentes durante la manipulación de las piezas.
- Acabado estándar: pulido exterior normas DIN; satinado exterior normas SMS, BS, ISS.



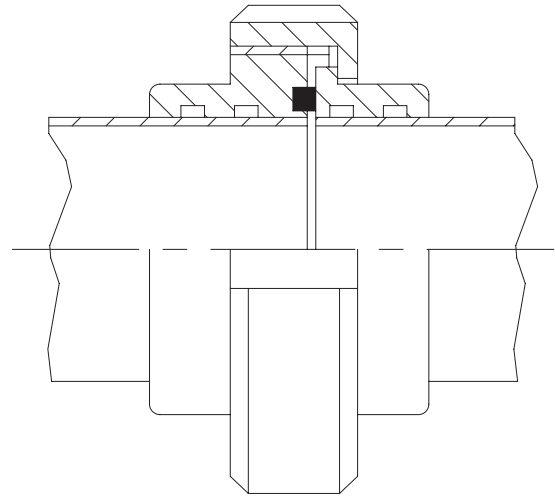
RACCORDO DIN
DIN UNION

RACCORD DIN
RACOR DIN



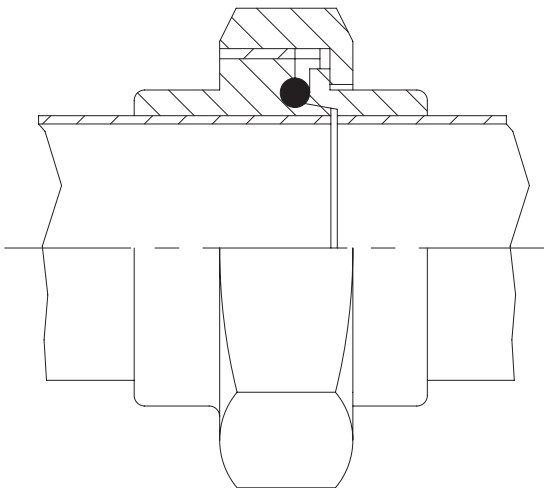
RACCORDO SMS
SMS UNION

RACCORD SMS
RACOR SMS



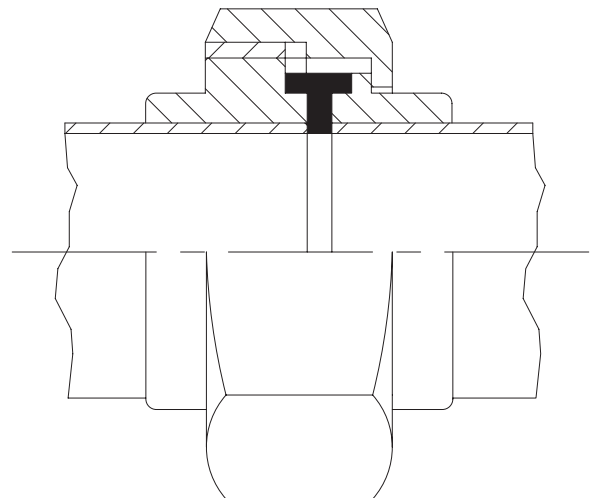
RACCORDO BS
BS UNION

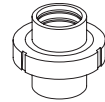
RACCORD BS
RACOR BS



RACCORDO ISS
ISS UNION

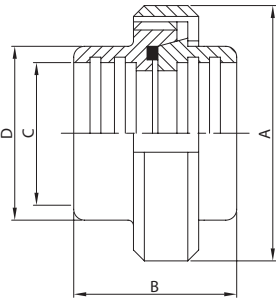
RACCORD ISS
RACOR ISS





**RACCORDO MR.
EG. UNION
RACCORD DR.
RACOR MR.**

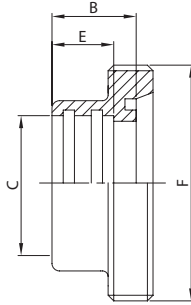
100 D



DN	A	B	C	D	gr
10	38,0	35,0	12,0	18,0	135
15	44,0	35,0	18,0	24,0	184
20	54,0	37,0	22,0	30,0	319
25	63,0	45,0	28,0	35,0	377
32	70,0	51,0	34,0	41,0	470
40	78,0	53,0	40,0	48,0	585
50	92,0	57,0	52,0	61,0	800
65	112,0	65,0	70,0	79,0	1.215
80	127,0	75,0	85,0	93,0	1.750
100	148,0	89,0	101,6	114,0	2.770
104	148,0	89,0	104,0	114,0	2.770

**BOCC. FILETTATO MR.
EG. MALE PART
NEZ FILETÉ DR.
MACHO RACOR MR.**

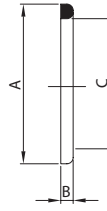
101 D



DN	B	C	E	F	gr
10	17,0	12,0	12,0	28-8	40
15	17,0	18,0	12,0	34-8	55
20	18,0	22,0	12,0	44-6	110
25	22,0	28,0	15,0	52-6	130
32	25,0	34,0	18,0	58-6	170
40	26,0	40,0	20,0	65-6	210
50	28,0	52,0	22,0	78-6	280
65	32,0	70,0	25,0	95-6	380
80	37,0	85,0	28,0	110-4	600
100	44,0	101,6	35,0	130-4	1.000
104	44,0	104,0	35,0	130-4	1.000

**GUARNIZIONE PER RACC.
SEAL RING FOR UNION
JOINT DE RACCORD
JUNTA RACOR**

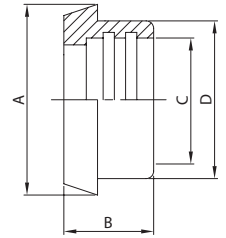
131 D



DN	A	B	C
10	20,0	4,0	12,0
15	26,0	4,0	18,0
20	33,0	4,0	23,0
25	40,0	5,0	30,0
32	46,0	5,0	36,0
40	52,0	5,0	42,0
50	64,0	5,0	54,0
65	81,0	5,0	71,0
80	95,0	5,0	85,0
100/104	114,0	5,0	104,0
125	142,0	6,0	130,0
150	167,0	6,0	155,0

**BOCC. CONICO MR.
EG. TAPER PART
DOUILLE DR.
CASQUILLO RACOR MR.**

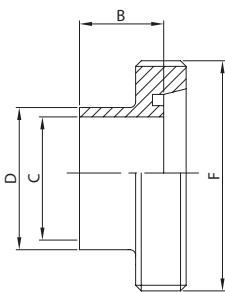
111 D



DN	A	B	C	D	gr
10	22,0	17,0	12,0	18,0	25
15	28,0	17,0	18,0	24,0	30
20	36,0	18,0	22,0	30,0	60
25	44,0	22,0	28,0	35,0	85
32	50,0	25,0	34,0	41,0	110
40	56,0	26,0	40,0	48,0	135
50	68,0	28,0	52,0	61,0	200
65	86,0	32,0	70,0	79,0	295
80	100,0	37,0	85,0	93,0	380
100	121,0	44,0	101,6	114,0	780
104	121,0	44,0	104,0	114,0	780

**BOCC. FILETTATO SR.
WG. MALE PART
NEZ FILETÉ SR.
MACHO RACOR SR.**

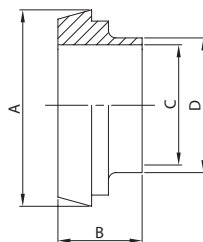
102 D



DN	B	C	D	F	gr
10	17,0	10,0	12,0	28-8	30
15	17,0	16,0	18,0	34-8	50
20	18,0	20,0	22,0	44-6	100
25	22,0	25,0	28,0	52-6	120
32	25,0	31,0	34,0	58-6	150
40	26,0	37,0	40,0	65-6	180
50	28,0	49,0	52,0	78-6	240
65	32,0	66,0	70,0	95-6	340
80	37,0	81,0	85,0	110-4	540
100	44,0	97,6	101,6	130-4	740
104	44,0	100,0	104,0	130-4	740

**BOCC. CONICO SR.
WG. TAPER PART
DOUILLE SR.
CASQUILLO RACOR SR.**

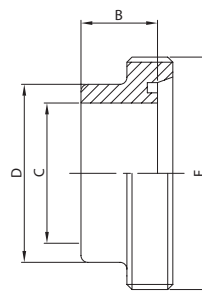
112 D



DN	A	B	C	D	gr
10	22,0	17,0	10,0	12,0	20
15	28,0	17,0	16,0	18,0	30
20	36,0	18,0	20,0	22,0	60
25	44,0	22,0	25,0	28,0	90
32	50,0	25,0	31,0	34,0	100
40	56,0	26,0	37,0	40,0	120
50	68,0	28,0	49,0	52,0	180
65	86,0	32,0	66,0	70,0	280
80	100,0	37,0	81,0	85,0	380
100	121,0	44,0	97,6	101,6	660
104	121,0	44,0	100,0	104,0	660

**BOCC. FILETT. GROSSO SP.
WG. MALE PART
NEZ FILETÉ SR.
MACHO R. ESPESO SR.**

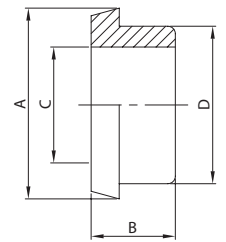
117 D



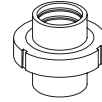
DN	B	C	D	F	gr
10	17,0	10,0	18,0	28-8	40
15	17,0	16,0	24,0	34-8	60
20	18,0	20,0	30,0	44-6	120
25	22,0	25,0	35,0	52-6	140
32	25,0	31,0	41,0	58-6	180
40	26,0	37,0	48,0	65-6	240
50	28,0	49,0	61,0	78-6	360
65	32,0	66,0	79,0	95-6	420
80	37,0	81,0	93,0	110-0	670
100	44,0	97,6	114,0	130-4	1.240
104	44,0	100,0	114,0	130-4	1.240
125	23,0	125,0	137,0	160-4	1.600
150	37,0	150,0	163,0	190-4	2.000

**BOCC. CONICO GROSSO SP.
WG. THICK TAPER PART
DOUILLE ÉPAISSE SR.
CASQUILLO R. ESPESO SR.**

119 D



DN	A	B	C	D	gr
10	22,0	17,0	10,0	18,0	30
15	28,0	17,0	16,0	24,0	40
20	36,0	18,0	20,0	30,0	70
25	44,0	22,0	25,0	35,0	100
32	50,0	25,0	31,0	41,0	140
40	56,0	26,0	37,0	48,0	180
50	68,0	28,0	49,0	61,0	230
65	86,0	32,0	66,0	79,0	360
80	100,0	37,0	81,0	93,0	500
100	121,0	44,0	97,6	114,0	910
104	121,0	44,0	100,0	114,0	910
125	150,0	23,0	125,0	137,0	1.300
150	176,0	37,0	150,0	163,0	1.800



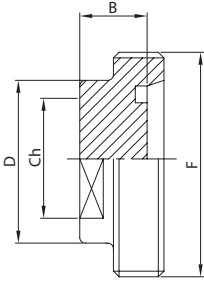
**TAPPO FILETTATO
BLANK MALE
OBTURATEUR FILETÉ
MACHO R. CIEGO**

**TAPPO CONICO
TAPER BLANK
OBTURATEUR
CASQUILLO R. CIEGO**

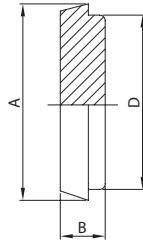
**RIDUZIONE FILETTATA MR.
EG. MALE REDUCER
NEZ FILETÉ RÉDUIT DR.
MACHO R. REDUCCIÓN MR.**

**RIDUZIONE CONICA MR.
EG. TAPER REDUCER
DOUILLE RÉDUITE DR.
CASQUILLO R. REDUC. MR.**

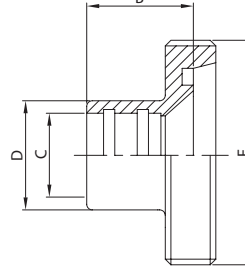
104 D



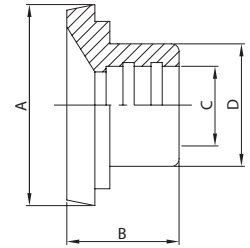
114 D



105 D



115 D



DN	B	Ch	D	F	gr
10	18,0	13,0	18,0	28-8	30
15	18,0	19,0	24,0	34-8	50
20	18,0	24,0	30,0	44-6	100
25	17,0	27,0	35,0	52-6	240
32	17,0	32,0	41,0	58-6	290
40	17,0	40,0	48,0	65-6	370
50	17,0	50,0	61,0	78-6	530
65	18,0	65,0	79,0	95-6	800
80	22,0	80,0	93,0	110-4	1.050
100	20,0	100,0	114,0	130-4	1.870

DN	A	B	D	gr
10	22,0	10,0	18,0	25
15	28,0	10,0	24,0	42
20	36,0	12,0	30,0	85
25	44,0	14,0	35,0	140
32	50,0	14,0	41,0	180
40	56,0	14,0	48,0	230
50	68,0	15,0	61,0	380
65	86,0	17,0	79,0	700
80	100,0	17,0	93,0	970
100	121,0	21,0	114,0	1.750
125	150,0	24,0	137,0	3.120
150	176,0	25,0	163,0	4.450

DN	B	C	D	F	gr
32/25	21,0	28,0	35,0	58-6	150
40/25	21,0	28,0	35,0	65-6	200
40/32	23,0	34,0	41,0	65-6	200
50/25	27,0	28,0	35,0	78-6	260
50/32	27,0	34,0	41,0	78-6	340
50/40	28,0	40,0	48,0	78-6	300
65/40	28,0	40,0	48,0	95-6	440
65/50	32,0	52,0	61,0	95-6	460
80/65	34,0	70,0	79,0	110-4	720
100/80	35,0	85,0	93,0	130-4	1.200

DN	A	B	C	D	gr
32/25	50,0	25,0	28,0	35,0	140
40/25	56,0	25,0	28,0	35,0	180
40/32	56,0	28,0	34,0	41,0	180
50/25	68,0	28,0	28,0	35,0	280
50/32	68,0	28,0	34,0	41,0	280
50/40	68,0	31,0	40,0	48,0	300
65/40	86,0	32,0	40,0	48,0	500
65/50	86,0	33,0	52,0	61,0	500
80/65	100,0	38,0	70,0	79,0	540
100/80	121,0	41,0	85,0	93,0	980

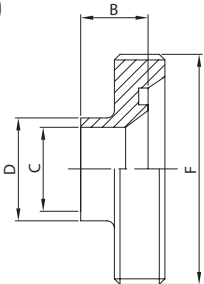
**RIDUZIONE FILETTATA SR.
WG. MALE REDUCER
NEZ FILETÉ RÉDUIT SR.
MACHO R. REDUCCIÓN SR.**

**RIDUZIONE CONICA SR.
WG. TAPER REDUCER
DOUILLE RÉDUITE SR.
CASQUILLO R. REDUC. SR.**

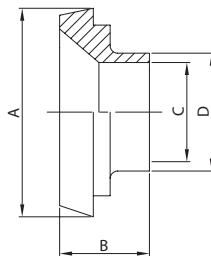
**GIRELLA
ROUND NUT
ÉCROU
TUERCA**

**GIRELLA CIECA + CAT.
ROUND NUT + CHAIN
ÉCROU BOUCHON + CH.
TUERCA CIEGA + CAD.**

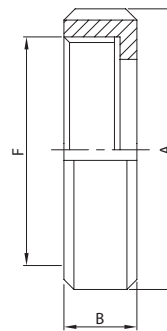
106 D



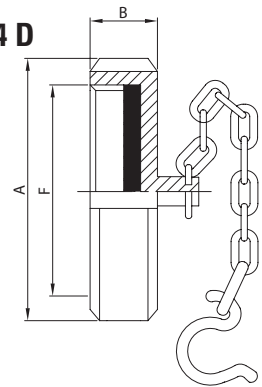
116 D



121 D



124 D

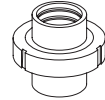


DN	B	C	D	F	gr
32/28	23,0	25,0	28,0	58-6	160
40/28	23,0	25,0	28,0	65-6	210
40/34	25,0	31,0	34,0	65-6	220
50/28	25,0	25,0	28,0	78-6	220
50/34	25,0	31,0	34,0	78-6	330
50/40	25,0	37,0	40,0	78-6	330
65/40	28,0	37,0	40,0	95-6	460
65/52	29,0	49,0	52,0	95-6	610
80/70	33,0	66,0	70,0	110-4	840
100/85	35,0	81,0	85,0	130-4	1.250

DN	A	B	C	D	gr
32/28	50,0	18,0	25,0	28,0	135
40/28	56,0	18,0	25,0	28,0	185
40/34	56,0	18,0	31,0	34,0	200
50/28	68,0	19,0	25,0	28,0	285
50/34	68,0	19,0	31,0	34,0	275
50/40	68,0	19,0	37,0	40,0	280
65/40	86,0	21,0	37,0	40,0	515
65/52	86,0	21,0	49,0	52,0	480
80/70	100,0	21,0	66,0	70,0	625
100/85	121,0	25,0	81,0	85,0	880

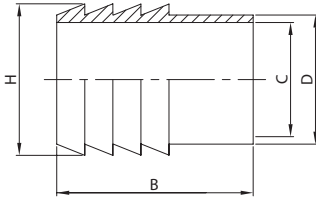
DN	A	B	F	gr
10	38,0	18,0	28-8	70
15	44,0	18,0	34-8	98
20	54,0	21,0	44-6	150
25	63,0	21,0	52-6	160
32	70,0	21,0	58-6	190
40	78,0	21,0	65-6	240
50	92,0	22,0	78-6	320
65	112,0	25,0	95-6	540
80	127,0	30,0	110-4	770
100	148,0	31,0	130-4	990
125	178,0	35,0	160-4	1.400
150	210,0	41,0	190-4	1.800

DN	A	B	F	gr
10	38,0	18,0	28-8	100
15	44,0	18,0	34-8	120
20	54,0	21,0	44-6	180
25	63,0	21,0	52-6	200
32	70,0	21,0	58-6	250
40	78,0	21,0	65-6	290
50	92,0	22,0	78-6	370
65	112,0	25,0	95-6	700
80	127,0	30,0	110-4	970
100	148,0	31,0	130-4	1.400
125	178,0	35,0	160-4	1.800
150	210,0	41,0	190-4	2.200



ATT. PORTAGOMMA EL.
HOSE CONNECTION PE.
MANCHON À LIGATURER
MANGUITO MANGUERA EL.

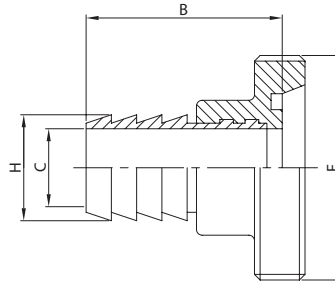
140 L



DN	B	C	D	H	gr
28	42,0	25,0	28,0	34,0	80
34	45,0	31,0	34,0	40,0	105
40	52,0	37,0	40,0	46,0	145
52	59,0	49,0	52,0	58,0	210
70	72,0	66,0	70,0	76,0	380
85	73,0	81,0	85,0	93,0	570
101	95,0	97,6	101,6	114,0	1.400

ATT. PORTAG. + BF. MT.
HOSE CONNECTION + MP ED.
NEZ FILETÉ À LIGATURER
M. M. MACHO MD.

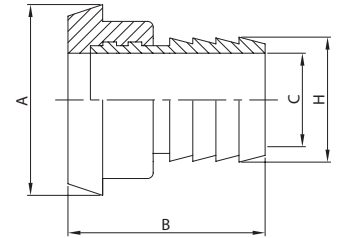
141 D



DN	B	C	F	H	gr
25	49,0	25,0	52-6	34,0	212
32	52,0	31,0	58-6	40,0	275
40	58,0	37,0	65-6	46,0	355
50	65,0	49,0	78-6	58,0	490
65	79,0	66,0	95-6	76,0	760
80	82,0	81,0	110-4	93,0	1.170
100	104,0	97,6	130-4	114,0	2.400

ATT. PORTAG. + BC. MT.
HOSE CONNECTION + TP. ED.
DOUILLE À LIGATURER
M. M. CASQUILLO MD.

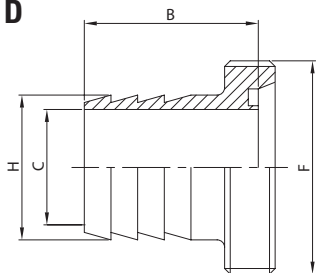
142 D



DN	A	B	C	H	gr
25	44,0	49,0	25,0	34,0	165
32	50,0	52,0	31,0	40,0	215
40	56,0	58,0	37,0	46,0	280
50	68,0	65,0	49,0	58,0	410
65	86,0	79,0	66,0	76,0	675
80	100,0	82,0	81,0	93,0	950
100	121,0	104,0	97,6	114,0	2.180

PORTAGOMMA EF.
HOSE CONNECTION ME.
PORTE C. NEZ FILETÉ
M. M. MACHO SR.

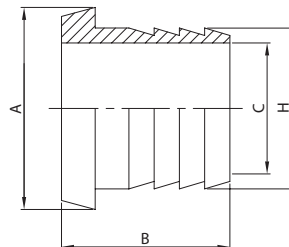
143 D



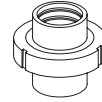
DN	B	C	F	H	gr
10	38,0	10,0	28-8	18,0	80
15	38,0	16,0	34-8	24,0	115
20	38,0	20,0	44-6	30,0	180
25	37,0	25,0	52-6	34,0	212
32	37,0	31,0	58-6	40,0	275
40	42,0	37,0	65-6	46,0	355
50	47,0	49,0	78-6	58,0	490
65	58,0	66,0	95-6	76,0	760
80	62,0	81,0	110-4	93,0	1.170
100	77,0	97,6	130-4	114,0	2.400

PORTAGOMMA EC.
HOSE CONNECTION TE.
PORTE C. DOUILLE
M. M. CASQUILLO SR.

144 D

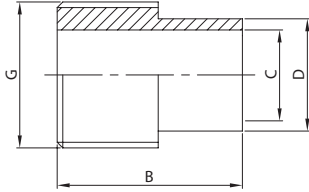


DN	A	B	C	H	gr
10	22,0	36,0	10,0	18,0	65
15	28,0	36,0	16,0	24,0	90
20	36,0	38,0	20,0	30,0	140
25	44,0	40,0	25,0	34,0	165
32	50,0	40,0	31,0	40,0	215
40	56,0	45,0	37,0	46,0	280
50	68,0	51,0	49,0	58,0	410
65	86,0	62,0	66,0	76,0	675
80	100,0	62,0	81,0	93,0	950
100	121,0	80,0	97,6	114,0	2.180



ATT. FILETTATO GAS EL.
BSP MALE CONNECTION PE.
PIÈCE FILETÉE GAS
ROSCA GAS EL.

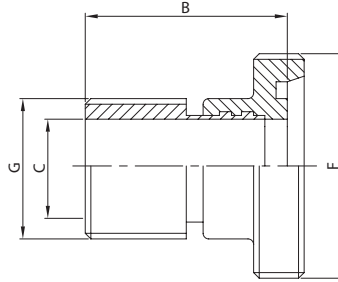
150 L



DN	B	C	D	G	gr
28	30,0	25,0	28,0	1"	45
34	33,0	31,0	34,0	1 1/4"	80
40	38,0	37,0	40,0	1 1/2"	110
52	43,0	49,0	52,0	2"	195
70	50,0	66,0	70,0	2 1/2"	240
85	58,0	81,0	85,0	3"	320
101	75,0	97,6	101,6	4"	850

ATT. FILETTATO GAS + BF. MT.
BSP MALE CONN. + MP. ED.
PIÈCE FIL. GAS + NEZ FIL.
MACHO DIN + M. GAS MD.

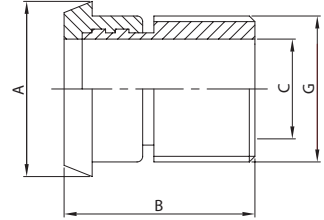
151 D



DN	B	C	F	G	gr
25	37,0	25,0	52-6	1"	177
32	40,0	31,0	58-6	1 1/4"	250
40	44,0	37,0	65-6	1 1/2"	320
50	49,0	49,0	78-6	2"	475
65	57,0	66,0	95-6	2 1/2"	620
80	67,0	81,0	110-4	3"	920
100	84,0	97,6	130-4	4"	1.850

ATT. FILETTATO GAS + BC. MT.
BSP MALE CONN. + TP. ED.
PIÈCE FIL. GAS + DOUILLE
C. DIN + M. GAS MD.

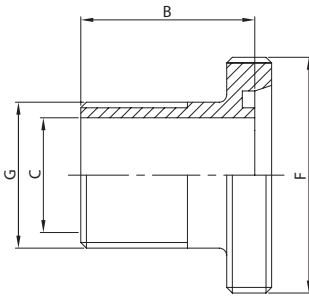
152 D



DN	A	B	C	G	gr
25	44,0	37,0	25,0	1"	130
32	50,0	40,0	31,0	1 1/4"	190
40	56,0	44,0	37,0	1 1/2"	245
50	68,0	49,0	49,0	2"	395
65	86,0	57,0	66,0	2 1/2"	535
80	100,0	67,0	81,0	3"	700
100	121,0	84,0	97,6	4"	1.630

BOCC. FILETTATO EF. GAS
BSP MALE PART ME.
ADAPTATEUR NEZ FILETÉ
MACHO DIN MACHO GAS

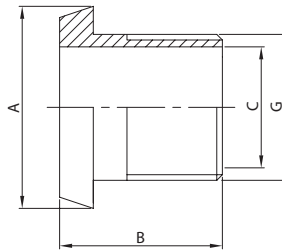
153 D



DN	B	C	F	G	gr
25	43,0	25,0	52-6	1"	177
32	43,0	31,0	58-6	1 1/4"	250
40	43,0	37,0	65-6	1 1/2"	320
50	43,0	49,0	78-6	2"	475
65	44,0	66,0	95-6	2 1/2"	620
80	48,0	81,0	110-4	3"	920
100	46,0	97,6	130-4	4"	1.850

BOCC. CONICO EF. GAS
BSP TAPER PART ME.
ADAPTATEUR DOUILLE
CASQUILLO DIN M. GAS

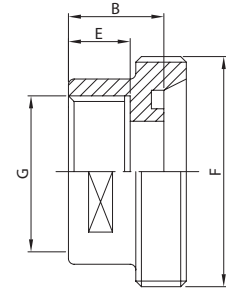
154 D



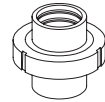
DN	A	B	C	G	gr
25	44,0	43,0	25,0	1"	130
32	50,0	43,0	31,0	1 1/4"	190
40	56,0	43,0	37,0	1 1/2"	245
50	68,0	44,0	49,0	2"	395
65	86,0	46,0	66,0	2 1/2"	535
80	100,0	46,0	81,0	3"	700
100	121,0	50,0	97,6	4"	1.630

BOCC. FILETT. D.I. FT. GAS
MALE PART I.D. T. BSP
ADAPT. NEZ FIL./FEM. GAS
MACHO DIN HEMBRA GAS

161 D

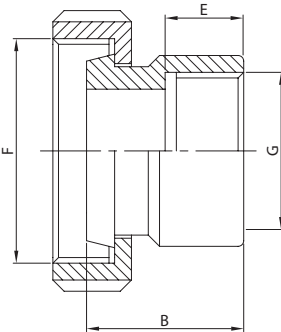


DN	B	E	F	G	gr
25	24,0	17,0	52-6	1"	220
32	28,0	17,0	58-6	1 1/4"	270
40	28,0	22,0	65-6	1 1/2"	320
50	33,0	22,0	78-6	2"	400
65	34,0	24,0	95-6	2 1/2"	510
80	37,0	27,0	110-4	3"	740
100	42,0	32,0	130-4	4"	1.150



BC. + G. D.I. FT. GAS
TP. + N. I.D. T. BSP
ADAPT. DOUILLE/FEM. GAS
C. + T. DIN H. GAS

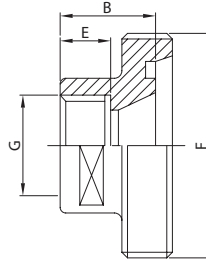
162 D



DN	B	E	F	G	gr
25	32,0	17,0	52-6	1"	325
32	35,0	17,0	58-6	1 1/4"	410
40	37,0	22,0	65-6	1 1/2"	500
50	41,0	22,0	78-6	2"	850
65	46,0	24,0	95-6	2 1/2"	1.245
80	49,0	27,0	110-4	3"	1.640
100	60,0	32,0	130-4	4"	2.200

BOCC. FILETT. D.I. FT. GAS
MALE PART I.D. T. BSP
ADAPT. NEZ FIL./FEM. GAS
MACHO DIN HEMBRA GAS

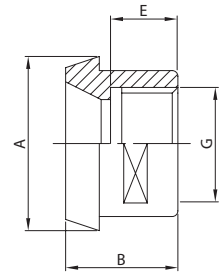
163 D



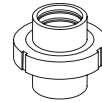
DN	B	E	F	G	gr
25	24,0	17,0	52-6	3/4"	50
32	28,0	17,0	58-6	1"	65
40	28,0	22,0	65-6	1 1/4"	120
50	33,0	22,0	78-6	1 1/2"	140
65	34,0	24,0	95-6	2"	180
80	37,0	27,0	110-4	2 1/2"	220
100	42,0	32,0	130-4	3 1/2"	290

BOCC. CONICO D.I. FT. GAS
TAPER PART I.D. T. BSP
ADAPT. DOUILLE/FEM. GAS
C. DIN H. GAS REDUCCIÓN

164 D



DN	A	B	E	G	gr
25	44,0	22,0	17,0	3/4"	95
32	50,0	25,0	17,0	1"	120
40	56,0	26,0	22,0	1 1/4"	145
50	68,0	28,0	22,0	1 1/2"	210
65	86,0	32,0	24,0	2"	305
80	100,0	37,0	27,0	2 1/2"	390
100	121,0	44,0	32,0	3 1/2"	790



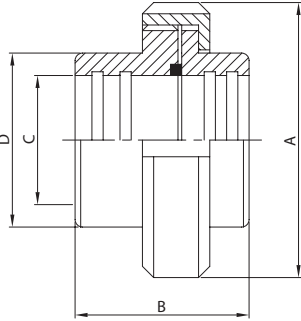
**RACCORDO MR.
EG. UNION
RACCORD DR.
RACOR MR.**

**BOCC. FILETTATO MR.
EG. MALE PART
NEZ FILETÉ DR.
MACHO RACOR MR.**

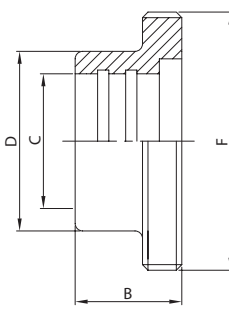
**GUARNIZIONE PER RACC.
SEAL RING FOR UNION
JOINT DE RACCORD
JUNTA RACOR**

**BOCC. LISCIO MR.
EG. LINER
DOUILLE DR.
CASQUILLO RACOR MR.**

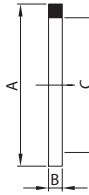
100 S



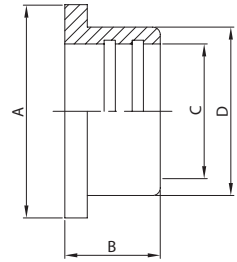
101 S



131 S



111 S



DN	A	B	C	D	gr
25	51,0	38,0	25,4	32,0	225
38	74,0	44,0	38,1	48,0	590
51	84,0	46,0	50,8	61,0	660
63	100,0	56,0	63,5	73,5	1.100
76	114,0	66,0	76,2	86,0	1.450
101	154,0	61,0	101,6	116,0	2.860
104	140,0	61,0	104,0	112,0	1.700

DN	B	C	D	F	gr
25	20,0	25,4	32,0	40-6	70
38	23,0	38,1	48,0	60-6	200
51	25,0	50,8	61,0	70-6	225
63	30,0	63,5	73,5	85-6	390
76	35,0	76,2	86,0	98-6	500
101	30,0	101,6	116,0	132-6	1.140
104	30,0	104,0	112,0	125-4	540

DN	A	B	C
25	32,0	5,5	25,4
38	48,0	5,5	38,1
51	61,0	5,5	50,8
63	73,5	5,5	63,5
76	86,0	5,5	76,0
101	113,5	5,5	101,5
104	116,0	5,5	104,0

DN	A	B	C	D	gr
25	35,5	17,0	25,4	32,0	45
38	55,0	20,0	38,1	48,0	120
51	65,0	20,0	50,8	61,0	135
63	80,0	25,0	63,5	73,5	220
76	93,0	30,0	76,2	86,0	310
101	127,0	30,0	101,6	116,0	740
104	118,0	30,0	104,0	112,0	400

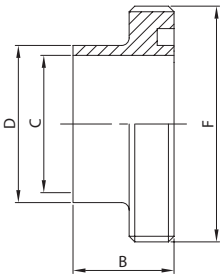
**BOCC. FILETTATO SR.
WG. MALE PART
NEZ FILETÉ SR. LONG
MACHO RACOR SR.**

**BOCC. LISCIO SR.
WG. LINER
DOUILLE SR. LONGUE
CASQUILLO RACOR SR.**

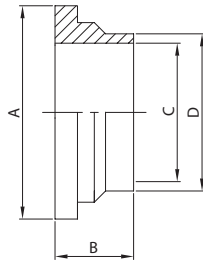
**BOCC. FILETT. CORTO SR.
WG. SHORT MALE PART
NEZ FILETÉ SR. COURT
MACHO R. CORTO SR.**

**BOCC. LISCIO CORTO SR.
WG. SHORT LINER
DOUILLE SR. COURTE
CASQUILLO R. CORTO SR.**

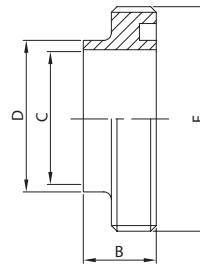
102 S



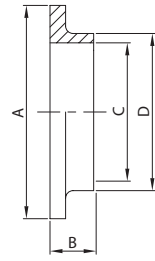
112 S



103 S



113 S

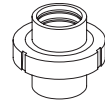


DN	B	C	D	F	gr
25	20,0	22,4	25,4	40-6	65
38	23,0	35,1	38,1	60-6	190
51	25,0	47,8	50,8	70-6	200
63	30,0	60,5	63,5	85-6	370
76	35,0	72,9	76,2	98-6	480
101	30,0	97,6	101,6	132-6	1.000
104	30,0	100,0	104,0	125-4	600

DN	A	B	C	D	gr
25	35,5	17,0	22,4	25,4	20
38	55,0	20,0	35,1	38,1	80
51	65,0	20,0	47,8	50,8	100
63	80,0	25,0	60,5	63,5	180
76	93,0	30,0	72,9	76,2	240
101	127,0	32,0	97,6	101,6	560
104	118,0	30,0	100,0	104,0	340

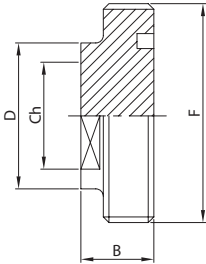
DN	B	C	D	F	gr
25	15,0	22,4	25,4	40-6	60
38	20,0	35,1	38,1	60-6	180
51	20,0	47,8	50,8	70-6	190
63	24,0	60,5	63,5	85-6	350
76	24,0	72,9	76,2	98-6	460
101	25,0	97,6	101,6	132-6	900
104	25,0	100,0	104,0	125-4	550

DN	A	B	C	D	gr
25	35,5	7,5	22,4	25,4	30
38	55,0	9,0	35,1	38,1	75
51	65,0	9,0	47,8	50,8	80
63	80,0	9,0	60,5	63,5	85
76	93,0	10,0	72,9	76,2	145
101	127,0	12,0	97,6	101,6	290
104	118,0	12,0	100,0	104,0	180



**TAPPO FILETTATO
BLANK MALE
OBTURATEUR FILETÉ
MACHO R. CIEGO**

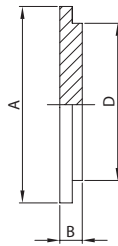
104 S



DN	B	Ch	D	F	gr
25	19,0	25,0	32,0	40-6	130
38	23,0	42,0	48,0	60-6	350
51	23,0	50,0	61,0	70-6	590
63	27,0	60,0	73,5	85-6	1.050
76	27,0	72,0	86,0	98-6	1.450
101	28,0	100,0	116,0	132-6	2.810
104	28,0	100,0	112,0	125-4	2.580

**TAPPO LISCIO
BLANK LINER
OBTURATEUR
CASQUILLO R. CIEGO**

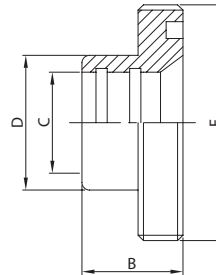
114 S



DN	A	B	D	gr
25	35,5	7,5	32,0	60
38	55,0	8,0	48,0	140
51	65,0	9,0	61,0	220
63	80,0	9,0	73,5	320
76	93,0	11,0	86,0	530
101	127,0	13,0	116,0	1.160
104	118,0	13,0	112,0	1.060

**RIDUZIONE FILETTATA MR.
EG. MALE REDUCER
NEZ FILETÉ RÉDUIT DR.
MACHO R. REDUCCIÓN MR.**

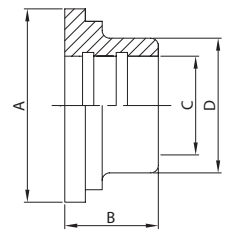
105 S



DN	B	C	D	F	gr
38/25	23,0	25,4	32,0	60-6	240
51/25	25,0	25,4	32,0	70-6	270
51/38	25,0	38,1	48,0	70-6	310
63/38	30,0	38,1	48,0	85-6	470
63/51	30,0	50,8	61,0	85-6	550
76/38	30,0	38,1	48,0	98-6	600
76/51	35,0	50,8	61,0	98-6	700
76/63	35,0	63,5	73,5	98-6	800
101/63	35,0	63,5	73,5	132-6	1.370
101/76	35,0	76,2	86,0	132-6	1.590

**RIDUZIONE LISCIA MR.
EG. LINER REDUCER
DOUILLE RÉDUITE DR.
CASQUILLO R. REDUC. MR.**

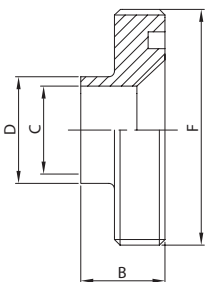
115 S



DN	A	B	C	D	gr
38/25	55,0	17,0	25,4	32,0	120
51/25	65,0	17,0	25,4	32,0	190
51/38	65,0	20,0	38,1	48,0	185
63/38	80,0	20,0	38,1	48,0	280
63/51	80,0	20,0	50,8	61,0	260
76/38	93,0	20,0	38,1	48,0	600
76/51	93,0	20,0	50,8	61,0	400
76/63	93,0	25,0	63,5	73,5	580
101/63	127,0	25,0	63,5	73,5	780
101/76	127,0	30,0	76,2	86,0	700

**RIDUZIONE FILETTATA SR.
WG. MALE REDUCER
NEZ FILETÉ RÉDUIT SR.
MACHO R. REDUCCIÓN SR.**

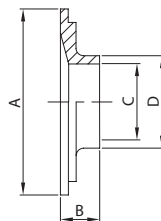
106 S



DN	B	C	D	F	gr
38/25	19,0	22,4	25,4	60-6	230
51/25	20,0	22,4	25,4	70-6	240
51/38	20,0	35,1	38,1	70-6	280
63/38	24,0	35,1	38,1	85-6	440
63/51	24,0	47,8	50,8	85-6	520
76/38	24,0	35,1	38,1	98-6	580
76/51	24,0	47,8	50,8	98-6	670
76/63	24,0	60,5	63,5	98-6	770
101/63	26,0	60,5	63,5	132-6	1.200
101/76	26,0	72,9	76,2	132-6	1.400

**RIDUZIONE LISCIA SR.
WG. LINER REDUCER
DOUILLE RÉDUITE SR.
CASQUILLO R. REDUC. SR.**

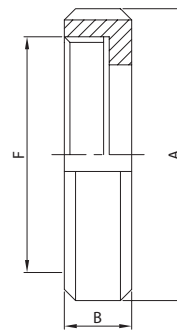
116 S



DN	A	B	C	D	gr
38/25	55,0	17,0	22,4	25,4	80
51/25	65,0	17,0	22,4	25,4	120
51/38	65,0	20,0	35,1	38,1	100
63/38	80,0	20,0	35,1	38,1	160
63/51	80,0	20,0	47,8	50,8	130
76/38	93,0	20,0	35,1	38,1	290
76/51	93,0	20,0	47,8	50,8	240
76/63	93,0	20,0	60,5	63,5	200
101/63	127,0	25,0	60,5	63,5	550
101/76	127,0	30,0	72,9	76,2	490

**GIRELLA
ROUND NUT
ÉCROU
TUERCA**

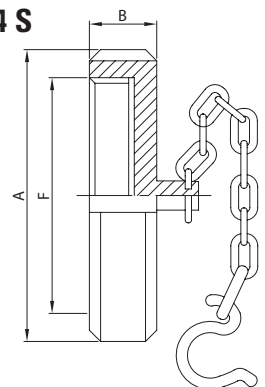
121 S



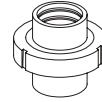
DN	A	B	F	gr
25	51,0	20,0	40-6	110
38	74,0	25,0	60-6	270
51	84,0	26,0	70-6	300
63	100,0	30,0	85-6	490
76	114,0	32,0	98-6	640
101	150,0	32,0	132-6	980
104	140,0	30,0	125-4	780

**GIRELLA CIECA + CAT.
ROUND NUT + CHAIN
ÉCROU BOUCHON + CH.
TUERCA CIEGA + CAD.**

124 S

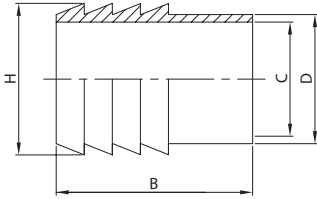


DN	A	B	F	gr
25	51,0	20,0	40-6	190
38	74,0	25,0	60-6	430
51	84,0	26,0	70-6	540
63	100,0	30,0	85-6	840
76	114,0	32,0	98-6	1.200
101	150,0	32,0	132-6	2.200
104	140,0	30,0	125-4	2.000



ATT. PORTAGOMMA EL.
HOSE CONNECTION PE.
MANCHON À LIGATURER
MANGUITO MANGUERA EL.

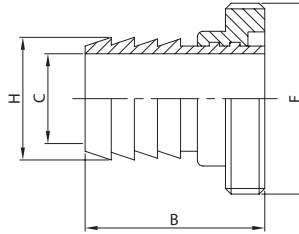
140 L



DN	B	C	D	H	gr
25	49,0	22,4	25,4	28,6	100
38	58,0	35,1	38,1	41,3	200
51	67,0	47,8	50,8	54,0	290
63	81,0	60,5	63,5	66,7	320
76	81,0	72,9	76,2	79,4	670
101	95,0	97,6	101,6	109,0	1.400

ATT. PORTAG. + BF. MT.
HOSE CONNECTION + MP ED.
NEZ FILETÉ À LIGATURER
M. M. MACHO MD.

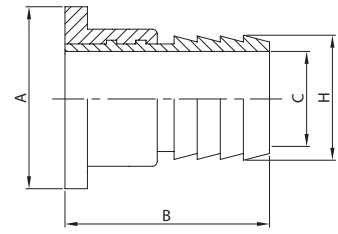
141 S



DN	B	C	F	H	gr
25	49,0	22,4	40-6	28,6	170
38	58,0	35,1	60-6	41,3	400
51	67,0	47,8	70-6	54,0	515
63	81,0	60,5	85-6	66,7	710
76	81,0	72,9	98-6	79,4	1.170
101	95,0	97,6	132-6	109,0	2.540

ATT. PORTAG. + BL. MT.
HOSE CONNECTION + L. ED.
DOUILLE À LIGATURER
M. M. CASQUILLO MD.

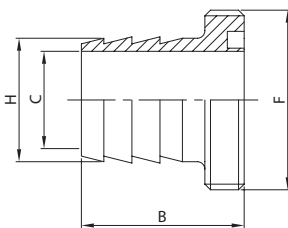
142 S



DN	A	B	C	H	gr
25	35,5	49,0	22,4	28,6	155
38	55,0	58,0	35,1	41,3	320
51	65,0	67,0	47,8	54,0	425
63	80,0	81,0	60,5	66,7	540
76	93,0	81,0	72,9	79,4	980
101	127,0	95,0	97,6	109,0	2.140

PORTAGOMMA EF.
HOSE CONNECTION ME.
PORTE C. NEZ FILETÉ
M. M. MACHO SR.

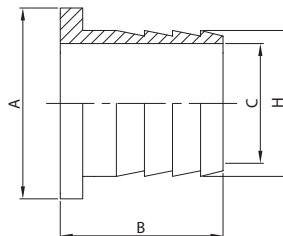
143 S



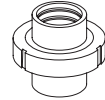
DN	B	C	F	H	gr
25	41,0	22,4	40-6	28,6	170
38	50,0	35,1	60-6	41,3	400
51	55,0	47,8	70-6	54,0	515
63	69,0	60,5	85-6	66,7	710
76	69,0	72,9	98-6	79,4	1.170
101	85,0	97,6	132-6	109,0	2.540

PORTAGOMMA EL.
HOSE CONNECTION PE.
PORTE C. DOUILLE
M. M. CASQUILLO SR.

144 S

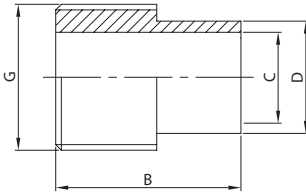


DN	A	B	C	H	gr
25	35,5	33,5	22,4	28,6	145
38	55,0	39,0	35,1	41,3	320
51	65,0	44,0	47,8	54,0	425
63	80,0	54,0	60,5	66,7	540
76	93,0	55,0	72,9	79,4	980
101	127,0	71,0	97,6	109,0	2.140



ATT. FILETTATO GAS EL.
BSP MALE CONNECTION PE.
PIÈCE FILETÉE GAS
ROSCA GAS EL.

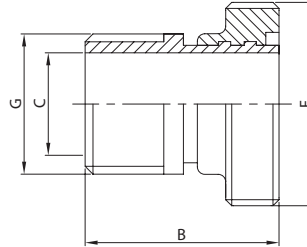
150 L



DN	B	C	D	G	gr
25	38,0	22,4	25,4	1"	70
38	45,0	35,1	38,1	1 1/2"	135
51	52,0	47,8	50,8	2"	200
63	60,0	60,5	63,5	2 1/2"	350
76	66,0	72,9	76,2	3"	540
101	75,0	97,6	101,6	4"	850

ATT. FILET. GAS + BF. MT.
BSP MALE CONN. + MP. ED.
PIÈCE FIL. GAS + NEZ FIL.
MACHO SMS + M. GAS MD.

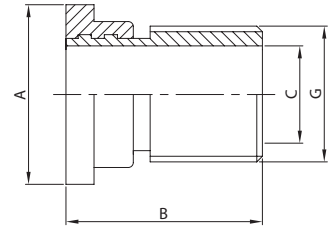
151 S



DN	B	C	F	G	gr
25	38,0	22,4	40-6	1"	140
38	45,0	35,1	60-6	1 1/2"	335
51	52,0	47,8	70-6	2"	425
63	60,0	60,5	85-6	2 1/2"	740
76	66,0	72,9	98-6	3"	1.040
101	75,0	97,6	132-6	4"	1.990

ATT. FILET. GAS + BL. MT.
BSP MALE CONN. + L. ED.
PIÈCE FIL. GAS + DOUILLE
C. SMS + M. GAS MD.

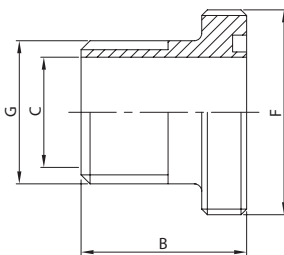
152 S



DN	A	B	C	G	gr
25	35,5	38,0	22,4	1"	115
38	55,0	45,0	35,1	1 1/2"	255
51	65,0	52,0	47,8	2"	335
63	80,0	60,0	60,5	2 1/2"	570
76	93,0	66,0	72,9	3"	850
101	127,0	75,0	97,6	4"	1.590

BOCC. FILETTATO EF. GAS
BSP MALE PART ME.
ADAPTATEUR NEZ FILETÉ
MACHO SMS MACHO GAS

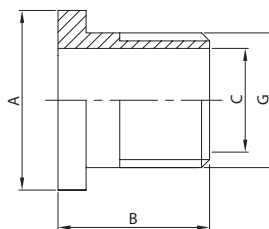
153 S



DN	B	C	F	G	gr
25	30,0	22,4	40-6	1"	140
38	42,0	35,1	60-6	1 1/2"	335
51	47,0	47,8	70-6	2"	425
63	55,0	60,5	85-6	2 1/2"	740
76	58,0	72,9	98-6	3"	1.040
101	72,0	97,6	132-6	4"	1.990

BOCC. LISCIO EF. GAS
BSP LINER ME.
ADAPTATEUR DOUILLE
CASQUILLO SMS M. GAS

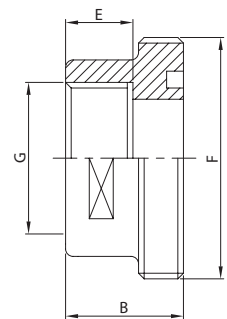
154 S



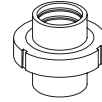
DN	A	B	C	G	gr
25	35,5	28,5	22,4	1"	115
38	55,0	29,0	35,1	1 1/2"	255
51	65,0	34,0	47,8	2"	335
63	80,0	34,0	60,5	2 1/2"	570
76	93,0	40,0	72,9	3"	850
101	127,0	41,0	97,6	4"	1.590

BOCC. FILET. D.I. FT. GAS
MALE PART I.D. T. BSP
ADAPT. NEZ FIL./FEM. GAS
MACHO SMS HEMBRA GAS

161 S

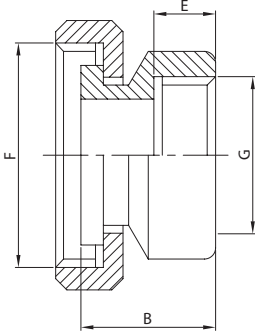


DN	B	E	F	G	gr
25	23,0	17,0	40-6	1"	100
38	32,0	19,0	60-6	1 1/2"	230
51	36,0	23,0	70-6	2"	270
63	42,0	24,0	85-6	2 1/2"	420
76	45,0	27,0	98-6	3"	540
101	50,0	30,0	132-6	4"	1.230



BL. + G. D.I. FT. GAS
L. + N. I.D. T. BSP
ADAPT. DOUILLE/FEM. GAS
C. + T. SMS H. GAS

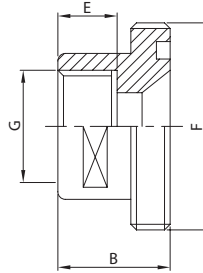
162 S



DN	B	E	F	G	gr
25	30,0	18,0	40-6	1"	200
38	33,0	18,0	60-6	1 1/2"	470
51	35,0	23,0	70-6	2"	540
63	40,0	23,0	85-6	2 1/2"	1.020
76	47,0	28,0	98-6	3"	1.370
101	54,0	28,0	132-6	4"	2.090

BOCC. FILET. D.I. FT. GAS
MALE PART I.D. T. BSP
ADAPT. NEZ FIL./FEM. GAS
M. SMS H. GAS REDUCCIÓN

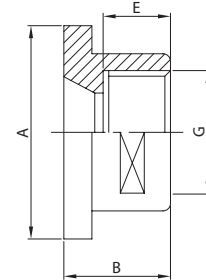
163 S



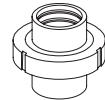
DN	B	E	F	G	gr
25	26,0	18,0	40-6	3/4"	70
38	30,0	18,0	60-6	1 1/4"	200
51	35,0	23,0	70-6	1 1/2"	225
63	39,0	23,0	85-6	2"	390
76	44,0	28,0	98-6	2 1/2"	500
101	45,0	28,0	132-6	3 1/2"	1.140

BOCC. LISCIO D.I. FT. GAS
LINER I.D. T. BSP
ADAPT. DOUILLE/FEM. GAS
C. SMS H. GAS REDUCCIÓN

164 S

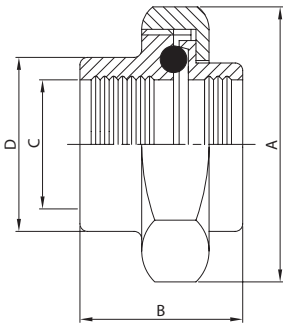


DN	A	B	E	G	gr
25	35,5	28,5	18,0	3/4"	45
38	55,0	29,0	18,0	1 1/4"	120
51	65,0	34,0	23,0	1 1/2"	135
63	80,0	34,0	23,0	2"	220
76	93,0	40,0	28,0	2 1/2"	310
101	127,0	41,0	28,0	3 1/2"	740



**RACCORDO MR.
EG. UNION
RACCORD DR.
RACOR MR.**

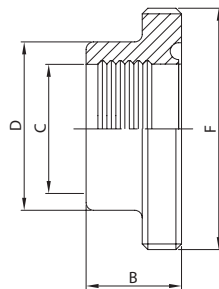
100 B



DN	A	B	C	D	gr
25	51,0	41,0	25,4	32,5	285
38	65,0	49,0	38,1	45,2	450
51	80,0	57,0	50,8	58,0	645
63	92,0	65,0	63,5	70,6	940
76	104,0	65,0	76,2	83,3	1.075
101	130,0	65,0	101,6	109,0	1.440

**BOCC. FILETTATO MR.
EG. MALE PART
NEZ FILETÉ DR.
MACHO RACOR MR.**

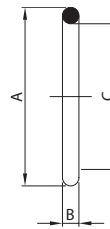
101 B



DN	B	C	D	F	gr
25	20,0	25,4	32,5	46-8	100
38	24,0	38,1	45,2	58-8	155
51	28,0	50,8	58,0	73-6	235
63	32,0	63,5	70,6	85-6	290
76	32,0	76,2	83,3	98-6	365
101	32,0	101,6	109,0	123-6	530

**GUARNIZIONE PER RACC.
SEAL RING FOR UNION
JOINT DE RACCORD
JUNTA RACOR**

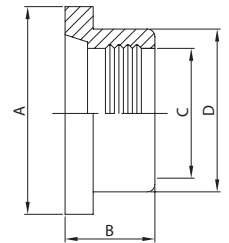
131 B



DN	A	B	C
25	39,9	6,6	26,7
38	52,6	6,6	39,4
51	65,3	6,6	52,1
63	78,0	6,6	64,8
76	90,6	6,6	77,4
101	116,1	6,6	102,9

**BOCC. LISCIO MR.
EG. LINER
DOUILLE DR.
CASQUILLO RACOR MR.**

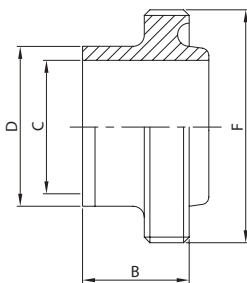
111 B



DN	A	B	C	D	gr
25	41,2	20,0	25,4	32,5	60
38	53,9	24,0	38,1	45,2	95
51	66,7	28,0	50,8	58,0	140
63	79,4	32,0	63,5	70,6	200
76	92,0	32,0	76,2	83,3	240
101	117,0	32,0	101,6	109,0	360

**BOCC. FILETTATO SR.
WG. MALE PART
NEZ FILETÉ SR. LONG
MACHO RACOR SR.**

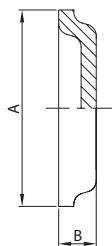
102 B



DN	B	C	D	F	gr
25	31,7	22,1	25,4	46-8	115
38	31,7	34,8	38,1	58-8	160
51	31,7	47,5	50,8	73-6	240
63	31,7	60,2	63,5	85-6	280
76	31,7	72,9	76,2	98-6	350
101	31,7	97,6	101,6	123-6	540

**TAPPO LISCIO STAMPATO
BLANK PRESSED LINER
OBTURATEUR ESTAMPÉ
C. R. CIEGO ESTAMPADO**

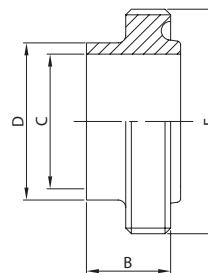
118 B



DN	A	B	gr
25	41,2	7,5	25
38	53,9	7,5	40
51	66,7	7,5	60
63	79,4	8,7	90
76	92,0	8,7	115
101	117,0	8,7	225

**BOCC. FILETT. CORTO SR.
WG. SHORT MALE PART
NEZ FILETÉ SR. COURT
MACHO R. CORTO SR.**

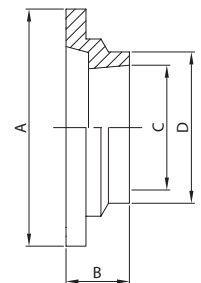
103 B



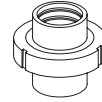
DN	B	C	D	F	gr
25	23,7	22,1	25,4	46-8	115
38	23,7	34,8	38,1	58-8	165
51	23,7	47,5	50,8	73-6	220
63	23,7	60,2	63,5	85-6	295
76	23,7	72,9	76,2	98-6	355
101	23,7	97,6	101,6	123-6	500

**BOCC. LISCIO CORTO SR.
WG. SHORT LINER
DOUILLE SR. COURTE
CASQUILLO R. CORTO SR.**

113 B



DN	A	B	C	D	gr
25	41,2	12,0	22,1	25,4	35
38	53,9	12,0	34,8	38,1	50
51	66,7	12,0	47,5	50,8	60
63	79,4	12,0	60,2	63,5	75
76	92,0	12,0	72,9	76,2	100
101	117,0	12,0	97,6	101,6	155



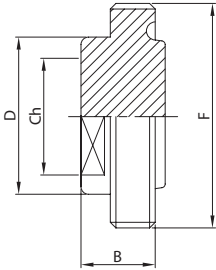
**TAPPO FILETTATO
BLANK MALE
OBTURATEUR FILETÉ
MACHO R. CIEGO**

**TAPPO LISCIO
BLANK LINER
OBTURATEUR
CASQUILLO R. CIEGO**

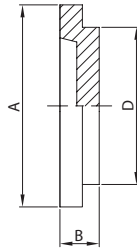
**RIDUZIONE FILETTATA MR.
EG. MALE REDUCER
NEZ FILETÉ RÉDUIT DR.
MACHO R. REDUCCIÓN MR.**

**RIDUZIONE LISCIA MR.
EG. LINER REDUCER
DOUILLE RÉDUITE DR.
CASQUILLO R. REDUC. MR.**

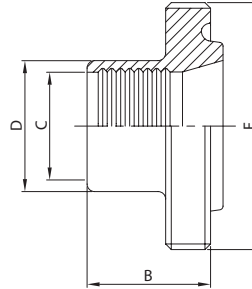
104 B



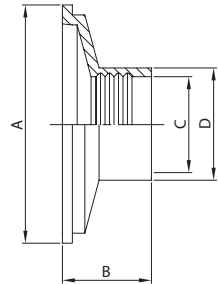
114 B



105 B



115 B



DN	B	Ch	D	F	gr
25	24,0	30,0	38,0	46-8	50
38	24,0	40,0	50,0	58-8	80
51	24,0	55,0	65,5	73-6	130
63	24,0	65,0	76,0	85-6	190
76	24,0	79,5	89,0	98-6	250
101	24,0	104,0	114,0	123-6	390

DN	A	B	D	gr
25	41,2	8,7	32,5	40
38	53,9	8,7	45,2	70
51	66,7	8,7	58,0	110
63	79,4	8,7	70,6	160
76	92,0	8,7	83,3	210
101	117,2	8,7	109,0	330

DN	B	C	D	F	gr
38/25	30,3	25,4	32,5	58-8	190
51/25	30,3	25,4	32,5	73-6	280
51/38	35,3	38,1	45,2	73-6	330
63/38	35,3	38,1	45,2	85-6	350
63/51	35,3	50,8	58,0	85-6	410
76/38	40,3	38,1	45,2	98-6	440
76/51	40,3	50,8	58,0	98-6	510
76/63	40,3	63,5	70,6	98-6	580
101/63	40,3	63,5	70,6	123-6	640
101/76	40,3	76,2	83,3	123-6	740

DN	A	B	C	D	gr
38/25	53,9	28,0	25,4	32,5	150
51/25	66,7	30,0	25,4	32,5	170
51/38	66,7	30,0	38,1	45,2	180
63/38	79,4	35,0	38,1	45,2	210
63/51	79,4	35,0	50,8	58,0	220
76/38	92,0	39,0	38,1	45,2	300
76/51	92,0	39,0	50,8	58,0	310
76/63	92,0	39,0	63,5	70,6	350
101/63	117,2	39,0	63,5	70,6	400
101/76	117,2	39,0	76,2	83,3	430

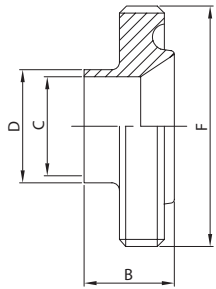
**RIDUZIONE FILETTATA SR.
WG. MALE REDUCER
NEZ FILETÉ RÉDUIT SR.
MACHO R. REDUCCIÓN SR.**

**RIDUZIONE LISCIA SR.
WG. LINER REDUCER
DOUILLE RÉDUITE SR.
CASQUILLO R. REDUC. SR.**

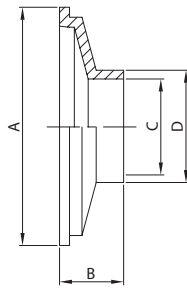
**GIRELLA ESAGONALE
HEX NUT
ÉCROU HEXAGONAL
TUERCA EXAGONAL**

**GIRELLA CIECA + CAT.
ROUND NUT + CHAIN
ÉCROU BOUCHON + CH.
TUERCA CIEGA + CAD.**

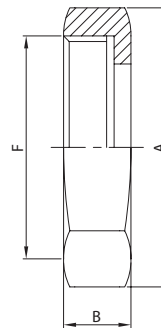
106 B



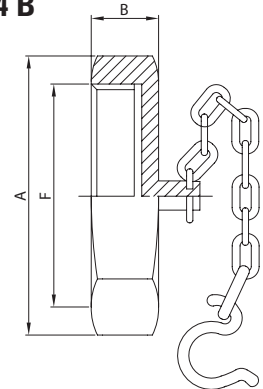
116 B



121 B



124 B

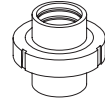


DN	B	C	D	F	gr
38/25	33,0	22,1	25,4	58-8	140
51/25	35,0	22,1	25,4	73-6	290
51/38	35,0	34,8	38,1	73-6	330
63/38	40,0	34,8	38,1	85-6	340
63/51	40,0	47,5	50,8	85-6	390
76/38	44,0	34,8	38,1	98-6	420
76/51	44,0	47,5	50,8	98-6	490
76/63	44,0	60,2	63,5	98-6	560
101/63	44,0	60,2	63,5	123-6	650
101/76	44,0	72,9	76,2	123-6	760

DN	A	B	C	D	gr
38/25	53,9	20,0	22,1	25,4	150
51/25	66,7	20,0	22,1	25,4	170
51/38	66,7	20,0	34,8	38,1	180
63/38	79,4	20,0	34,8	38,1	210
63/51	79,4	20,0	47,5	50,8	220
76/38	92,0	20,0	34,8	38,1	300
76/51	92,0	20,0	47,5	50,8	310
76/63	92,0	20,0	60,2	63,5	350
101/63	117,2	20,0	60,2	63,5	400
101/76	117,2	20,0	72,9	76,2	430

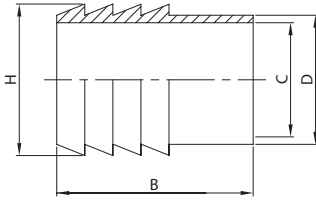
DN	A	B	F	gr
25	51,0	22,2	46-8	125
38	65,0	22,2	58-8	205
51	80,0	22,2	73-6	270
63	92,0	22,2	85-6	450
76	104,0	22,2	98-6	470
101	130,0	22,2	123-6	550

DN	A	B	F	gr
25	51,0	22,2	46-8	230
38	65,0	22,2	58-8	320
51	80,0	22,2	73-6	440
63	92,0	22,2	85-6	600
76	104,0	22,2	98-6	720
101	130,0	22,2	123-6	920



ATT. PORTAGOMMA EL.
HOSE CONNECTION PE.
MANCHON À LIGATURER
MANGUITO MANGUERA EL.

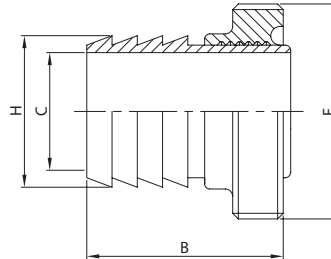
140 L



DN	B	C	D	H	gr
25	49,0	22,1	25,4	28,6	100
38	58,0	34,8	38,1	41,3	200
51	67,0	47,5	50,8	54,0	290
63	81,0	60,2	63,5	66,7	320
76	81,0	72,9	76,2	79,4	670
101	95,0	97,6	101,6	109,0	1.400

ATT. PORTAG. + BF. MT.
HOSE CONNECTION + MP ED.
NEZ FILETÉ À LIGATURER
M. M. MACHO MD.

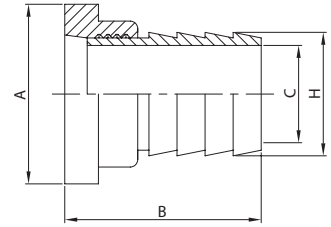
141 B



DN	B	C	F	H	gr
25	44,3	22,1	46-8	28,6	200
38	53,3	34,8	58-8	41,3	355
51	62,3	47,5	73-6	54,0	525
63	76,3	60,2	85-6	66,7	610
76	76,3	72,9	98-6	79,4	1.035
101	90,3	97,6	123-6	109,0	1.930

ATT. PORTAG. + BL. MT.
HOSE CONNECTION + L. ED.
DOUILLE À LIGATURER
M. M. CASQUILLO MD.

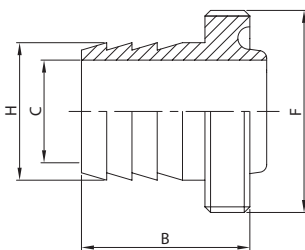
142 B



DN	A	B	C	H	gr
25	41,2	54,5	22,1	28,6	160
38	53,9	63,5	34,8	41,3	295
51	66,7	72,5	47,5	54,0	430
63	79,4	86,5	60,2	66,7	520
76	92,0	86,5	72,9	79,4	910
101	117,0	100,5	97,6	109,0	1.760

PORTAGOMMA EF.
HOSE CONNECTION ME.
PORTE C. NEZ FILETÉ
M. M. MACHO SR.

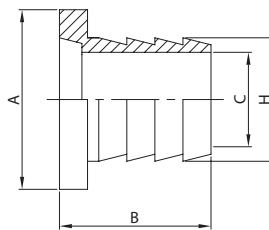
143 B



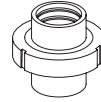
DN	B	C	F	H	gr
25	49,0	22,1	46-8	28,6	200
38	54,0	34,8	58-8	41,3	355
51	59,0	47,5	73-6	54,0	525
63	69,0	60,2	85-6	66,7	610
76	69,0	72,9	98-6	79,4	1.035
101	84,0	97,6	123-6	109,0	1.930

PORTAGOMMA EL.
HOSE CONNECTION PE.
PORTE C. DOUILLE
M. M. CASQUILLO SR.

144 B

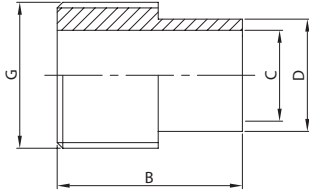


DN	A	B	C	H	gr
25	41,2	40,0	22,1	28,6	160
38	53,9	45,0	34,8	41,3	295
51	66,7	50,0	47,5	54,0	430
63	79,4	60,0	60,2	66,7	520
76	92,0	60,0	72,9	79,4	910
101	117,0	75,0	97,6	109,0	1.760



ATT. FILETTATO GAS EL.
BSP MALE CONNECTION PE.
PIÈCE FILETÉE GAS
ROSCA GAS EL.

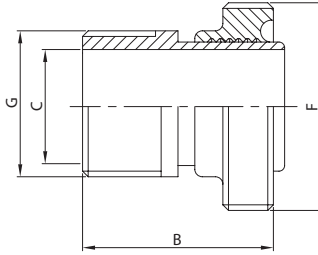
150 L



DN	B	C	D	G	gr
25	38,0	22,1	25,4	1"	70
38	45,0	34,8	38,1	1 1/2"	135
51	52,0	47,5	50,8	2"	200
63	60,0	60,2	63,5	2 1/2"	350
76	66,0	72,9	76,2	3"	540
101	75,0	97,6	101,6	4"	850

ATT. FILET. GAS + BF. MT.
BSP MALE CONN. + MP. ED.
PIÈCE FIL. GAS + NEZ FIL.
MACHO BS + M. GAS MD.

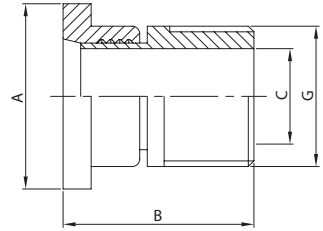
151 B



DN	B	C	F	G	gr
25	33,3	22,1	46-8	1"	160
38	40,3	34,8	58-8	1 1/2"	290
51	47,3	47,5	73-6	2"	435
63	55,3	60,2	85-6	2 1/2"	640
76	61,3	72,9	98-6	3"	905
101	70,3	97,6	123-6	4"	1.380

ATT. FILET. GAS + BL. MT.
BSP MALE CONN. + L. ED.
PIÈCE FIL. GAS + DOUILLE
C. BS + M. GAS MD.

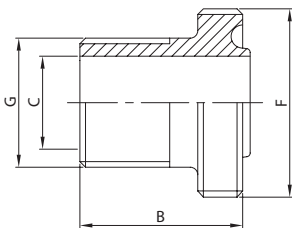
152 B



DN	A	B	C	G	gr
25	41,2	43,5	22,1	1"	130
38	53,9	50,5	34,8	1 1/2"	220
51	66,7	57,5	47,5	2"	340
63	79,4	65,5	60,2	2 1/2"	550
76	92,0	71,5	72,9	3"	780
101	117,0	80,5	97,6	4"	1.210

BOCC. FILETTATO EF. GAS
BSP MALE PART ME.
ADAPTATEUR NEZ FILETÉ
MACHO BS MACHO GAS

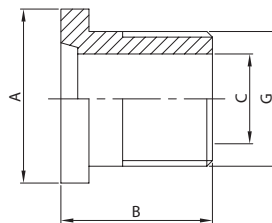
153 B



DN	B	C	F	G	gr
25	46,3	22,1	46-8	1"	160
38	46,3	34,8	58-8	1 1/2"	290
51	46,3	47,5	73-6	2"	435
63	46,3	60,2	85-6	2 1/2"	640
76	46,3	72,9	98-6	3"	905
101	46,3	97,6	123-6	4"	1.380

BOCC. LISCIQ EF. GAS
BSP LINER ME.
ADAPTATEUR DOUILLE
CASQUILLO BS M. GAS

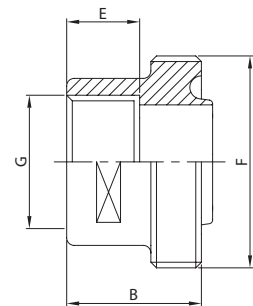
154 B



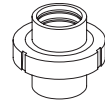
DN	A	B	C	G	gr
25	41,2	38,0	22,1	1"	130
38	53,9	38,0	34,8	1 1/2"	220
51	66,7	38,0	47,5	2"	340
63	79,4	38,0	60,2	2 1/2"	550
76	92,0	40,0	72,9	3"	780
101	117,0	40,0	97,6	4"	1.210

BOCC. FILET. D.I. FT. GAS
MALE PART I.D. T. BSP
ADAPT. NEZ FIL./FEM. GAS
MACHO BS HEMBRA GAS

161 B

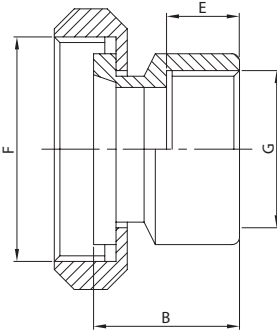


DN	B	E	F	G	gr
25	33,3	20,0	46-8	1"	100
38	36,3	22,0	58-8	1 1/2"	155
51	39,3	24,0	73-6	2"	235
63	39,3	26,0	85-6	2 1/2"	290
76	39,3	26,0	98-6	3"	365
101	39,3	26,0	123-6	4"	530



BL. + G. D.I. FT. GAS
L. + N. I.D. T. BSP
ADAPT. DOUILLE/FEM. GAS
C. + T. BS H. GAS

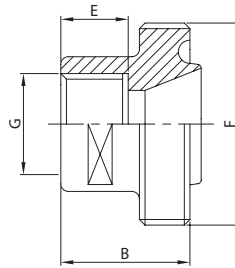
162 B



DN	B	E	F	G	gr
25	30,0	18,0	46-8	1"	230
38	34,0	18,0	58-8	1 1/2"	370
51	38,0	23,0	73-6	2"	470
63	42,0	23,0	85-6	2 1/2"	870
76	45,0	25,0	98-6	3"	1.060
101	45,0	25,0	123-6	4"	1.260

BOCC. FILET. D.I. FT. GAS
MALE PART I.D. T. BSP
ADAPT. NEZ FIL./FEM. GAS
M. BS H. GAS REDUCCIÓN

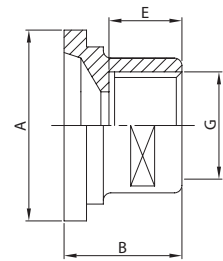
163 B



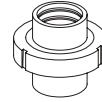
DN	B	E	F	G	gr
25	25,0	15,0	46-8	3/4"	120
38	29,0	15,0	58-8	1 1/4"	190
51	33,0	20,0	73-6	1 1/2"	280
63	37,0	20,0	85-6	2"	350
76	37,0	25,0	98-6	2 1/2"	440
101	37,0	25,0	123-6	3 1/2"	640

BOCC. LISCIO D.I. FT. GAS
LINER I.D. T. BSP
ADAPT. DOUILLE/FEM. GAS
C. BS H. GAS REDUCCIÓN

164 B



DN	A	B	E	G	gr
25	12,0	20,0	46-8	3/4"	60
38	15,0	24,0	58-8	1 1/4"	95
51	15,0	28,0	73-6	1 1/2"	140
63	20,0	32,0	85-6	2"	200
76	20,0	32,0	98-6	2 1/2"	240
101	20,0	32,0	123-6	3 1/2"	360



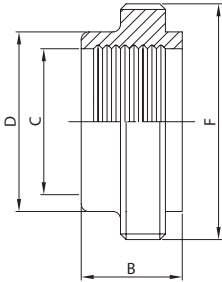
RACCORDO MR.
EG. UNION
RACCORD DR.
RACOR MR.

BOCC. FILETTATO MR.
EG. MALE PART
NEZ FILETÉ DR.
MACHO RACOR MR.

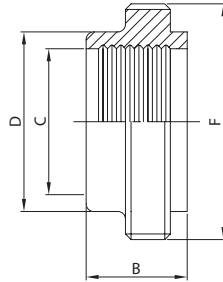
GUARNIZIONE PER RACC.
SEAL RING FOR UNION
JOINT DE RACCORD
JUNTA RACOR

BOCC. LISCIO MR.
EG. LINER
DOUILLE DR.
CASQUILLO RACOR MR.

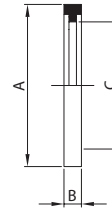
100 I



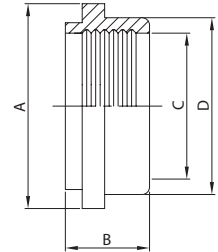
101 I



131 I



111 I



DN	A	B	C	D	gr
25	46,0	40,0	25,4	29,0	265
38	60,0	43,0	38,1	42,5	425
51	75,0	48,0	50,8	56,0	610
63	90,0	58,0	63,5	69,7	935
76	105,0	63,0	76,2	82,3	1.150
101	134,0	63,0	101,6	108,4	1.990

DN	B	C	D	F	gr
25	17,0	25,4	29,0	37-8	50
38	20,0	38,1	42,5	50-8	100
51	20,0	50,8	56,0	64-8	120
63	25,0	63,5	69,7	77-8	195
76	30,0	76,2	82,3	91-8	260
101	30,0	101,6	108,4	118-8	520

DN	A	B	C
25	32,5	7,0	23,0
38	46,0	7,0	36,0
51	59,5	7,0	49,0
63	73,0	7,0	60,7
76	86,5	7,0	73,2
101	112,5	7,0	98,0

DN	A	B	C	D	gr
25	33,8	20,0	25,4	29,0	30
38	47,0	20,0	38,1	42,5	50
51	60,5	25,0	50,8	56,0	90
63	74,0	30,0	63,5	69,7	160
76	87,5	30,0	76,2	82,3	190
101	114,1	30,0	101,6	108,4	370

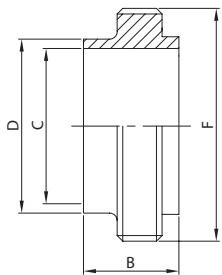
BOCC. FILETTATO SR.
WG. MALE PART
NEZ FILETÉ SR. LONG
MACHO RACOR SR.

BOCC. LISCIO SR.
WG. LINER
DOUILLE SR. LONGUE
CASQUILLO RACOR SR.

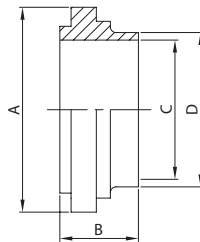
TAPPO FILETTATO
BLANK MALE
OBTURATEUR FILETÉ
MACHO R. CIEGO

TAPPO LISCIO
BLANK LINER
OBTURATEUR
CASQUILLO R. CIEGO

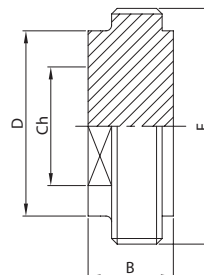
102 I



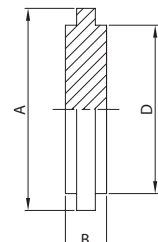
112 I



104 I



114 I

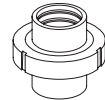


DN	B	C	D	F	gr
25	21,5	22,1	25,4	37-8	70
38	21,5	34,8	38,1	50-8	110
51	21,5	47,5	50,8	64-8	150
63	21,5	60,2	63,5	77-8	210
76	21,5	72,9	76,2	91-8	270
101	21,5	97,6	101,6	118-8	420

DN	A	B	C	D	gr
25	33,8	21,5	22,1	25,4	38
38	47,0	21,5	34,8	38,1	60
51	60,5	21,5	47,5	50,8	85
63	74,0	21,5	60,2	63,5	130
76	87,5	21,5	72,9	76,2	150
101	114,1	21,5	97,6	101,6	330

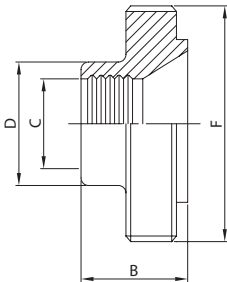
DN	B	Ch	D	F	gr
25	20,0	24,0	29,2	37-8	170
38	20,0	36,0	42,7	50-8	300
51	20,0	48,0	56,2	64-8	500
63	20,0	60,0	69,9	77-8	732
76	20,0	70,0	82,6	91-8	1.020
101	20,0	90,0	108,7	118-8	1.750

DN	A	B	D	gr
25	33,8	10,5	29,2	60
38	47,0	10,5	42,7	130
51	60,5	10,5	56,2	220
63	74,0	10,5	69,9	330
76	87,5	10,5	82,6	350
101	114,1	10,5	108,7	830



**RIDUZIONE FILETTATA MR.
EG. MALE REDUCER
NEZ FILETÉ RÉDUIT DR.
MACHO R. REDUCCIÓN MR.**

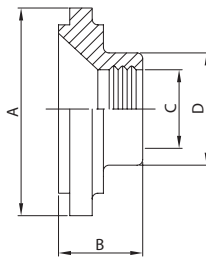
105 I



DN	B	C	D	F	gr
38/25	25,0	25,4	29,2	50-8	120
51/25	25,0	25,4	29,2	64-8	140
51/38	28,0	38,1	42,7	64-8	160
63/38	30,0	38,1	42,7	77-8	230
63/51	30,0	50,8	56,2	77-8	270
76/38	30,0	38,1	42,7	91-8	310
76/51	35,0	50,8	56,2	91-8	360
76/63	35,0	63,5	69,9	91-8	410
101/63	35,0	63,5	69,9	118-8	620
101/76	35,0	76,2	82,6	118-8	730

**RIDUZIONE LISCIA MR.
EG. LINER REDUCER
DOUILLE RÉDUITE DR.
CASQUILLO R. REDUC. MR.**

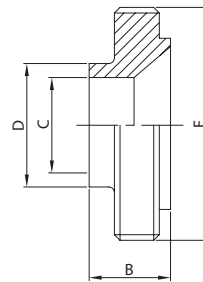
115 I



DN	A	B	C	D	gr
38/25	47,0	25,0	25,4	29,0	110
51/25	60,5	25,0	25,4	29,0	185
51/38	60,5	28,0	38,1	42,5	150
63/38	74,0	30,0	38,1	42,5	230
63/51	74,0	30,0	50,8	56,0	205
76/38	87,5	30,0	38,1	42,5	390
76/51	87,5	35,0	50,8	56,0	375
76/63	87,5	35,0	63,5	69,7	320
101/63	114,1	35,0	63,5	69,7	570
101/76	114,1	35,0	76,2	82,3	540

**RIDUZIONE FILETTATA SR.
WG. MALE REDUCER
NEZ FILETÉ RÉDUIT DR.
MACHO R. REDUCCIÓN SR.**

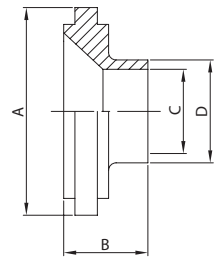
106 I



DN	B	C	D	F	gr
38/25	25,0	22,1	25,4	50-8	130
51/25	25,0	22,1	25,4	64-8	180
51/38	25,0	34,8	38,1	64-8	210
63/38	25,0	34,8	38,1	77-8	250
63/51	25,0	47,5	50,8	77-8	290
76/38	25,0	34,8	38,1	91-8	320
76/51	25,0	47,5	50,8	91-8	380
76/63	25,0	60,2	63,5	91-8	430
101/63	25,0	60,2	63,5	118-8	500
101/76	25,0	72,9	76,2	118-8	590

**RIDUZIONE LISCIA SR.
WG. LINER REDUCER
DOUILLE RÉDUITE SR.
CASQUILLO R. REDUC. SR.**

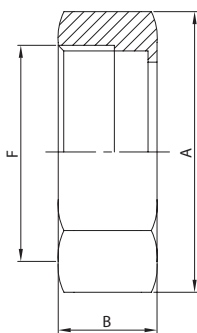
116 I



DN	A	B	C	D	gr
38/25	47,0	18,0	22,1	25,4	95
51/25	60,5	18,0	22,1	25,4	165
51/38	60,5	18,0	34,8	38,1	150
63/38	74,0	18,0	34,8	38,1	235
63/51	74,0	18,0	47,5	50,8	190
76/38	87,5	18,0	34,8	38,1	345
76/51	87,5	18,0	47,5	50,8	305
76/63	87,5	18,0	60,2	63,5	250
101/63	114,1	18,0	60,2	63,5	530
101/76	114,1	18,0	72,9	76,2	480

**GIRELLA ESAGONALE
HEX NUT
ÉCROU HEXAGONAL
TUERCA EXAGONAL**

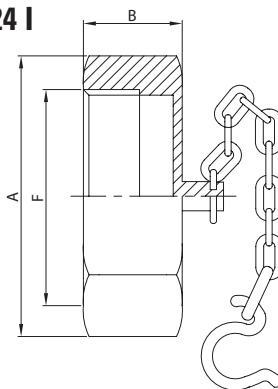
121 I



DN	A	B	F	gr
25	46,0	30,0	37-8	185
38	60,0	30,0	50-8	275
51	75,0	30,0	64-8	400
63	90,0	30,0	77-8	580
76	105,0	30,0	91-8	700
101	134,0	30,0	118-8	1.100

**GIRELLA CIECA + CAT.
ROUND NUT + CHAIN
ÉCROU BOUCHON + CH.
TUERCA CIEGA + CAD.**

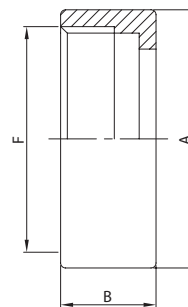
124 I



DN	A	B	F	gr
25	46,0	30,0	37-8	245
38	60,0	30,0	50-8	405
51	75,0	30,0	64-8	620
63	90,0	30,0	77-8	910
76	105,0	30,0	91-8	1.050
101	134,0	30,0	118-8	1.930

**GIRELLA TONDA LISCIA
ROUND NUT
ÉCROU ROND LISSE
TUERCA REDONDA LISA**

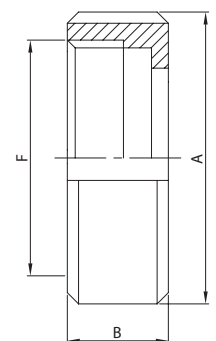
122 I



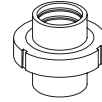
DN	A	B	F	gr
25	44,5	30,0	37-8	130
38	57,0	30,0	50-8	140
51	70,0	30,0	64-8	180
63	85,5	30,0	77-8	290
76	101,5	30,0	91-8	450
101	129,0	30,0	118-8	900

**GIR. TONDA CON TACCHE
NOTCHES ROUND NUT
ÉCROU À CRANS
TUERCA REDONDA**

123 I

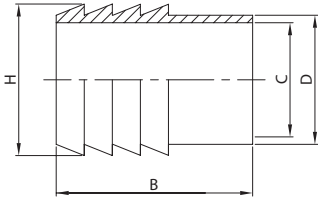


DN	A	B	F	gr
25	48,0	30,0	37-8	165
38	64,0	30,0	50-8	255
51	77,0	30,0	64-8	310
63	91,0	30,0	77-8	360
76	106,0	30,0	91-8	500
101	135,0	30,0	118-8	900



ATT. PORTAGOMMA EL.
HOSE CONNECTION PE.
MANCHON À LIGATURER
MANGUITO MANGUERA EL.

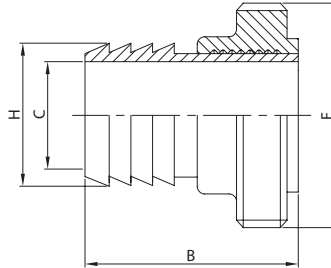
140 L



DN	B	C	D	H	gr
25	49,0	22,1	25,4	28,6	100
38	58,0	34,8	38,1	41,3	200
51	67,0	47,5	50,8	54,0	290
63	81,0	60,2	63,5	66,7	320
76	81,0	72,9	76,2	79,4	670
101	95,0	97,6	101,6	109,0	1.400

ATT. PORTAG. + BF. MT.
HOSE CONNECTION + MP ED.
NEZ FILETÉ À LIGATURER
M. M. MACHO MD.

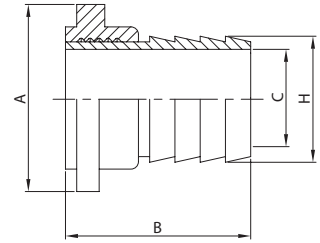
141 I



DN	B	C	F	H	gr
25	49,0	22,1	37-8	28,6	150
38	58,0	34,8	50-8	41,3	300
51	67,0	47,5	64-8	54,0	410
63	81,0	60,2	77-8	66,7	515
76	81,0	72,9	91-8	79,4	930
101	95,0	97,6	118-8	109,0	1.920

ATT. PORTAG. + BL. MT.
HOSE CONNECTION + L. ED.
DOUILLE À LIGATURER
M. M. CASQUILLO MD.

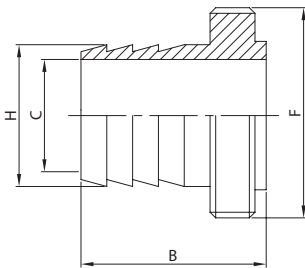
142 I



DN	A	B	C	H	gr
25	33,8	49,0	22,1	28,6	130
38	47,0	58,0	34,8	41,3	250
51	60,5	67,0	47,5	54,0	380
63	74,0	81,0	60,2	66,7	480
76	87,5	81,0	72,9	79,4	860
101	114,1	95,0	97,6	109,0	1.770

PORTAGOMMA EF.
HOSE CONNECTION ME.
PORTE C. NEZ FILETÉ
M. M. MACHO SR.

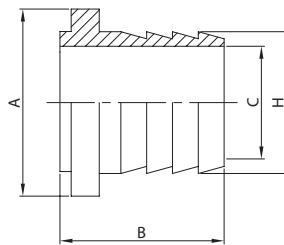
143 I



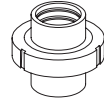
DN	B	C	F	H	gr
25	45,0	22,1	37-8	28,6	150
38	50,0	34,8	50-8	41,3	300
51	55,0	47,5	64-8	54,0	410
63	65,0	60,2	77-8	66,7	515
76	65,0	72,9	91-8	79,4	930
101	80,0	97,6	118-8	109,0	1.920

PORTAGOMMA EL.
HOSE CONNECTION PE.
PORTE C. DOUILLE
M. M. CASQUILLO SR.

144 I

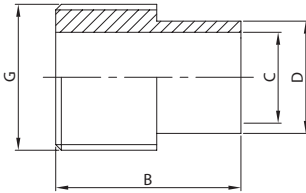


DN	A	B	C	H	gr
25	33,8	40,0	22,1	28,6	130
38	47,0	45,0	34,8	41,3	250
51	60,5	50,0	47,5	54,0	380
63	75,0	60,0	60,2	66,7	480
76	87,5	70,0	72,9	79,4	860
101	114,1	75,0	97,6	109,0	1.770



ATT. FILETTATO GAS EL.
BSP MALE CONNECTION PE.
PIÈCE FILETÉE GAS
ROSCA GAS EL.

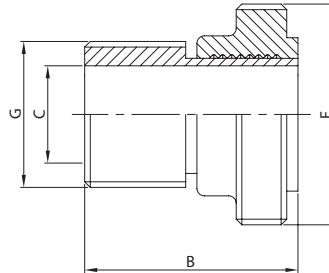
150 L



DN	B	C	D	G	gr
25	38,0	22,1	25,4	1"	70
38	45,0	34,8	38,1	1 1/2"	135
51	52,0	47,5	50,8	2"	200
63	60,0	60,2	63,5	2 1/2"	350
76	66,0	72,9	76,2	3"	540
101	75,0	97,6	101,6	4"	850

ATT. FILET. GAS + BF. MT.
BSP MALE CONN. + MP. ED.
PIÈCE FIL. GAS + NEZ FIL.
MACHO SMS + M. GAS MD.

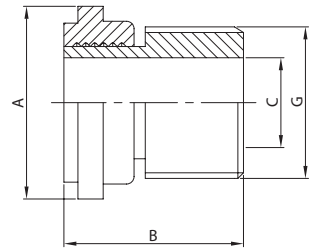
151 I



DN	B	C	F	G	gr
25	38,0	22,1	37-8	1"	120
38	45,0	34,8	50-8	1 1/2"	235
51	52,0	47,5	64-8	2"	320
63	60,0	60,2	77-8	2 1/2"	515
76	66,0	72,9	91-8	3"	800
101	75,0	97,6	118-8	4"	1.370

ATT. FILET. GAS + BL. MT.
BSP MALE CONN. + L. ED.
PIÈCE FIL. GAS + DOUILLE
C. FIL + M. GAS MD.

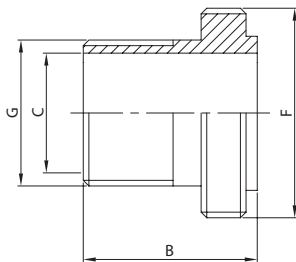
152 I



DN	A	B	C	G	gr
25	33,8	38,0	22,1	1"	100
38	47,0	45,0	34,8	1 1/2"	185
51	60,5	52,0	47,5	2"	290
63	74,0	60,0	60,2	2 1/2"	510
76	87,5	66,0	72,9	3"	730
101	114,1	75,0	97,6	4"	1.220

BOCC. FILETTATO EF. GAS
BSP MALE PART ME.
ADAPTATEUR NEZ FILETÉ
MACHO FIL MACHO GAS

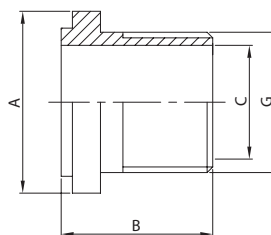
153 I



DN	B	C	F	G	gr
25	51,0	22,1	37-8	1"	120
38	51,0	34,8	50-8	1 1/2"	235
51	51,0	47,5	64-8	2"	320
63	51,0	60,2	77-8	2 1/2"	515
76	51,0	72,9	91-8	3"	800
101	51,0	97,6	118-8	4"	1.370

BOCC. LISCIO EF. GAS
BSP LINER ME.
ADAPTATEUR DOUILLE
CASQUILLO FIL M. GAS

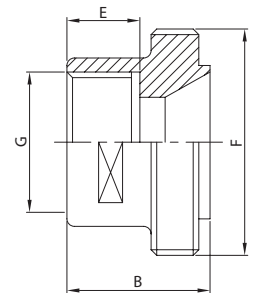
154 I



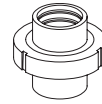
DN	A	B	C	G	gr
25	33,8	38,0	22,1	1"	100
38	47,0	38,0	34,8	1 1/2"	185
51	60,5	38,0	47,5	2"	210
63	74,0	38,0	60,2	2 1/2"	510
76	77,5	40,0	72,9	3"	730
101	114,1	40,0	97,6	4"	1.220

BOCC. FILET. D.I. FT. GAS
MALE PART I.D. T. BSP
ADAPT. NEZ FIL./FEM. GAS
MACHO FIL HEMBRA GAS

161 I

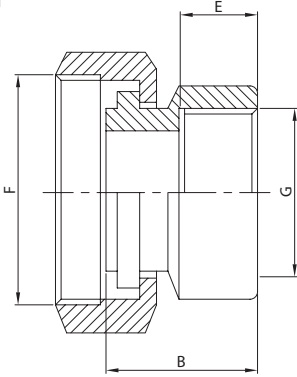


DN	B	E	F	G	gr
25	34,0	20,0	37-8	1"	50
38	37,0	20,0	50-8	1 1/2"	100
51	40,0	25,0	64-8	2"	120
63	44,0	25,0	77-8	2 1/2"	195
76	50,0	30,0	91-8	3"	260
101	60,0	30,0	118-8	4"	520



BL. + G. D.I. FT. GAS
L. + N. I.D. T. BSP
ADAPT. DOUILLE/FEM. GAS
C. + T. FIL H. GAS

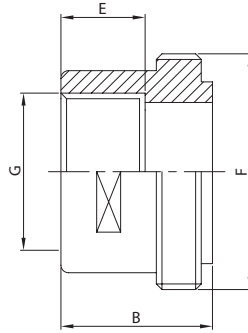
162 I



DN	B	E	F	G	gr
25	34,0	20,0	37-8	1"	290
38	37,0	20,0	50-8	1 1/2"	450
51	40,0	25,0	64-8	2"	620
63	44,0	25,0	77-8	2 1/2"	1.060
76	50,0	30,0	91-8	3"	1.340
101	60,0	30,0	118-8	4"	1.980

BOCC. FILET. D.I. FT. GAS
MALE PART I.D. T. BSP
ADAPT. NEZ FIL./FEM. GAS
M. FIL H. GAS REDUCCIÓN

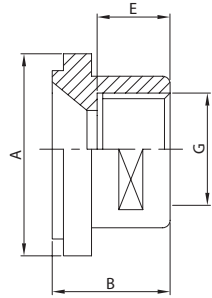
163 I



DN	B	E	F	G	gr
25	34,0	20,0	37-8	3/4"	60
38	37,0	20,0	50-8	1 1/4"	90
51	40,0	25,0	64-8	1 1/2"	160
63	44,0	25,0	77-8	2"	290
76	50,0	30,0	91-8	2 1/2"	350
101	60,0	30,0	118-8	3 1/2"	680

BOCC. LISCIO D.I. FT. GAS
LINER I.D. T. BSP
ADAPT. DOUILLE/FEM. GAS
C. FIL H. GAS REDUCCIÓN

164 I



DN	A	B	E	G	gr
25	33,8	25,0	15,0	3/4"	30
38	47,0	25,0	15,0	1 1/4"	50
51	60,5	30,0	20,0	1 1/2"	90
63	74,0	35,0	25,0	2"	160
76	87,5	35,0	25,0	2 1/2"	190
101	114,1	35,0	25,0	3 1/2"	370